



COMPANY PORTFOLIO

BUILDINGS AND INFRASTRUCTURE

Highlighting Company Engineering Disciplines, Capabilities,
Our Projects and Previous Experience

We provide Consultant
&Engineering Services primarily for
the infrastructure, buildings and Oil & Gas
projects located in Egypt and elsewhere in
The MENA Region.

We provide Consultant
&Engineering Services primarily for
the infrastructure, buildings and Oil & Gas
projects located in Egypt and elsewhere in
The MENA Region.

CO. PORTFOLIO

Table of Content

Diar Consulting Group is a Consultant Group Established in January 2009 to provide Consultant & Engineering Services primarily for the infrastructure, buildings, and Oil & Gas projects located in Egypt and elsewhere in the Middle East and Africa.



Our Mission, Vision, Values
Why Diar
Our Team Culture



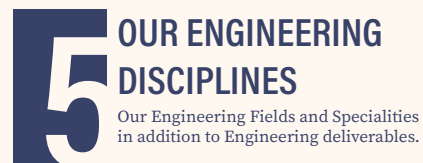
Integrity, Accountability, Diligence,
Preseverance, and Discipline



A Board od Directors with over 40
years of experience in Different
engineering fields



It shows the internal structure of Our
Organization.



Our Engineering Fields and Specialities
in addition to Engineering deliverables.



Building, infrastructure,
Industrial, and Oil & Gas
and PMC Projects



Diar Old projects in Egypt
and the MenA Region.



Our Partnership with Bechtel



Our Certifications and Clients
Appreciation



Diar Offices Map in Egypt and the
MENA Region



Social Media Accounts, Website
and Our Contacts

About Us

Diar Consulting Group is a Consultant Group Established in January 2009 to provide Consultant & Engineering Services primarily for the infrastructure, buildings, and Oil & Gas projects located in Egypt and elsewhere in the Middle East and Africa.



While maintaining a Relentless focus on safety and an uncompromising standard of quality. Regardless of a project's size or location, DIAR delivers Consistent, superior results, which our customers have come to expect. We are confident in our capabilities, our talented workforce, and the Long-term Growth of the markets we serve.

Today we continue our legacy of excellence with a unique business model that offers a more complete supply chain solution to our customers.

“

With extensive capabilities that serve our diverse end markets, we can work on a project from concept to completion and beyond.

Regardless of a project's size or location, DIAR deliver consistent, superior results, which our customers have come to expect.

”



Our Mission

To provide engineering and consulting services (design & supervision) for the infrastructure (Civil works ,architecture and landscape), buildings and Oil & Gas projects Serving our clients locally and Regionally

Our clients can depend on our ability to design any project from feasibility, preliminary through for construction, Tender package stages.

Our Vision



Our vision is to be one of the key professional firms in the fields of Engineering & consulting services in MENA Region for the infrastructure, buildings and Oil & Gas sectors.



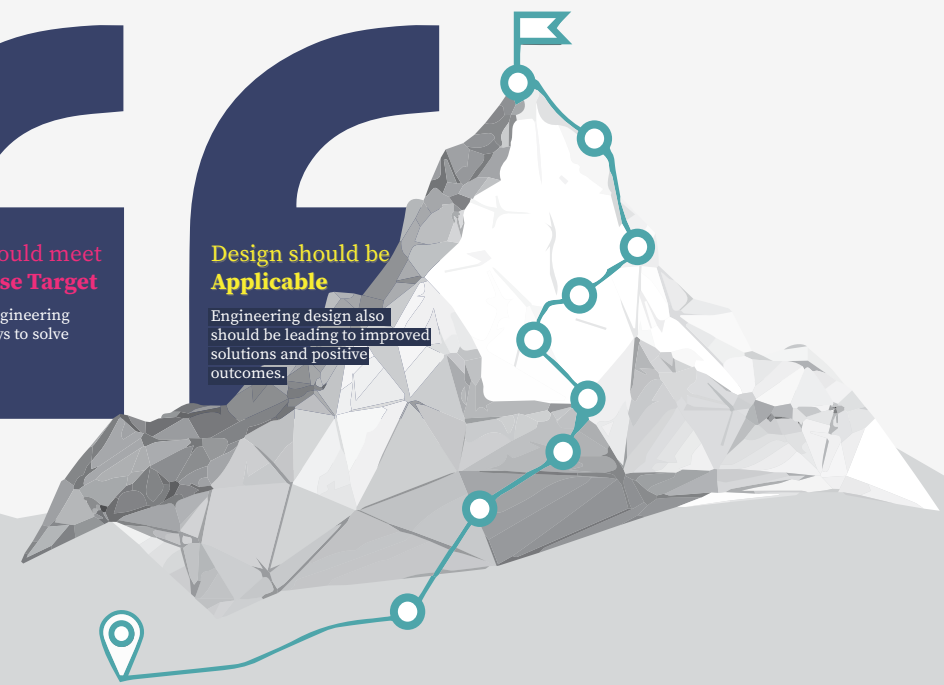
Our Design Principles

E Design should fit the Client **Budget**.
Considering how we want to use the available resources.

E Design should meet **Client Requirement**
allow the project team to explore variable options, and recommend the best option which suite and deliver the Client Requirements.

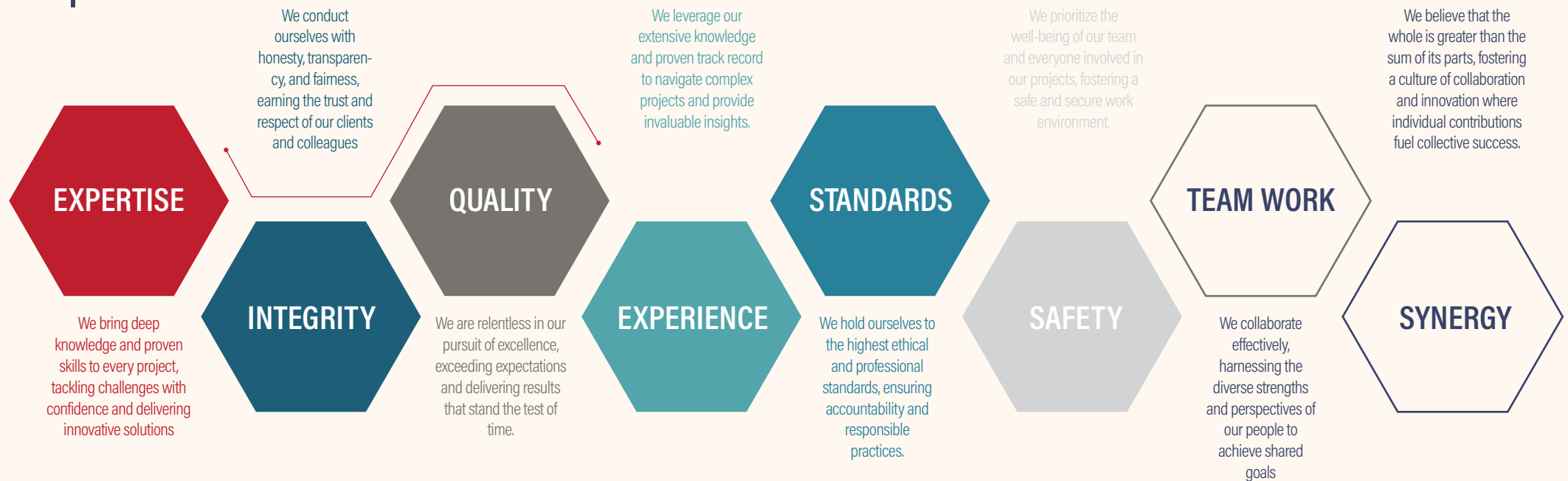
E Design should meet the **Propose Target**
The Goal of engineering design is always to solve a problem.

E Design should be **Applicable**
Engineering design also should be leading to improved solutions and positive outcomes.



Our Core values

At DIAR, we're guided by [8] Core Values that fuel our success and shape our Interactions with each other and our clients.



OUR
CORE VALUES

Why Diar... ?

At Diar we partner with our clients to **provide superior quality solutions that deliver – or Exceed - the results** they are seeking and give them peace of mind that their operations are running smoothly.

Our Team CULTURE

Every day we work to maintain the highest level of our personnel's competence through regular training, organizational tests and the implementation of proven human resource management methods.

The members of our team have gained their experience while working on many projects and designing solutions for **international corporations as leaders in their industries.**

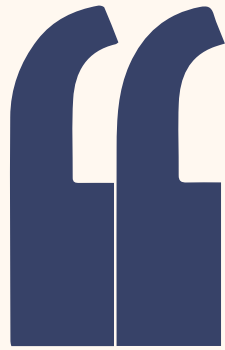
We have a reputation for innovation and a proven track record for success, having **completed numerous major projects, both national and international**, on spec, on time and on budget.



Health and safety is more than just a mantra at Diar; it is a driving force behind every element of our business operation. We have a genuine commitment to conserving the natural environment, where we are recognized as leaders in our field.



Making
your Vision
become a **Reality**
is our Specialty

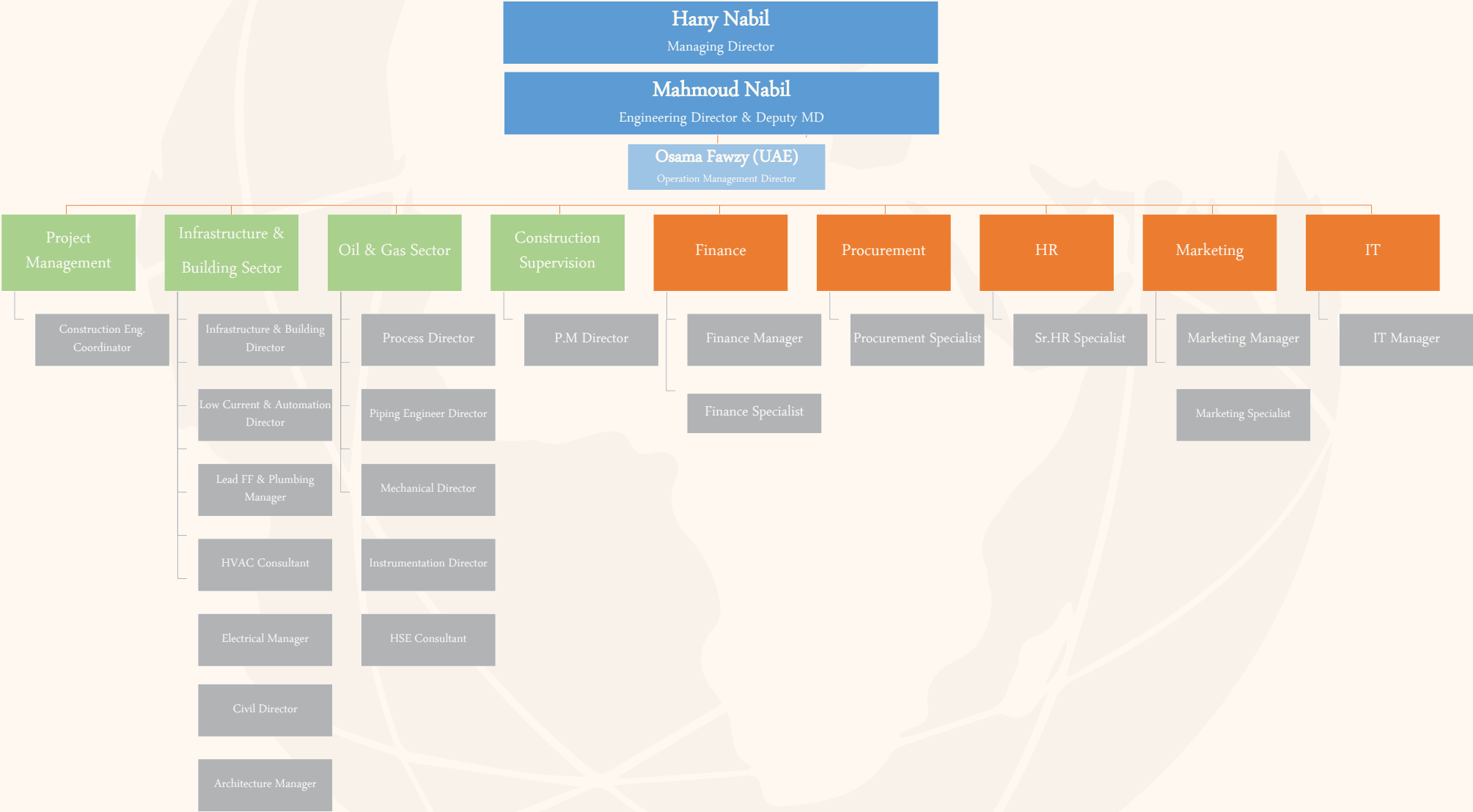


A CLOSE LOOK AT
DIAR CONSULTING
GROUP



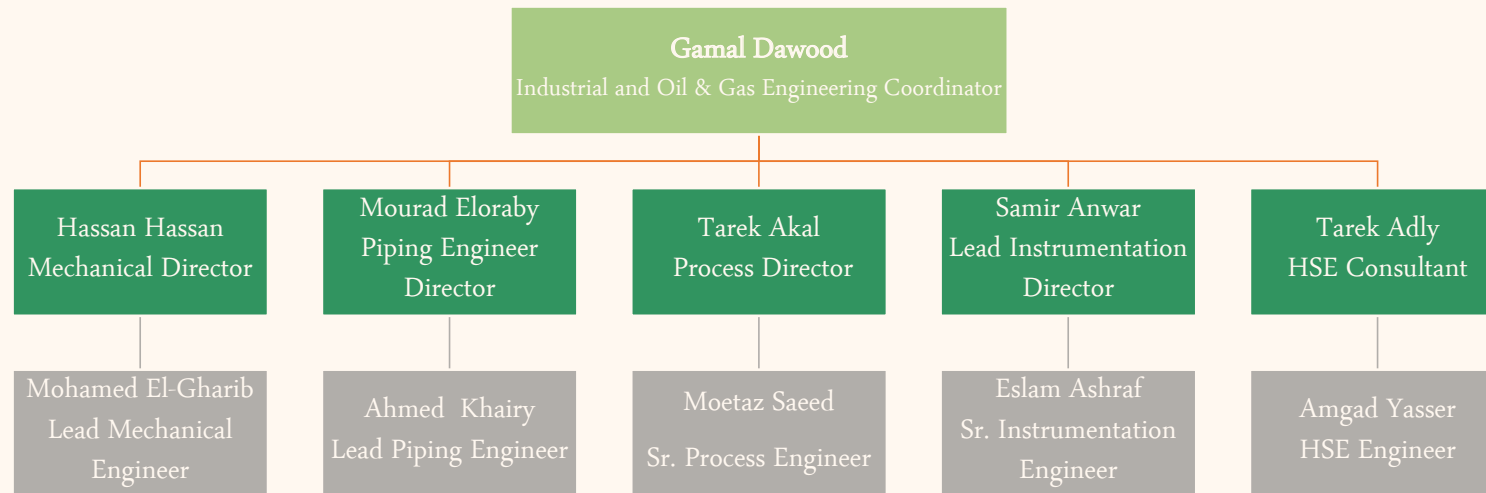
Company ORG Chart

Company Organization Chart Infrastructure & Buildings Engineering Sector

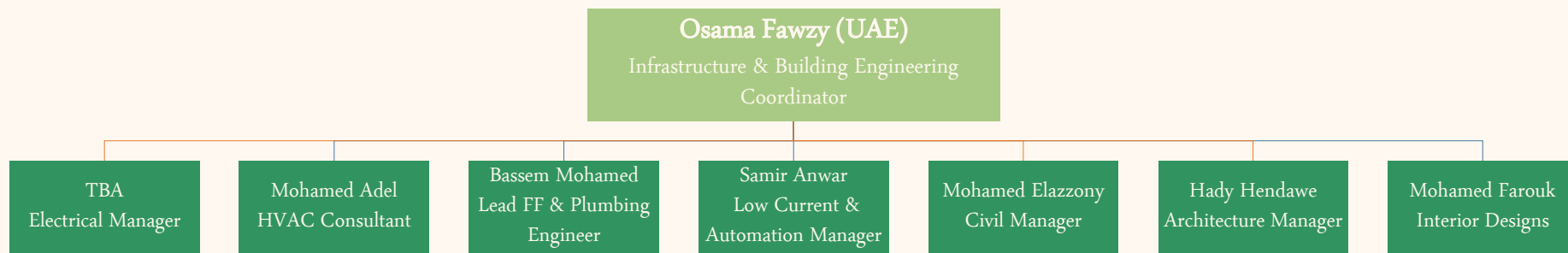


Company ORG Chart

Industrial and oil & Gas Engineering Discipline

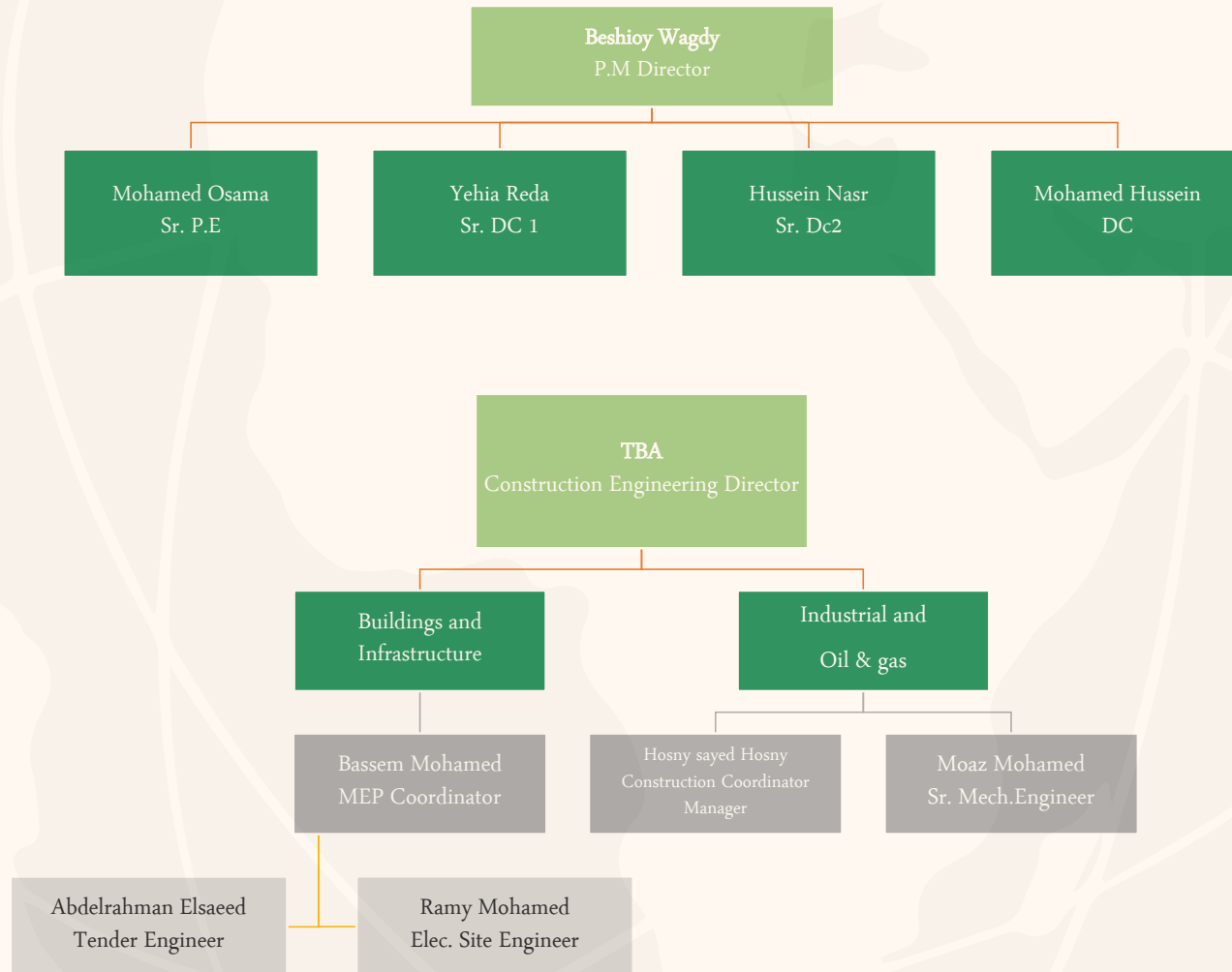



Buildings and Infrastructure Engineering Discipline



Company ORG Chart

Industrial and oil & Gas Engineering Discipline



A construction site at dusk with several cranes and a large blue graphic element in the upper right corner. The sky is a deep blue with some clouds. The cranes are silhouetted against the sky, with some lights visible on their jibs. The overall scene is industrial and active.

Diar Consulting Group

Business Fields

**Infrastructure &
Buildings**

**Industrial and
Oil & Gas**

Business Fields

DIAR has provided reliable solutions for different types of projects: Building, infrastructure, Industrial, and Oil & Gas according to international standards.

DIAR services including **Engineering, procurement, and construction to meet our client satisfaction with high quality and minimum cost.** DIAR believes that our quality is the main target for our team to be a competitive company in the world.



CONSULTING



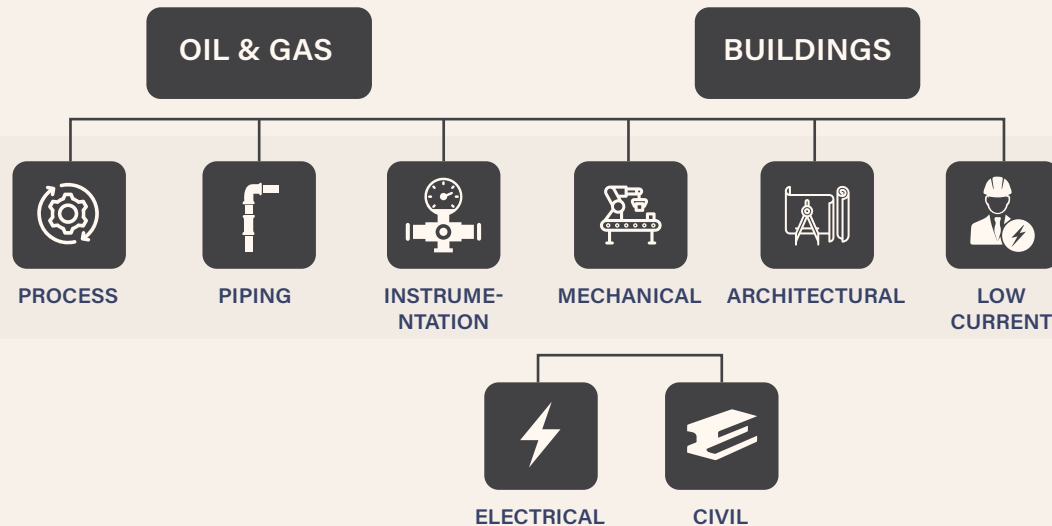
EPC CONTRACTS



PMC MANAGEMENT

Engineering Disciplines

Diar has a diverse range of engineering fields. Having expertise in those engineering Various fields can provide a comprehensive solution for various projects and industries.



Engineering Disciplines

Engineering Consultant for Oil&Gas Industrial, Buildings ad Infrastructure

DIAR services including **Engineering, procurement, and construction to meet our client satisfaction with high quality and minimum cost.** DIAR believes that our quality is the main target for our team to be a competitive company in the world.



Since we Started our Business in 2009, Diar always keen to be the Engineering arm for all types of companies and organization in order to drive thier idea and dream to Reality with our 8 magical Elements to success.

INTEGRITY

QUALITY

EXPERIENCE

STANDARDS

SYNERGY

EXPERTISE

Engineering **Projects Phases**

Engineering Consultant Services for Buildings and Infrastructure

DIAR services including Engineering, procurement, and construction to meet our client satisfaction with high quality and minimum cost. DIAR believes that our quality is the main target for our team to be a competitive company in the world.

PHASE 01

CONCEPT SELECTION AND FEASIBILITY STUDIES

Feasibility Study:

It is an analysis into the viability of an idea. It is the initial design stage to any project or plan.

Concept Selection is an element of the design process. It enables you to pick the idea(s) which best satisfy the Design Specification.

PHASE 02

CONCEPT DESIGN

It's the point within the development cycle that typically sits between the Project requirements and detailed design.

PHASE 03

SCHEMATIC

the project team determines the areas, physical requirements and relationships of all the required building spaces and components, then confirms or revises the total building square footage and the total project budget, as well as the project schedule and occupancy dates.

PHASE 04

DETAILED DESIGN

Detailed engineering design includes the following stages: Checking specifications. Defining subsystems, checking, and assembling parts. Finalizing individual parts and accomplishing technical calculations.

PHASE 05

TENDER DOCUMENTS

The set of documents prepared by a quantity surveyor to invite bids from contractors, including drawings, specifications, bills of quantities, and contractual terms.

PHASE 06

IFC

IFC (Issued for Construction) and Shop Drawings play an important role in detailing out information about all components in a construction project. Extracting these drawings can help all involved stakeholders to speed up the project.

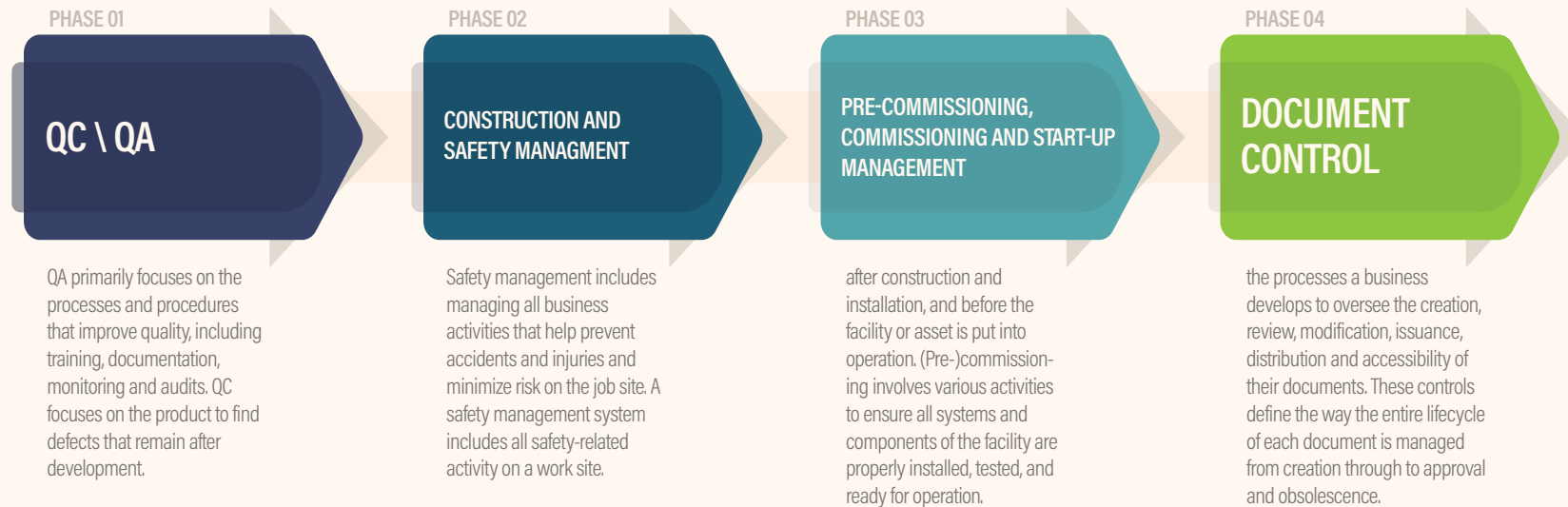
PHASE 07

PROCUREMENT SUPPORT

EPC contracting is a type of contract in which the contractor is responsible for the design, engineering, procurement, and construction supervision of a project

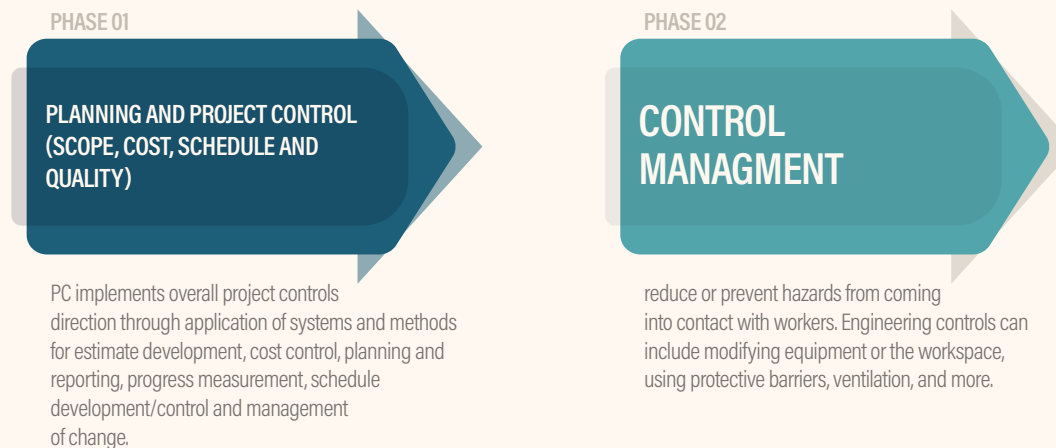
Engineering Projects Phases

Construction Management and Site Supervision



Engineering Projects Phases

Project Management Consultation



**DIAR BRINGS THE EXPERTISE OF MULTINATIONAL CONSULTANTS CAPABILITIES
COUPLED WITH THE HISTORY OF SUCCESSES, TECHNICAL AND LOCAL
KNOWLEDGE OF MIDDLE EAST MARKET..**



OUR ENGINEERING DISCIPLINES-DELIVERABLES

1. ARCHITECTURE

Architecture and design consultancy focusing on strategy, architecture and design for corporate, public sector and education clients for new build, refurbishment and heritage projects.

Our team has wealth of experience and comprises architects, interior designers, analysts, technicians, graphic designers and communication experts.

We cover all architectural work stages, adding further value with our extensive analytical tools and experience.



- Architectural Design
- Interior Design.
- Detailed Design.
- Working Drawing.
- 3d Modeling & Rendering.
- CAD Conversion/As Built Drawings.
- Interior Design.
- Detailed Design.
- Working Drawing.
- 3d Modeling & Rendering.
- CAD Conversion/As Built Drawings.



2. CIVIL

Our designers and technicians can provide quality engineering, and a broad base of practical experience for your project. Presently, we can undertake the following:-

Civil...

- Foundation design, analysis and details for equipment/machinery, storage tank, bunkers and silos, bridge,
- Industrial plant structures, tunnels, ducts, utility towers, galleries and walkways, pipe racks and general structures.
- Reinforcement detailing and bar bending schedules.
- RCC drawings, shuttering plans
- Water supply and distribution plans and details
- Reservoirs & water tank details.



REVIT SUPPORT

- Diar Consulting Group is a group of (BIM Managers, BIM Consultants, BIM programmers, Technical support, Specialists, Autodesk certified professional users).
- Diar are ready to provide (BIM Training, BIM Technical support, BIM Implementation)
- Methodology: BIM Consultancy, BIM Modeling for BIM users and companies.
- Also we are publisher on Autodesk store.
- Diar Offers a Free BIM Presentations for the new users & companies.
- Our services include Autodesk Revit and Autodesk Navisworks.
- Manage software products including but not limited to incorporating new version releases and customization of the product
- Manage the implementation of supporting software for ,BIM
- Evaluate new BIM related software and technologies
- Stay informed on best practices for use of Revit BIM.
- Stay informed on other BIM related Software and how they work with Revit
- Installation and support of related BIM software.

LEARN.
PERFORM.
RESULTS.

Certificate of Completion

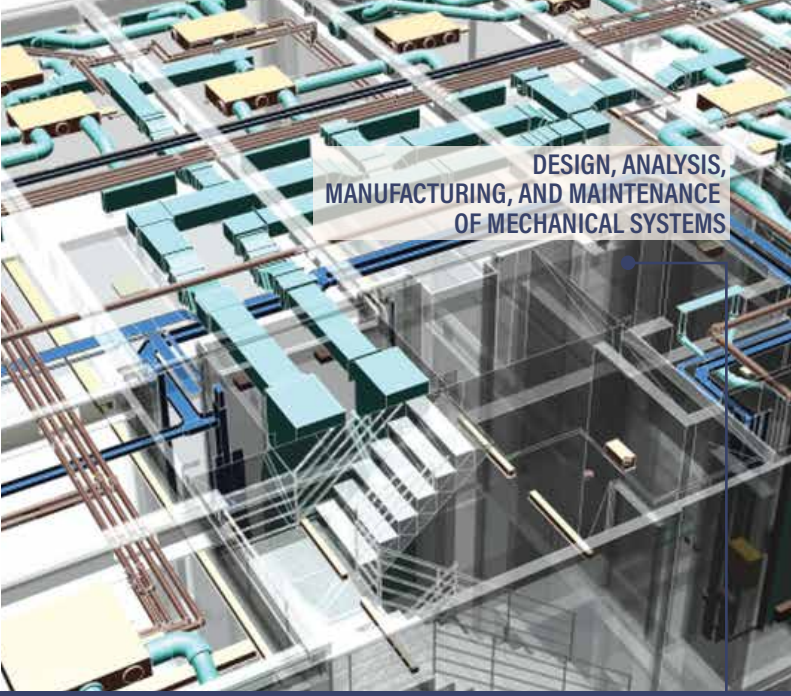
Completed
This is to certify that the above mentioned project has been completed successfully and the client is satisfied with the work done by Diar Consulting Group.

Project & Reference
Name
Client
Date

26 Nov 2017
11:51, 11:51:51 AM

Autodesk
BIM CONSULTANT

Carl Bone
Carl Bone
BIM Manager, Diar Consulting Group



DESIGN, ANALYSIS,
MANUFACTURING, AND MAINTENANCE
OF MECHANICAL SYSTEMS

3. MECHANICAL

- Tanks detailed and fabrication drawings.
- Static Equipment detailed and fabrication design. (Vessels, tanks)
- Machinery equipment specifications, datasheets & material requisitions.
- Cooling Load Estimation.
- Duct Design.
- Equipment selection.
- Chilled Water piping.
- Pump head & flow calculation.
- Water tanks calculation.
- Rain water and drainage design.
- Electrical Water Heaters design.
- Designed as a green building for LEED Certification.

4. ELECTRICAL ENGINEERING

- Electrical Systems' Analytical and Special studies
- Grid-Connected Power Generation Plants.
- High Voltage Grid-Connected Substations
- MV Overhead Transmission Lines
- Island and Field Interconnected Power Generation Plants.
- MV and LV Power Distribution Systems (Indoor, - Outdoor and Explosion Proof)
- Electrical Prefabricated Substations, Modules and Kiosks.
- AC & DC UPS systems
- Power Factor Improvement capacitor banks.
- Solar Power units
- Cabling and Raceways Systems
- Lighting Systems
- Grounding and Lightning Systems
- Navigational Aids
- Electrical Heat Tracing



5. LOW CURRENT

- Data.
- VOIP Telephony System or conventional PABX system.
- IPTV or MATV system.
- Audio visual system.
- Public address system.
- Fire alarm systems.
- Car parking security system.
- IP-CCTV or conventional CCTV.
- Access Control system.
- Digital Signage system.
- Master Clock system.
- Building Management System BMS.



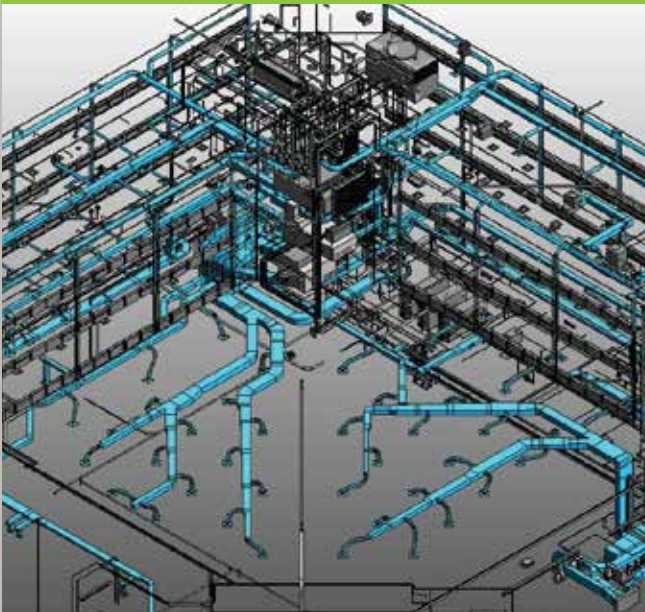


6. LANDSCAPE

- Site survey and analysis
- Program of needs
- Conceptual design sketches and models
- Landscape construction plans
- Plant lists and specifications
- Material specifications
- Lighting plans
- Signage and wayfinding plans
- Sustainability reports
- Construction details and specifications (shop drawings)
- 2d & 3D models and renderings
- As-built drawings

7. MEP

- Mechanical drawings and specifications: Detailed plans for HVAC systems, ductwork, piping, equipment selection, and control systems.
- Electrical drawings and specifications: Comprehensive plans for power distribution, lighting, communication systems, and fire alarm systems.
- Plumbing drawings and specifications: Detailed plans for water supply, drainage, waste disposal, and sanitary systems
- 3D models and simulations: Visual representations of the MEP systems and simulations of their performance.



8. HSE

1. HSE Plan which identifies potential hazards, assesses risks, and defines control measures to minimize them.
2. Risk Assessment also includes recommendations for risk mitigation and control.
3. Safe Work Procedures (SWPs) They include information on personal protective equipment (PPE), tools and equipment use, and emergency procedures.
4. Environmental Impact Assessment (EIA)
5. Emergency Response Plan
6. Training Materials
7. Permits and Approvals
8. Monitoring and Reporting

The specific HSE engineering deliverables required for a project will vary depending on the project's size, complexity, and location.

OUR PMC DELIVERABLES

1. Planning Aspect

- Develop Master time schedule
- Monthly update, and one month look ahead
- Develop monthly report
- Weekly report for all staff including the critical activities should be finish next week, and the delayed activities for current week
- Develop reports for cause of delays and how to crash
- Develop crashed time schedule if needed

2. Cost control Aspect

- Develop S- Curve, and expected cash Flow
- Develop cost control system , as log for all subcontractors and all activity will performed in house and estimate cost for each items
- Identify target cost
- Update cost estimate and calculate variance of cost
- Make cost analysis and develop corrective actions
- Develop monthly cost report
- Create all cost indexes, SPI, CPI, ETC, EAC
- Analysis all variation orders

3. Resource Management Aspect

- Resource allocated for activities (equipment& labor & material)
- Managing the resource over project life

4. Contract Administration Aspect

- Review contract terms and identify all obligations
- Identify financial and contractual commitment
- Develop delay analysis and time impact analysis
- Prepare all contractual litters
- Respond for all consultant contractual litters
- Monitors and alarm for all potential claims
- Prepare claim document and develop all claims



AIU	1,822	1,822	1,822
	(-35)	(-80)	(-30)
MBC	3,605	9,542	2,609
	(+210)	(+128)	(+35)
YBV	3,204	5,211	7,100
	(-33)	(+156)	(-60)
MBB	3,320	712	134
	(-120)	(+12)	(+5)



QUALITY, ENVIRONMENTAL, HEALTH & SAFETY MANAGEMENT SYSTEM



Out of international/national interest of the quality, environment, and occupational health & safety and in line with Egypt's vision 2030 for achieving sustainable development and the company's interest with the customer's satisfaction and continual improvement, Diar has the leadership in obtaining certificates of international standards for:

These certifications demonstrate Diar's commitment to meeting international standards in these areas and ensuring the well-being of its employees, customers, and the environment. By obtaining these certificates, Diar aims to enhance its reputation, attract more customers, and contribute to Egypt's vision of sustainable development.

- Quality Management Systems (ISO 9001)
- Environmental Management Systems (ISO 14001)
- Occupational Health & Safety Management Systems (ISO 45001)

The implementation of the requirements of these international standards was effectively considered in all of the company's projects and activities in all stages (design, procurement and construction supervision) through an integrated management system to monitor, evaluate and improve Diar performance in the Quality, Environmental & Safety and Customer Support Management Systems.



DIAR PROJECTS

PMC (PROJECT MANAGEMENT CONSULTING)
BUILDINGS AND INFRASTRUCTURE

Project Management Consulting Projects



Project Management Consulting Industrial and (oil & Gas)

1- El Shohada New Hospital - El Shohada City

The establishment of the New Shohdaa Hospital on an area of approximately 21,000 square meters, with a financial appropriation of half a billion pounds, as the Undersecretary of the Ministry of Health indicated that the designs for the hospital are being prepared to start implementation.

2- Dry Port 6 th October

The company intended to develop, construct and operate, and maintenance of the 6th of October Dry Port ("DP6"), the first inland dry port in Egypt in the city of 6th of October, west of Cairo (signed on 09 September 2021).

New SHOHDA

Hospital construction Project

The establishment of the New Martyrs Hospital on an area of approximately 21,000 square meters, with a financial appropriation of half a billion pounds, as the Undersecretary of the Ministry of Health indicated that the designs for the hospital are being prepared to start implementation.



The new hospital will be established with a financial appropriation of half a billion pounds on an area of approximately 20,800 square meters, which is scheduled to be included in the comprehensive health insurance system, and to provide services to the people of the city of Shahdaa and all the 27 villages of the center.

New SHOHDA

Hospital construction Project



Diar Scope of Work was the Project (PMC)

- Consultant of the main contractor.
- Main coordinator between ministry of health, owner consultant and project contractor and designer.
- Designer reviewer for all disciplines as of architectural, civil and MEP.
- Supervisor consultant for all construction works at site.

- **Project development and planning:** Defining project scope, developing budgets, establishing schedules, and identifying potential risks.
- **Design management:** Reviewing architectural and engineering plans, ensuring compliance with regulatory standards.
- **Procurement strategy development:** Assisting with bid packages, vendor selection, and contract negotiation for construction materials, equipment, and services.
- **Permitting and approvals:** Navigating the complex regulatory landscape and obtaining necessary permits and approvals for construction.
- **Construction management:** Overseeing construction activities, managing contractors, subcontractors, and suppliers.
- **Schedule and budget monitoring**
- **Quality control and risk management:** Implementing quality control measures.
- **Communication and stakeholder management:** Facilitating communication between all project stakeholders, including hospital staff, contractors, regulatory bodies, and the community.

Dry Port 6th October

OCTOBER DRY PORT COMPANY (A JOINT STOCK COMPANY ESTABLISHED IN EGYPT TO FINANCE THE DESIGN)

FIRST DRY PORT IN EGYPT



The company intended to develop, construct and operate, and maintenance of the 6th of October Dry Port ("DP6"), the first inland dry port in Egypt in the city of 6th of October, west of Cairo (signed on 09 September 2021).

The Project is the City's "trigger investment" under EBRD Green Cities Framework 2 Window 2 ("GrCF2 W2") formally initiating 6th of October's participation in the programme and enabling the start of the development of the Green City Action Plan ("GCAP") with the New Urban Communities Authority ("NUCA") for the 6th of October City.

Dry Port 6th October

USD 176 Million to Construct First Dry Port at 6th of October City

Project Overview:

The project involves the supply and installation of GOEC (General Organization for Export and Import Control) laboratories within the October Dry Port located in 6th of October City. The specific location of the project is Building no 3, Floor 3, which has a total area of 700 m2. The floor has been divided into different zones to accommodate the specific requirements of the laboratories, offices, and service corridors.

Project Scope of Work:

The scope of work includes demolition, masonry works, flooring and wall tiles installation, installation of wooden doors, marble flooring, false ceiling, and mechanical and electrical works. These tasks encompass clearing the area, constructing walls, installing flooring and wall tiles, setting up wooden doors, incorporating marble flooring, installing false ceilings, and implementing HVAC and electrical systems.



A large red tower crane is the central focus of the image, extending from the bottom towards the top. The crane's lattice structure is clearly visible, and it is set against a clear, light blue sky. The crane's jib extends diagonally across the frame. The overall scene is a construction site, likely for a residential or infrastructure project.

DIAR PROJECTS

RUNNING RESIDENTIAL PROJECTS
BUILDINGS AND INFRASTRUCTURE

RUNNING PROJECTS IN KSA

Z 12 (AL WADI PALACE)

Al Wadi Palace Developing its premises on Saudi Arabia and intending to make the Palace as a Prevailing facilities and technology in the market.

Built Up- Area: 46,382 m²

Owner : Z12

Location : Saudi Arabia

Client: METICULOUS

The palace space including the following sections:

1. Son private zone 1.
2. Son private zone 2.
3. Son private zone 3.
4. Sons Common area.
5. Sons Golf Academy.



FAMILY ZONE

1. Sons Entertainment
2. Sons Villa 3
3. Sons Villa 2
4. Education Building



PRIVATE ZONE

1. His Private Suite
2. Car Display
3. Male Guest Villa
4. Sport Area
5. Golf Clubhouse



PUBLIC ZONE



RUNNING PROJECTS IN KSA

Z 12 (AL WADI PALACE)

RECREATION AREA

- 1 Son's Area Entry
- 2 Recreation Area Entry
- 3 Formal Majlis / Dewan
- 4 Formal Dining
- 5 Casual Living
- 6 Burger / Juice
- 7 Bar Bowling Hub
- 8 Gaming Center
- 9 Cycling Area
- 10 Golf Academy
- 11 Top Golf
- 12 Look Out
- 13 Gathering Tent
- 14 Changing / WC
- 15 BOH/Service

SPORTS AREA

- 16 Sport area Entry
- 17 Juice Station
- 18 Burger Bar
- 19 Casual Family Gathering Lounge
- 20 Surf Pool / Swimming Pool
- 21 Lazy River / Swimming Pool
- 22 Recovery Zone
- 23 Lap Pool
- 24 Multi Purpose Sports Hall
- 25 Gymnastic / Trampoline Zone
- 26 Pro- Shop
- 27 Paddle Tennis Court
- 28 Adventure Zone
- 29 Skateboard Skate Zone
- 30 Parkour Area
- 31 BBQ Family Gathering
- 32 Seating Area
- 33 Football Shield
- 34 Martial Arts Hub
- 35 Changing / WC
- 36 BOH / Service

EDUCATION AREA

- 37 Educational Building Entry
- 38 Teacher's Entry
- 39 Teacher's Zone
- 40 Educational Lounge
- 41 Storytelling
- 42 Library
- 43 Study Lounge
- 44 Flexible Study
- 45 Group Study
- 46 Study Tutorials
- 47 WC
- 48 BOH / Service



RUNNING PROJECTS IN KSA

Z 12 (AL WADI PALACE)

Scope of work:

Project scope the "Design Services" from the schematics to Tender stages as per the requirements of the client mentioned in this offer.

Moreover, the required offer to include the estimated Design Stage duration – (project schedule) in weeks,

The consultancy services are including the following:

- Schematic design.
- Detailed Design Development.
- Tender stage “Drawings & BOQ & Specs”.



RUNNING PROJECTS IN KSA

Y OFFICE TOWER, SAUDI ARABIA, LUSAIL

PRIME Company is developing its premises on the Saudi Arabia and intending to make the mentioned offices tower as a Prevailing offices facilities and technology in the market. It is located in lusail city; The project information and statistics are given below;

Name of the Project : Y OFFICE TOWER

Owner : PRIME company

Location : Saudi arabia

Type of Development : 6 Basements + Ground +mezzanine + 25 floors + roof

Built Up- Area : 27,122 m2 excluding roof areas

The project is endeavored to perform the detailed design for the floors including Architectural, civil and MEP design packages in the building and site layout.

Scope of Work:

Stage 01- Concept Design stage

Design concept for different offices spaces

- Design Criteria Report for all related MEP Disciplines
- Updated Design Criteria Report for (Power service distribution, Lighting, Telephones, Fire detections and alarms, Security Systems, Electronic communications, Special electrical systems, Lighting Lux calculations.)

Stage 02- Detailed Design Stage
Architectural:

- Architectural layout proposal.
- Finishing and furniture layout.
- Celling layout.

Civil:

- Design Calculations.
- Structural detailed layouts
- Civil study and design report c) Electrical:
 - Design Calculations
 - Small Power Distribution Layouts
 - Mechanical Power & Main Feeder Layout
 - Lighting Layouts
 - Earthing & Lightning Protection Systems
 - Panel board Schedules
 - Single Line Diagrams.
 - Schedules of Lighting Fixtures



RUNNING PROJECTS IN KSA

Y OFFICE TOWER, SAUDI ARABIA, LUSAIL



Low Current:

- Fire Alarm Detection System
- Telephone & Data Network
- Access control system
- Public address system
- CCTV system
- Low Current System Risers

Mechanical:

- Mechanical Design Calculations
- Water Supply Layouts & Details
- Fire Fighting Layouts & Details
- Drainage Layouts & Details
- HVAC Duct Layout
- HVAC Chilled water Pipes Layout
- Typical Details
- Equipment Schedules & Selection

Stage 03 - Tender Documents Upon the approval of detailed design package, the Consultant shall proceed to prepare the tender documents package for review and approval by Medical Group team.



RUNNING PROJECTS IN YEMEN

AL BEYAA AL MOSTAFWEYA YEMEN-HADRMAUT



Developing its premises on the Yemen and intending to make the compound as a Prevailing residences facilities and technology in the market. It is located in Hadramout city; The project information and statistics are given below;

Name of the Project : ALBEYAA ALMOSTA-FAWEYA

Owner : Al SAKEENA

Location : Yemen

Type of Development : residential compound

Built Up- Area : 16,200 m²

The offices space including the following sections:

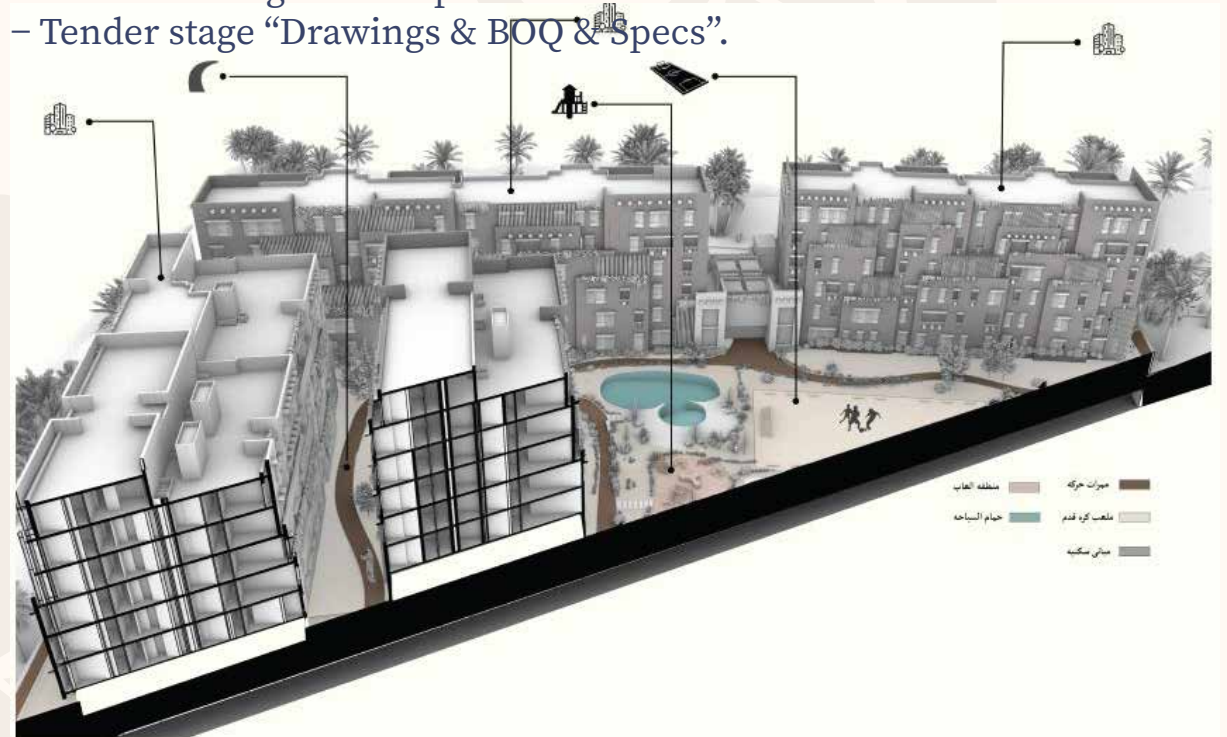
1. 14 residential buildings.
2. Hotel and mosque.
3. Infra structure works.

The project is endeavored to perform the detailed design for the floors including Architectural, civil and MEP design packages in the building and site layout.

SCOPE OF WORK

Project scope the "Design Services" form the Concept to Tender stages as per the requirements of the client mentioned in this offer. Moreover, the required offer to include the estimated Design Stage duration – (project schedule) in weeks, The consultancy services are including the following:

- Concept design review and modify
- Detailed Design Development.
- Tender stage “Drawings & BOQ & Specs”.





DIAR PROJECTS

ARCHITECTURE PROJECTS

Residential, Commercial, Administrative

Villa Mr\Ahmed Nabil (Bahrain) (Diar El Muharraq)

Diar scope of work is to perform and deliver the complete following items:

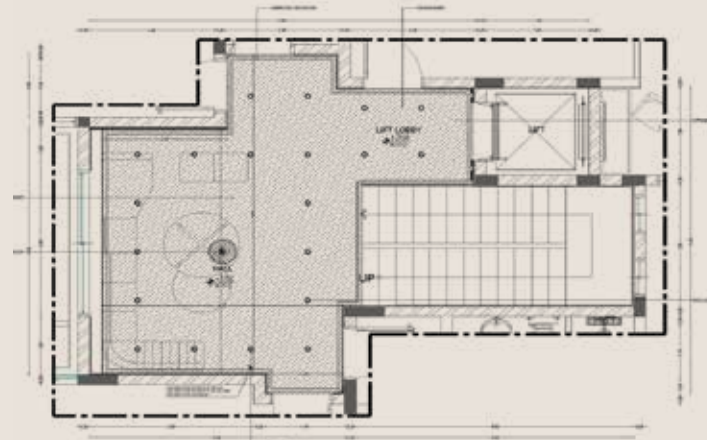
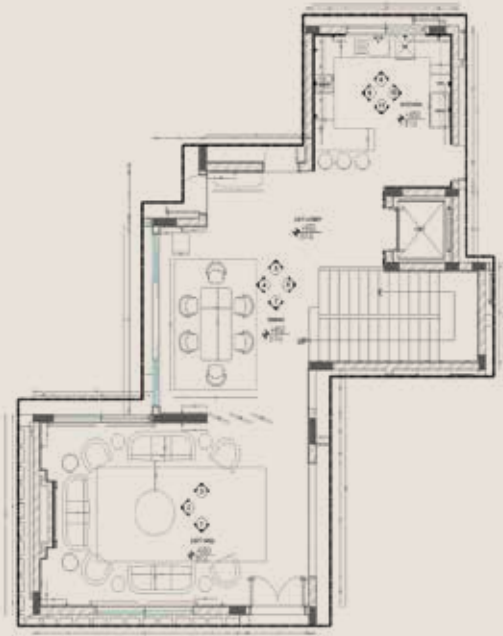
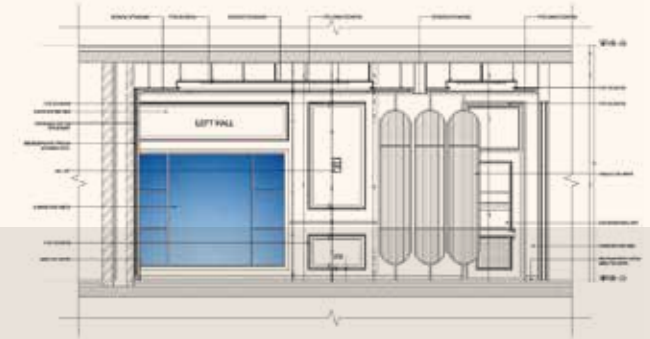
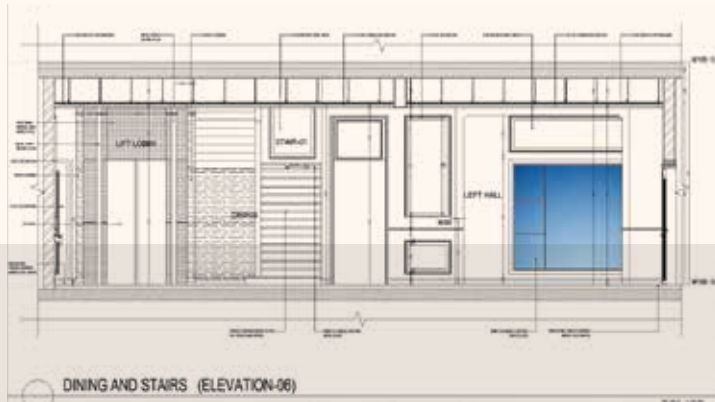
- Architecture Design Package as per Construction requirements
- Architecture Shop drawings

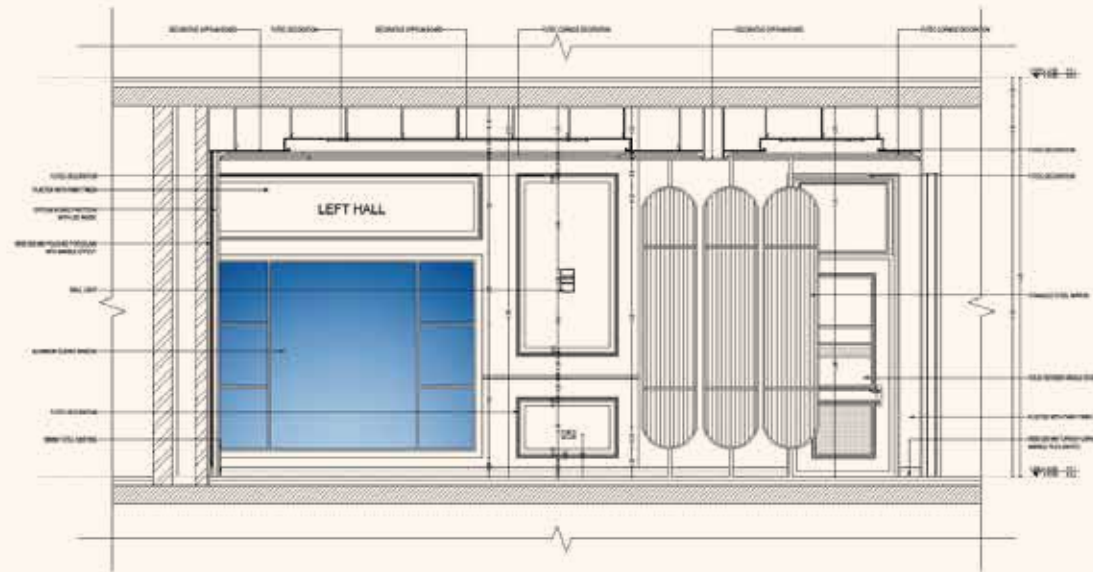


Interior Shots

Villa Mr\Ahmed Nabil (Bahrain)

(Diar El Muharraq)





○ LEFT SALON (ELEVATION-03)

SCALE: 1:20 M



○ DINING (ELEVATION-04)

SCALE: 1:20 M

CLIENT :



PROJECT :

Villa Mr/Ahmed Nabil
(diyar Al Muharraq)
(Bahrain)

MAIN CONSULTANT :



KEY PLAN :



PROJECT ORIENTATION :

NOTES :

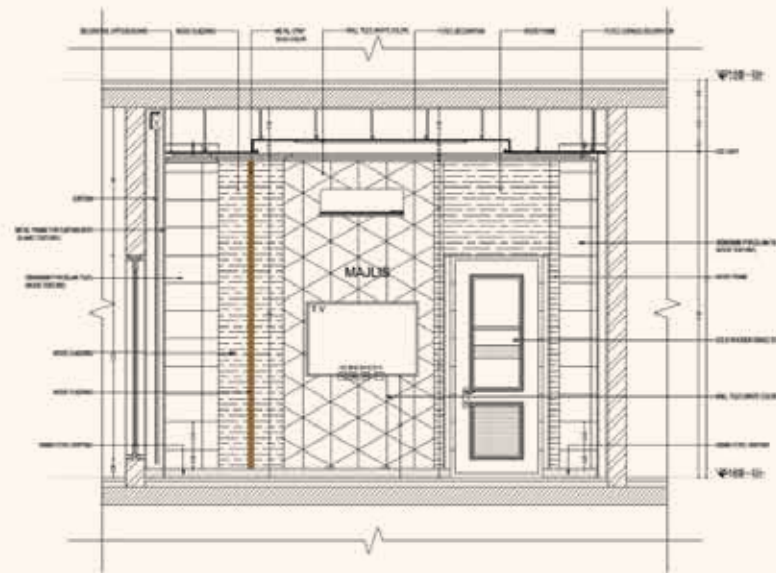
NO.	REVISION	DATE	BY	CHK	APP	DATE

Villa Mr/Ahmed Nabil
(diyar Al Muharraq)
(Bahrain)

Architecture

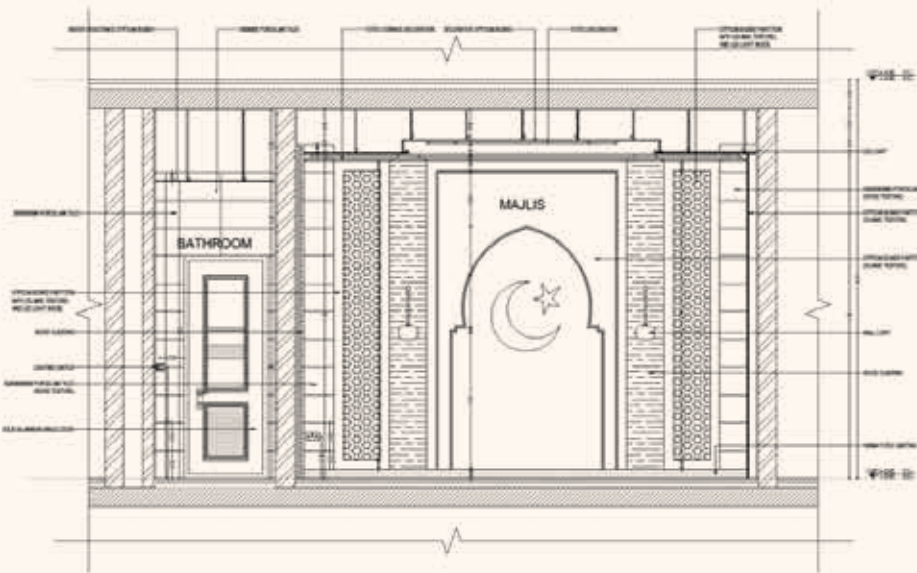
GROUND FLOOR
(LEFT SALON, DINING AND KITCHEN)

NO.	REVISION	DATE	BY	CHK	APP	DATE



MAJLIS ELEVATION-01

SCALE: 1:20 M



MAJLIS ELEVATION-02

SCALE: 1:20 M

CLIENT :



PROJECT :

Villa Mr/Ahmed Nabil
(diyar Al Muharraq)
(Bahrain)

MAIN CONSULTANT :



KEY PLAN :



PROJECT ORIENTATION :

NOTES :

NO.	REVISION	DATE	BY	CHECKED

Villa Mr/Ahmed Nabil
(diyar Al Muharraq)
(Bahrain)

Architecture

GROUND FLOOR
(MAJLIS)

NO.	REVISION	DATE	BY	CHECKED

Luxury Villa Bahrain

Diar scope of work is to perform and deliver the complete following items:

- **Architecture Design Package as per Construction requirements**
- **Architecture exterior shots**





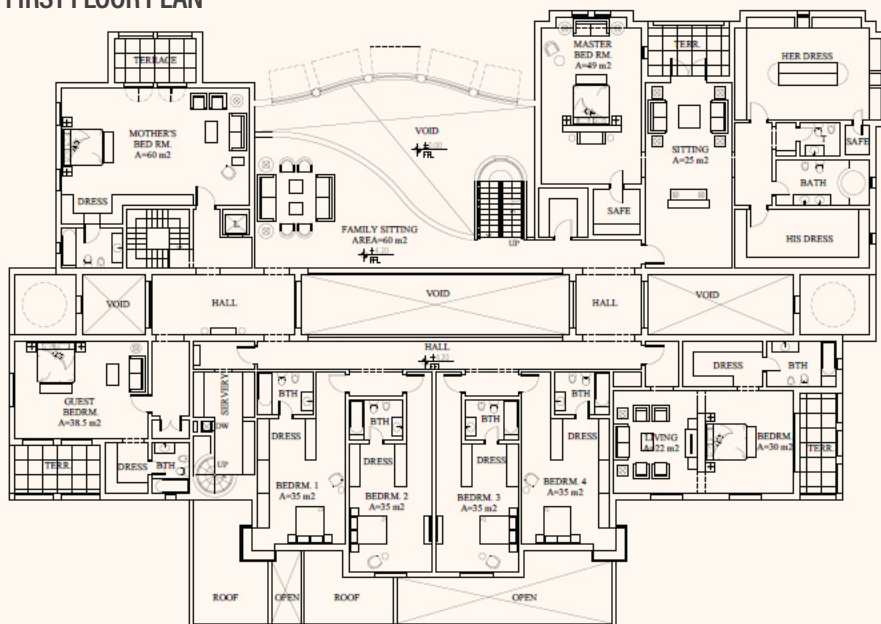
Riyad Private Villa, KSA

Private Luxurious Villa Located in Saudi Arabia

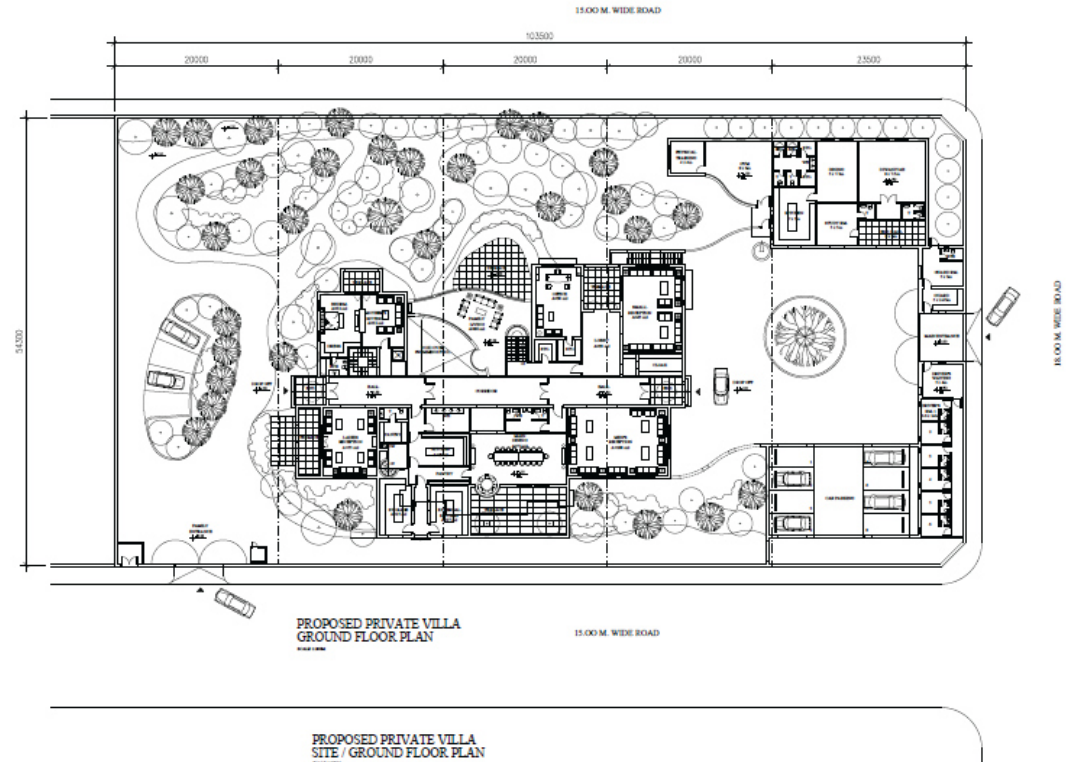
Diar Scope was the Engineering Design Package:

- Detailed Engineering Drawings: The engineer will produce detailed construction drawings for all structural elements, including foundations, walls, floors, roofs, and staircases
- Mechanical, Electrical, and Plumbing (MEP) Design: The engineer will design the MEP systems for the villa, including heating, ventilation, air conditioning, plumbing, electrical wiring, and lighting.

RIYAD PRIVATE VILLA, FIRST FLOOR PLAN



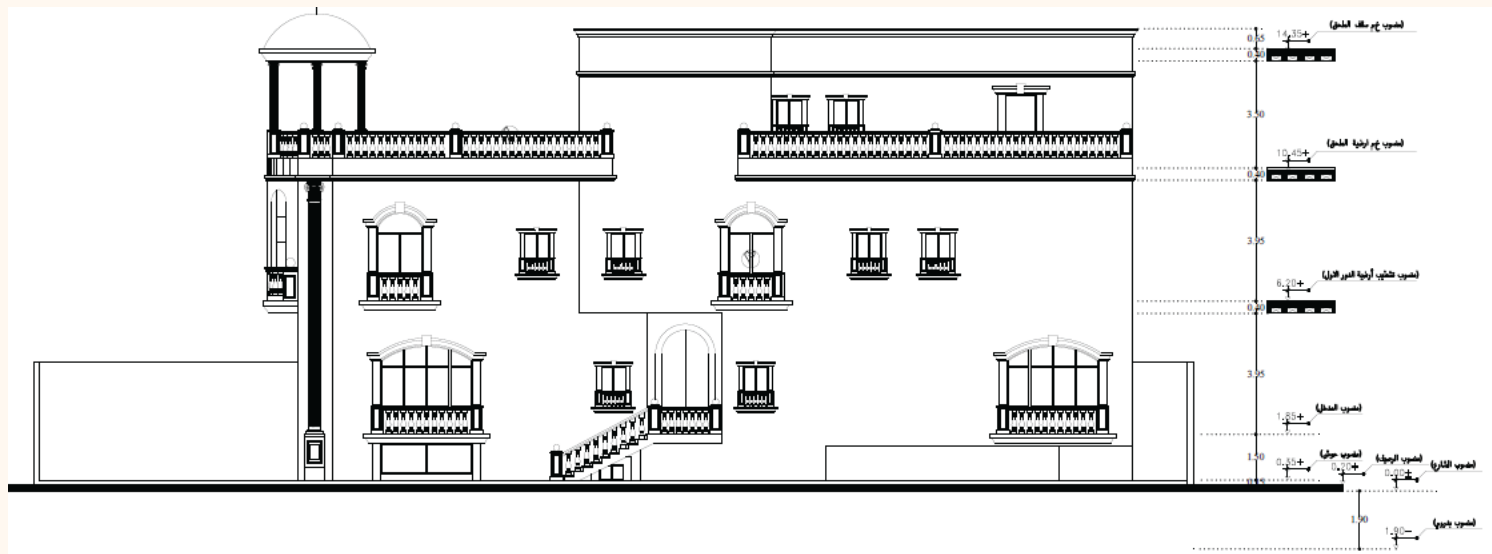
RIYAD PRIVATE VILLA, SITE PLAN



- Structural Calculations and Analysis: The engineer will perform structural calculations to ensure the building can safely withstand the dead loads (permanent weight) and live loads (occupancy and environmental loads).
- In addition to the Landscape Design for the Villa Garden.

Villa ElGuhany, KSA

Private Luxurious Villa Located in Saudi Arabia

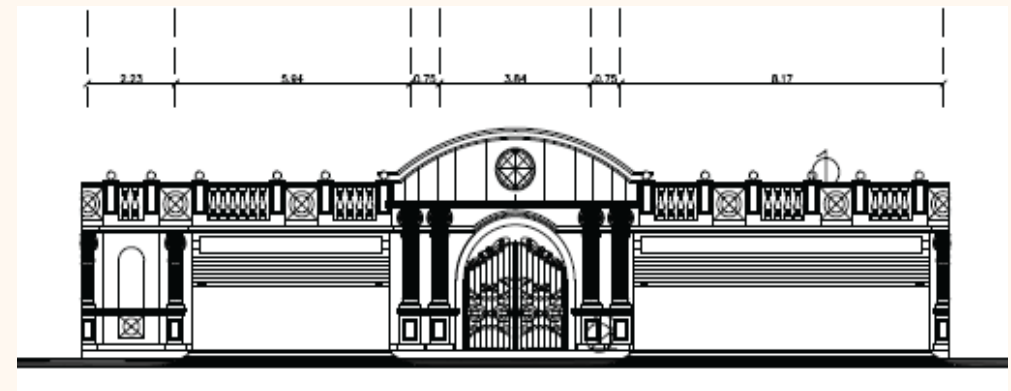


- Equipment Selection: Specifying the types and models of MEP equipment to be used, based on factors like efficiency, budget, and aesthetics.
- Lighting Control Systems: Designing and installing lighting control systems for mood, security, and energy efficiency.

Owner:
Adel Mohamed El Guhany
Location:
Saudi Arabia

Diar Scope was the MEP Engineering Design Package for the Project

- Plumbing: Water supply and distribution, drainage and waste systems, sanitary fixtures, and hot water systems.
- Electrical: Power distribution, lighting design, grounding and bonding, communication systems (phone, internet, etc.), and home automation systems (if desired).
- HVAC: Heating, ventilation, and air conditioning systems, considering factors like climate, building size, and occupant needs.



Marsa Alam Compound

Centamin (SGM)-Marsa Alam Compound

The Project Brief:

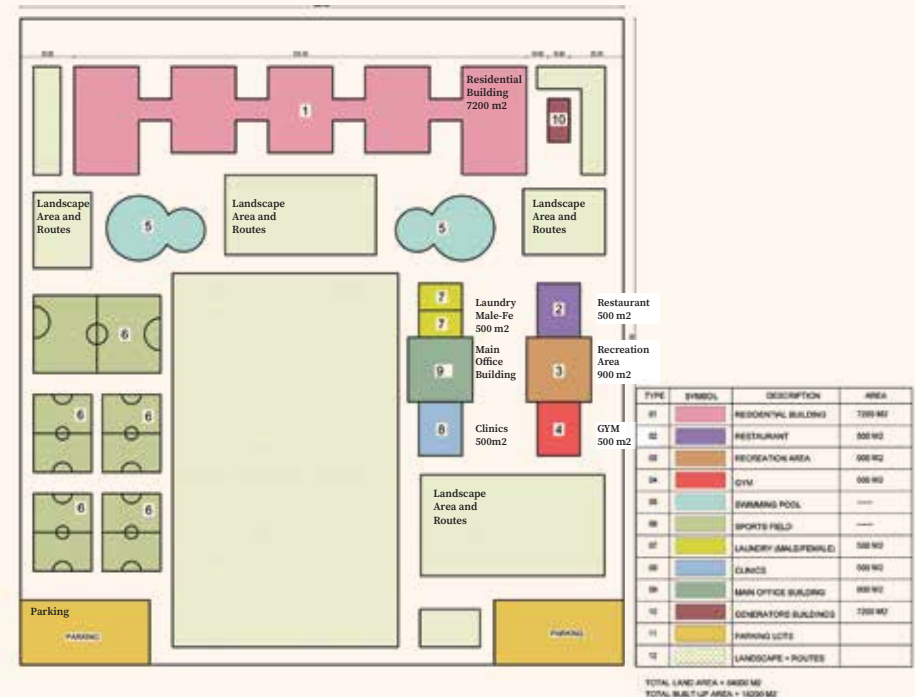
- Centamin (SGM)-Sukari Golden Mines has invited Diar Consulting Group to perform Architectural and Civil works for their Marsa Alam company compound.



Centamin (SGM) are planning on building their company compound at Marsa Alam city with the following requirements:

- A residential building has (256 Double rooms & 178 Single room & 20 VIP room) – with Meeting Room for 20 persons). VIP rooms must be partially but not totally separated from other rooms / Meeting room to have a privacy.
- Restaurant (80 * Persons capacity) with Kitchen (Hot Section, Butcher section, Bakery Section, Salad section, Service tools Section, Fridge Sections, dry Food Storage Section), and food receiving area on the ground floor.
- Recreation Area about 800 m2.
- GYM (21 Machines) including Toilets (Male / Female).

- Swimming Pool.
- Sports Field (5 * Aside dimensions with 4 lanes track).
- Laundry (to be separated by Male / Female).
- Clinic.
- Bikes routes (3 * lanes) around the compound inside perimeter.
- Car Parking (30 Parking lots).
- Generators Area (3 * Gensets) (Generators' noise to be taken into consideration).
- Main Security Gate and Office including rest area.



Dina Farms Shop

El Sheikh Zayed Branch



Dina farms Shop El-Sheikh Zayed

Basic and detailed engineering of the new Shop, MEP design for Shop, el sheikh zayed, including the following:

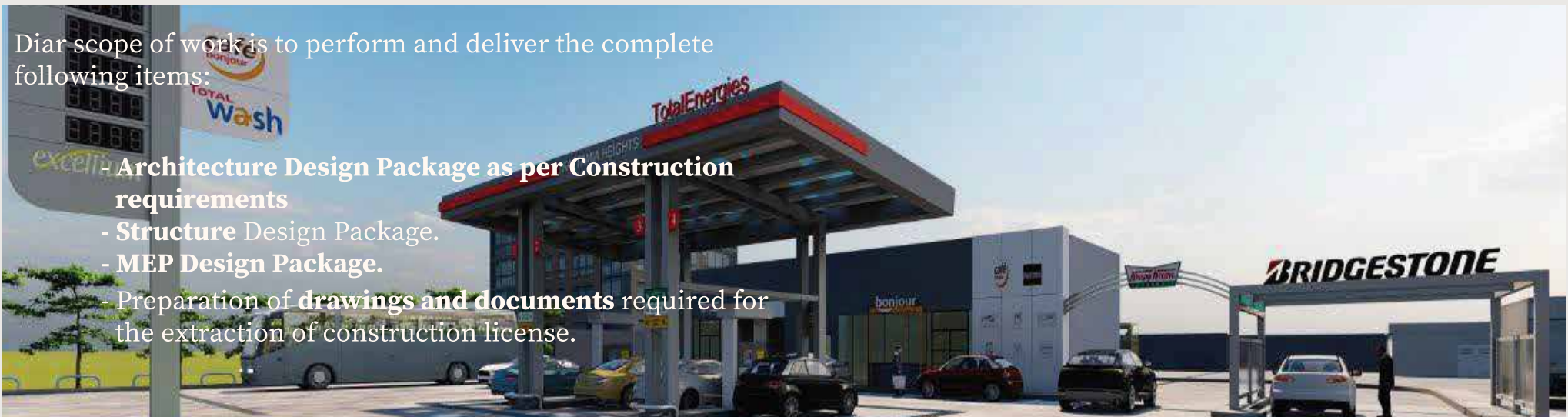
- Electrical engineering
- Mechanical design
- Fire Fighting
- Light current works



Total Station Katameya

Diar scope of work is to perform and deliver the complete following items:

- **Architecture Design Package as per Construction requirements**
- **Structure Design Package.**
- **MEP Design Package.**
- Preparation of **drawings and documents** required for the extraction of construction license.



Siemens

SIEMENS



Dcc Building Control Room

Interior Shots

Siemens intends to install DMS and AMI equipment such as servers, operator consoles, video wall, UPS, batteries and etc., so the existing rooms in both SCC and WADCC shall be renovated.

Siemens invited Diar to provide a technical and commercial offer for the engineering, procurement, and construction of the subject project.

- Architecture works
- Electrical Works
- Low current works
- Mechanical works (FF and plumbing)





DIAR PROJECTS

ARCHITECTURE PROJECTS

Hospitals and Health-Care Facilities

Al Mehwar Hospital

6th of October City, Giza, Egypt

Diar is the main Consultant of Al Mehwar Hospital that provided consulting Design and Engineering services for the whole project and construction supervision. Our team worked tirelessly to ensure that the hospital was designed and built to the highest standards to match the local and international codes, with a focus on safety, efficiency, and sustainability.

Al Mehwar Hospital located in 6 of October Cairo Egypt on a built-up area 28000 m2 consist of Basement + Ground + 5 floors



Design
Architecture
Package
as per
Construction
Requirements

MEP
Design
Package.

Tender
Evaluation

Construction
Supervision

Procurement
Support

Diar scope of work is to
perform and deliver the complete
Following items:



**AL MEHWAR HOSPITAL
MAIN ENTRANCE RECEPTION**



**AL MEHWAR HOSPITAL
MAIN ENTRANCE
WAITING AREA**
Proposal-02



**MAIN ENTRANCE
WAITING AREA**



AL MEHWAR HOSPITAL

**AL MEHWAR HOSPITAL
MAIN ENTERANCE
WAITING AREA
Proposal-01**



**AL MEHWAR
HOSPITAL - FIRST
FLOOR CLINICS**



**AL MEHWAR HOSPITAL
DENTAL CLINICS**



**AL MEHWAR HOSPITAL
GROUND FLOOR CLINICS**



**AL MEHWAR HOSPITAL
CLINICS WAITING AREA**

Patient Room
3
Floor

AL MEHWAR HOSPITAL
LIFT LOBBY



AL MEHWAR HOSPITAL
Exterior
Shot



AL MEHWAR HOSPITAL
Main Exterior Shot

Andalusia Hospital (New Heart Of Jeddah)

Andalusia group is launching Andalusia Jeddah New Hospital (New Heart of Jeddah) in 2023, The most modern smart hospital in Saudi Arabia - Jeddah and which presents a new concept of healthcare, healing and wellness.
size: 5000 sqft - 10,000 sqft



Andalusia Hospital in Jeddah is distinguished for its exceptional health experience that combines treatment and well-being for patients. In this hospital, the focus was on the entire patient's journey through the combination of innovative design, modern technology, and distinguished medical services in one place.

Andalusia Hospital (New Heart Of Jaddah)

The design features of the hospital also include the presence of 4,000 square meters of hanging gardens, a comprehensive entertainment system, and commercial services that meet the needs of patients. It also has integrated medical centers to improve patients' quality of life.



The project involved a comprehensive overhaul of the hospital's design and planning to incorporate smart technologies and advanced healthcare systems. Diar Consulting Group utilized their expertise in architecture, medical planning, and structural engineering to create a state-of-the-art facility that meets the highest standards of modern healthcare.



Diar Scope of work:

Diar Consulting Group successfully completed the re-design of the architectural, medical, and structural planning, MEP (Mechanical, Electrical, and Plumbing), and prepared the tender package for the Andalusia smart hospital in Jeddah. This remarkable achievement was accomplished within a record time of just 3 months.



Andalusia Maadi Hospital

Andalusia Group aimed to build a New Extension to Andalusia Hospital in New Maadi to be partially merged later with the existing hospital.

The new standalone building is on total plot area 600 sqm with 4,400 sqm built up area divided on 11 floors (Two Basement floors – Ground Floor – 7 floors – Roof Floor). New Andalusia general hospital after extension will contain 40 beds.



Diar Scope of work:

MEP Package Design and shop drawing

Diar was responsible for the design, installation, and maintenance of the mechanical, electrical, and plumbing systems in a building. These systems are essential to the safety and comfort of the occupants and must be properly designed and installed to function properly. including Electrical, Low Current System



Andalusia 6th October Hospital



Andalusia is developing its premises on the 6th. Of October City intends to make it a Prevailing treating/ healing facility and technology in the market with a Built Up- Area of 47,000 m2 and a capacity of 291 Beds and 100 Clinics.

The project endeavored to perform the detailed design for buildings including All MEP design packages in the building and site layout.



3D Exterior Shot



Diar Scope of work:

Mechanical:

- Update Mechanical Design Calculations
- Update Design brief.
- Stormwater.
- Gas System, if required.
- Water Supply Layouts & Details
- Bathrooms/Kitchens plans
- Fire Fighting Layouts & Details
- Drainage Layouts & Details
- HVAC Layouts & Details
- Equipment Schedules & Selection
- Final waste management plans
- Coordination with other services.





IVF Medical Center - Dr. Wael El Banna Hospital

Dr.wael Hospital located in maadi, Cairo Egypt .
Diar scope of work is to perform and deliver the complete following items:

Preparation of drawings and documents required for the extraction of construction license.

Structure Design Package.

MEP Design Package.

Architecture Design Package as per Construction requirements

Basic and detailed engineering of the firefighting System



**IVF Medical Center
Interior Shot**

Al Assema Hospital

Al Dokki, Cairo

This project located in AL Dokki, Cairo The client decide to make convert a residential building into a 10th floors hospital with total built up area of 4000 SQM



Diar scope of work:

- **Architecture Design Package as per Construction**
- **Requirements Prepare Soil Report.**
- **Structure Design Package.**
- **MEP Design Package.**
- **Preparation of drawings and documents required for the extraction of construction license**

Al Moosa Hospital

Al Ahsa - Saudi Arabia - Specialized Hospital for Rehabilitation and long-term Care

Al Moosa Specialist Hospital for Rehabilitation and Long-term Care this hospital is designed as a micro-village that embraces nature and the surrounding landscape. The master plan takes its inspiration from the Al-Ahsa region's natural landform of an oasis, while the building design fosters healing through its connections to nature.

- The hospital Consist of 220 beds, 10 operation rooms.
- The building consist of 25 floors, five (5) basements, 2 floors for services (ground and fourth Mezz floors), 18 Floors.
- Note that the above mentioned areas are for each floor.
- The total area far the hospital 50,250 m2



Diar scope of work:

- **Review Architecture Design Package as per Construction requirements.**
- **Review Structure Design Package.**
- **MEP Design Package**
- **Preparation of Drawings and documents required for extraction of construction license.**

Dr. Sulaiman Al Habib Al Khobar, KSA

Dr. Sulaiman Al-Habib hospital in Al-Khobar is about two million square feet, with a capacity of 600 beds, 100 of which are for in- tensive care of all kinds. This hospital in- cludes more than 450 clinics covering all specialties, and includes two towers, each consisting of 16 floors, with a height of more than 63 meters, and parking spaces exceeding 1,600 cars.



Diar scope of work is to Redesign and shop drawings for all MEP systems. The most challenge for this project that the client request to submit the shop drawings for the whole project in just 4 months including the composite plans.

Misr El Gadida Hospital



Diar Scope of work was to perform and deliver the Complete Following items:

- Architecture Design Package as per Construction requirements.
- Prepare soil Report.
- Structure Design Package.
- MEP Design Package.
- Preparation of drawings and documents required for the extraction of construction license.

Renovation Project

Dar El Shefaa Hospital

Dar-elshefa Hospital located in Abbasiya, Cairo Egypt.



Design:
Renovation for three floors including
Covert 27 beds patient rooms
floor to 57 beds and
Renovation scope.

MEP
Design
Package.

Basic and detailed
engineering of
the Dar Al Shefa
hospital
firefighting
System



**DAR-EL SHEFA HOSPITAL
ELEVATOR LOBBY**

ABC Hospital

Syria Street, El Mohandseen, Cairo

ABC Hospital was established in 2019 as the first hospital specialized in obesity and plastic surgeries in Egypt and Africa. The hospital also obtained the American accreditation from the Surgical Review Corporation (SRC) in 2019, and the accreditation was renewed in 2022 for the second time in a row to become the first hospital accredited by the corporation in Egypt and Africa.



Design
Architecture
Package
as per
Construction
Requirements

MEP
Design
Package.

Tender
Evaluation

Construction
Supervision

Procurement
Support

Al Zaytoon Specialized Hospital, El Amireya, Cairo

Al-Zaytoun Specialized Hospital contains most of the medical specialties, which are "heart - brain and nerves - digestive system and endoscopy - kidney medicine and surgery - orthopedics - joint and cartilage treatment - fracture clinic - internal medicine - urinary tract - general surgery - physical therapy for men and women - anti-smoking - rheumatism"



Diar Scope of work: Fire fighting and Fire Hose system Package Design and shop drawing

- Hydraulic calculations: Determining the water flow requirements and pipe sizes to ensure adequate coverage and pressure throughout the system.
- Sprinkler selection and placement: Choosing the appropriate sprinkler type (e.g., wet, dry, pre-action) and strategically positioning them based on the fire risk and occupancy.
- Pump and water supply selection: Sizing and specifying pumps and water storage tanks to meet the system's flow and pressure needs.
- Alarm and control system design: Integrating the fire fighting system with the building's fire alarm system for early detection and automatic activation.
- Standpipe and hose system design: Including stand pipes and fire hoses in strategic locations for manual firefighting by trained personnel.

Dar El Orouba

Nasr City, Cairo

Our Scope of Work was the Engineering Design Package

Design Architecture Package as per Construction Requirements

MEP Design Package.

Tender Evaluation

Construction Supervision

Procurement Support



Dar El Orouba Hospital is a legacy of medical Excellence, located in Nasr City, A Building consisting of 6 Floors

Al Sayeh Square HiCare

located in **Manama, Bahrain** on a built-up area 3000 m2 including 12 clinics, reception, laboratory,..etc.



Diar scope of work
Architecture Design
Package as per
Construction
requirements
MEP Design Package.

Linear Accelerator

Air Force
Military
Hospital

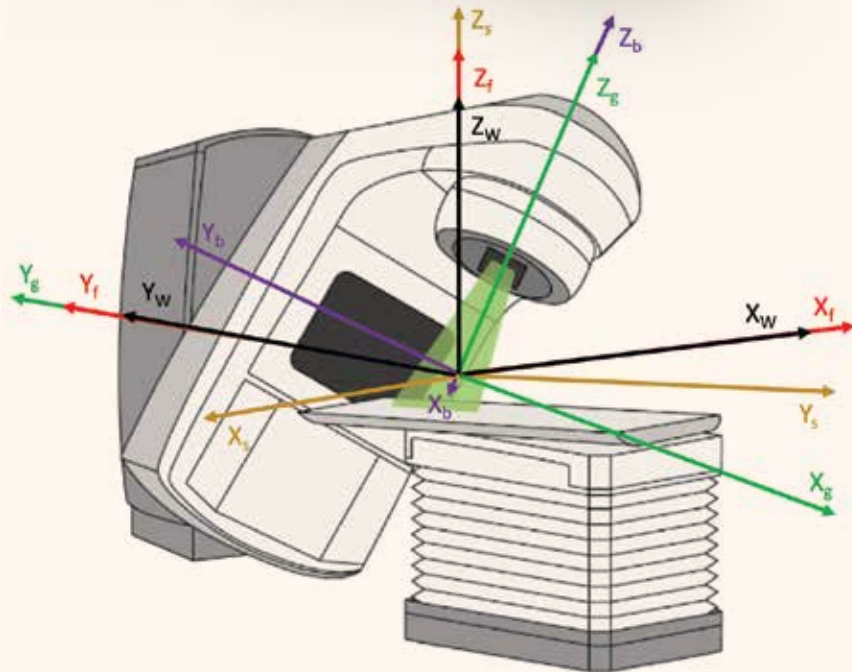
Moustafa
Kamel
Military
Hospital

Maadi
Military
Hospital

El-
Galaa
Military
Hospital

Wadi
El Nile
Hospital

Damietta
Building
Cancer Center
Hospital



Diar scope of work

EPC for full package of Architecture and MEP works for the Linear Accelerator room and related control room including the following:

- Architecture finishing
- HVAC
- Electrical
- Low Current systems

Leksell Gamma Knife®

Icon™

Elekta

Shaping a new era in
intracranial radiosurgery

Diar scope of work

Design all electrical, HVAC and control works for the Gamma Knife equipment and related control room including the following:

- HVAC
- Electrical



Accelerator

A large red tower crane is the central focus of the image, set against a clear, light blue sky. The crane's lattice structure is prominent, with a long horizontal jib extending from the top of a vertical tower. The crane is positioned on a construction site, with other parts of the structure visible in the background. The overall scene is industrial and captures a key piece of heavy machinery in use.

DIAR PROJECTS

INFRASTRUCTURE PROJECTS
Residential, Commercial, Educational

PROJECT LOCATION.

Jeddah Garden Walk is located in Jeddah, KSA. In strategic place with high visibility and accessibility from major roads 'King Abdul Aziz Road' and 'Ahmed Al Atas Road'.

JEDDAH GARDEN WALK - JGW

Mixed -Use District



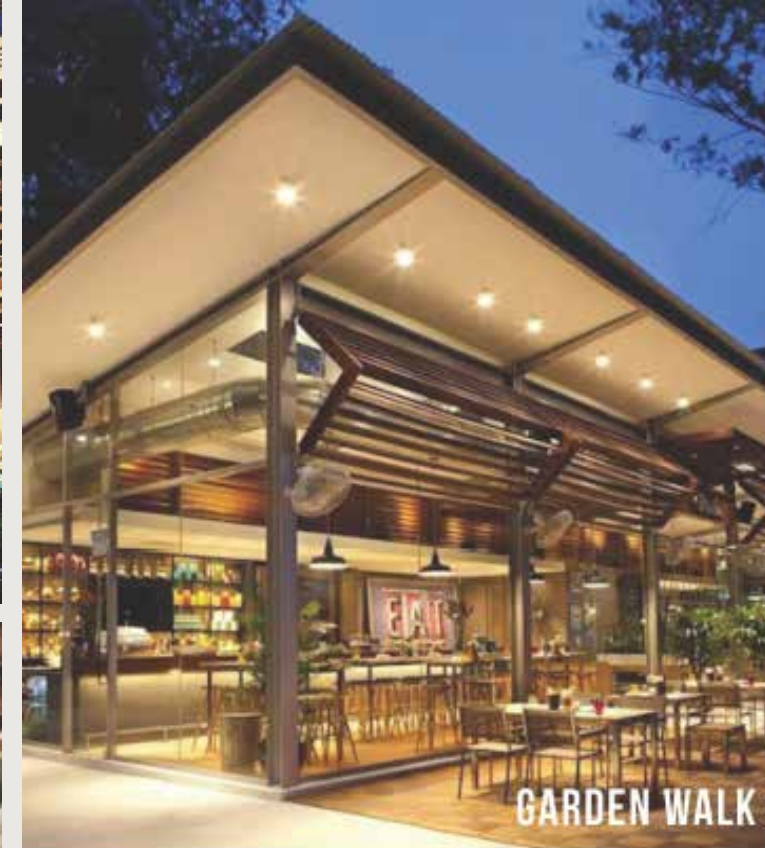
- JEDDAH GARDEN WALK brings Urbanity, a Strong Sense of Place, Unique Identity and Livability through Series of BEAUTIFUL GARDENS, Paseos, Landscaped Plazas, Courtyards and Terraces. These elements are integrated into a Cohesive, Harmonious and Sustainable Development which can phased incrementally and adaptable to evolving demands.

- The Idea of Gardens is carried through vertically with Green Roofs, Loggias, landscaped amenities and shaded terraces to create a beautiful Residential Community creating a true Mixed -Use District.

Design Elements

- Urban Destination
- Graden Walk
- Commercial Mixed Use
- Residential
- Adaptive Enviroment





WATER PLAY
INTERACTIVE WATER FEATURES



OUTDOOR DINING
CLIMATE CONTROLLED SPACES

Scope of work.

Complete design services carried out by Lead Consultant:

Concept Verification & Issuance of final Concept Stage:

1. Review and verification of existing masterplan concept design and advise with all findings that will affect the design development of the project.
2. Review and verification of existing Architecture concept design and advise with all findings that will affect the design development of the project.
3. Develop concept design for infrastructure works.
4. Develop concept design for structure works.
5. Develop concept design for MEP works.
6. Develop concept design for Security works.
7. Develop concept design for lighting works.
8. Develop concept design for signage works.
9. Develop concept design for information technology works.
10. Develop concept design for waste management works.
11. Develop concept design for conveyance system works.





Pearl Of Qatar Qatar

Residential

The Pearl of Qatar is a luxurious man-made island located off the coast of Doha, Qatar. It is a multi-billion dollar project that spans over 4 million square meters and features residential, commercial, and entertainment facilities. The project was initiated in 2004 by United Development Company (UDC) and has been developed in phases.

Pearl Of Qatar Qatar

Residential

The Pearl of Qatar is designed to be a self-contained community with its own infrastructure, including roads, bridges, waterways, and marinas. The island is divided into ten precincts, each with its own unique architectural style and theme. These precincts include Porto Arabia, Qanat Quartier, Viva Bahriya, Abraj Quartier, Costa Malaz, Floresta Gardens, Giardino Village, Madina Centrale, La Plage South Beach and La Plage North Beach.

The Pearl of Qatar is designed to be a self-contained community with its own infrastructure, including roads, bridges, waterways, and marinas. The island is divided into ten precincts, each with its own unique architectural style and theme. These precincts include Porto Arabia, Qanat Quartier, Viva Bahriya, Abraj Quartier, Costa Malaz, Floresta Gardens, Giardino Village, Madina Centrale, La Plage South Beach and La Plage North Beach.



Pearl Of Qatar Qatar

Residential

- Porto Arabia is the heart of the island and features a vibrant marina with luxury yachts and boats. It also has high-end retail stores such as Gucci and Louis Vuitton as well as fine dining restaurants overlooking the marina.



- Qanat Quartier is inspired by Venice with its canals and colorful buildings. It features beachfront apartments and townhouses with private beaches.

- Viva Bahriya offers beachfront living with stunning views of the Arabian Gulf. It has luxurious apartments with access to private beaches.

- Abraj Quartier is designed to be the commercial hub of the island with office spaces and retail stores.

- Costa Malaz features exclusive villas overlooking the sea. It also has a five-star hotel called Marsa Malaz Kempinski.

- Floresta Gardens offers lush greenery with parks and gardens. It has townhouses surrounded by greenery.
- Giardino Village offers Mediterranean-style villas surrounded by gardens.
- Madina Centrale is inspired by traditional Arab architecture with souqs (markets) selling local products.
- La Plage South Beach offers beachfront living with access to private beaches while La Plage North Beach offers beachfront apartments overlooking the sea.



The Pearl of Qatar also has world-class amenities such as schools, hospitals, mosques, parks, cinemas, spas, gyms as well as entertainment facilities such as bowling alleys and ice skating rinks.

Overall, The Pearl of Qatar is an ambitious project that aims to provide a luxurious lifestyle for residents while attracting tourists from around the world.



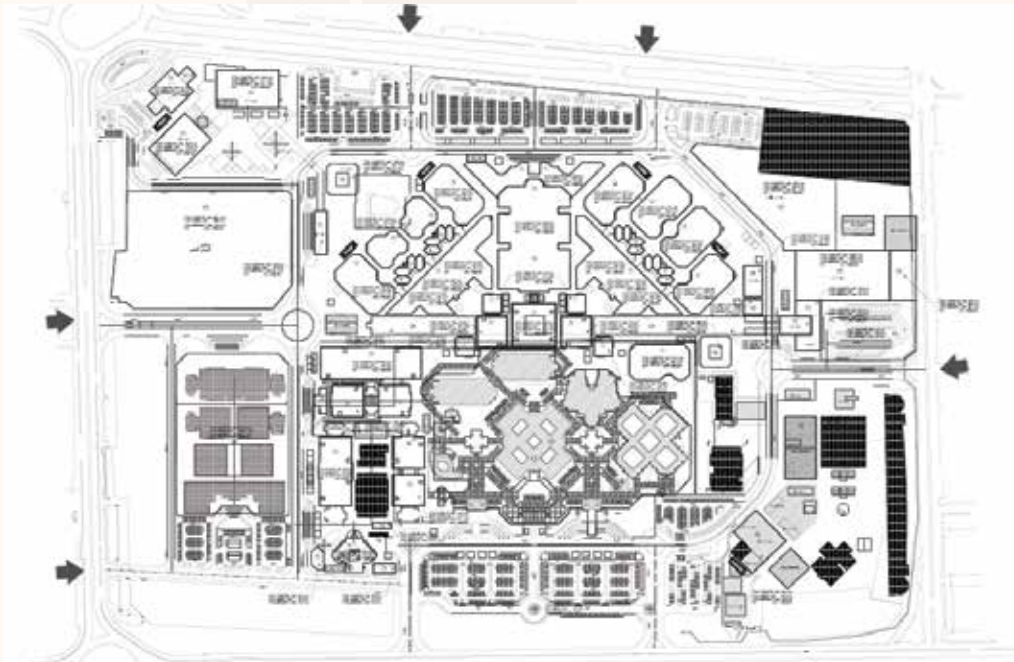
MOHARRAQ
Villas - Bahrain
Residential

King AbdulAziz University

Girls Faculties at Faisaliah

AL MANSOURA 2 BUILDINGS

King Abdulaziz University has two separate campuses; one for male students and another for female students, as required by the Islamic teachings.



Owner:
King Abdullaziz University
Location:
Al Maather, Riyadh, Saudi Arabia

King AbdulAziz University

Girls Faculties at Faisaliah

Diar scope of work (for 15 Buildings on Mansoura 2) is to perform and deliver the complete following items:

- 1- MEP Package Design and shop drawing (Mechanical, Electrical, Plumbing).
- 2- The technical specifications of the project



The Executive workshop drawings for the project, which consist of the following:

- 1- Workshop drawings for air conditioning works
- 2- Workshop drawings for fire fighting network works
- 3- Workshop drawings for sanitation and water supply
- 4- Workshop drawings for electrical works
- 5- Workshop drawings for light current systems (fire alarm - television monitoring network - data)
- 6- Coordination workshop drawings

For Buildings

H01, H02, H03, H04, H05, H06, H07, H08, H09, H10
H11, H12, H14, S02, S05

Neama Town Resort

Rabwat Neama, Sharm El Sheikh, Egypt



The Project Brief:

is located in Neama Bay, The beating heart of Sharm El Sheikh, in Rabwat Neama (Neama Hill) & elevated 100 meters above sea level, with a spectacular background of southern Sinai's mountains.



Offers the latest integrated real estate development project, incorporating top quality design landscape, highest level of service, professional state of the art techniques offering residential, commercial areas as well as a fully integrated residential area including studios, one and two bedrooms apartments and duplexes.

Client:

Promo Sharm - Real Estate Development

Location:

Ibn Sina Rd, Sharm Al Shiekh



Neama Town Resort

Rabwat Neama, Sharm El Sheikh, Egypt

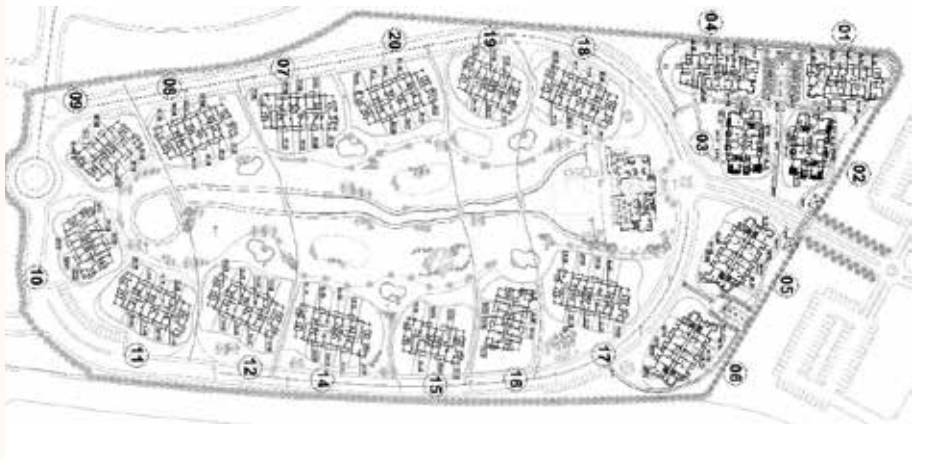


Scope of work:

Diar defined the scope of the telecommunication infrastructure works for Promo Sharm project and to establish the design criteria for the final design. It includes estimates for telephone lines and exchanges capacities.

Design work of the project will include the following:

- Provisional Space for exchange buildings according to Egypt Telecom company (ETC) requirements.
- Engineering forecast of telephone lines demand and estimating capacity of each Exchange.
- Distribution network according the selected alternative solution, including primary and secondary cable networks, fiber optic network (as applicable), as well as network distribution components (cross connect cabinets, distribution points, etc).
- Builder's work for the network including trenches, duct banks, manholes and hand holes.



Al Galala Hotel

Al Galala Mountain Resort, Al Ain El Sokhna

The Galala Hotel is located within the Galala Plateau project, the second largest national project approved by President Abdel Fattah El-Sisi in 2014, and supervised by the Engineering Authority of the Armed Forces, to be the capital of the city of Ain Sukhna and a tourist and entertainment gathering at the highest international levels.



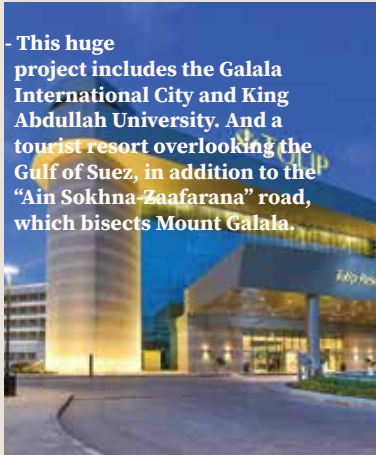
The coastal hotel, which was designed and implemented according to the latest engineering methods and architectural designs to be a masterpiece and a distinctive sign of the project, consists of 257 rooms, 34 suites, an entrance hall, waiting salons, a giant conference hall, 4 subsidiary halls, a main restaurant, a specialty restaurant, and a parking lot.



Al Galala Hotel

- The Galala Plateau area...a unique area...the magic of nature surrounds it from every direction, in addition to many of the ingredients that qualified it to become one of the major national projects whose implementation is supervised by the Engineering Authority of the Armed Forces

- This huge project includes the Galala International City and King Abdullah University. And a tourist resort overlooking the Gulf of Suez, in addition to the "Ain Sokhna-Zaafarana" road, which bisects Mount Galala.



The project area contain ground and six floors and the built up areas is about total commutative area 116000 m2



Diar Scope of work:

MEP Package Redesign and shop drawing Diar was responsible for the design, installation, and maintenance of the mechanical, electrical, and plumbing systems in a building. These systems are essential to the safety and comfort of the occupants and must be properly designed and installed to function properly. including Electrical, Low Current System.



AL Sheikha Noora Hotel

Umm Ghuwailina - Doha - Qatar

Royal Residential Apartments
(2B+g+M+7Typical+Stair-Case)

The Project Brief:

Diar Consultant was invited to make a value engineering for Nora Hotel

Diar Has Prepared a report to make evaluation for the MEP engineering to apply the following concept:

- Review the main concept for MEP Package (after review found that there is no generator feed this building for emergency loads ...etc.)
- Meet the Client requirement with minimum cost.

After Review the MEP Package we found fatal mistakes in design as per next sections

- Electrical.
- HVAC Systems
- Drainage System.
- fire protection system.
- Water Supply.

This report we hve prepared was an added value to notify the client with the correction way to apply the right concept for MEP packages (add generator for emergency loads...etc.) and reduce the modification cost during construction.

Client:

Sheikha Noora Jasim M .J Al Thani

Locaion:

Umm Ghuwailina ,Doha ,Qatar



Park Inn Hotel Salah, Oman

Umm Ghuwailina - Doha - Qatar



Project Brief:

The project is endeavored to perform the Value engineering and Construction supervision for the hotel apartments including MEP Value engineering packages in the building and site layout.

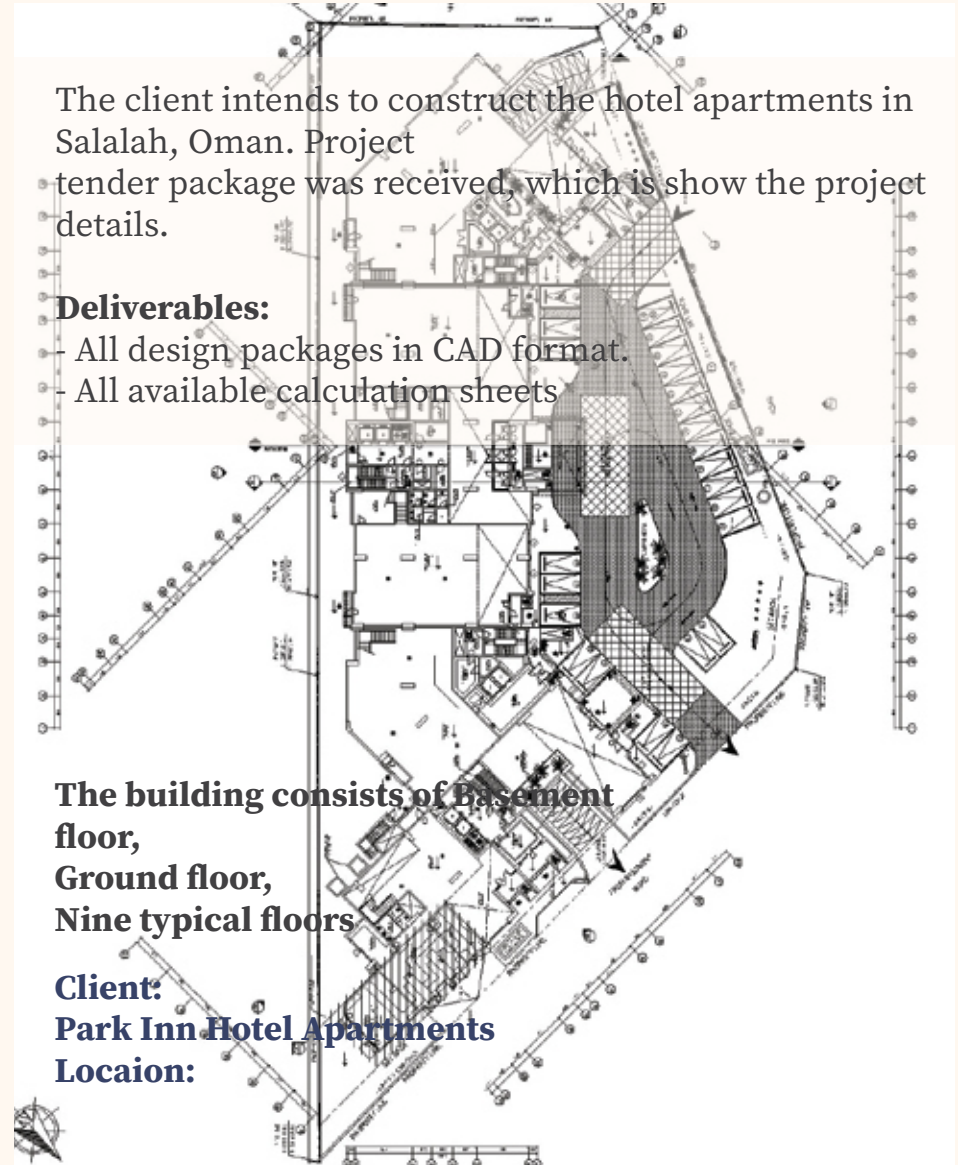
The client intends to construct the hotel apartments in Salah, Oman. Project tender package was received, which is show the project details.

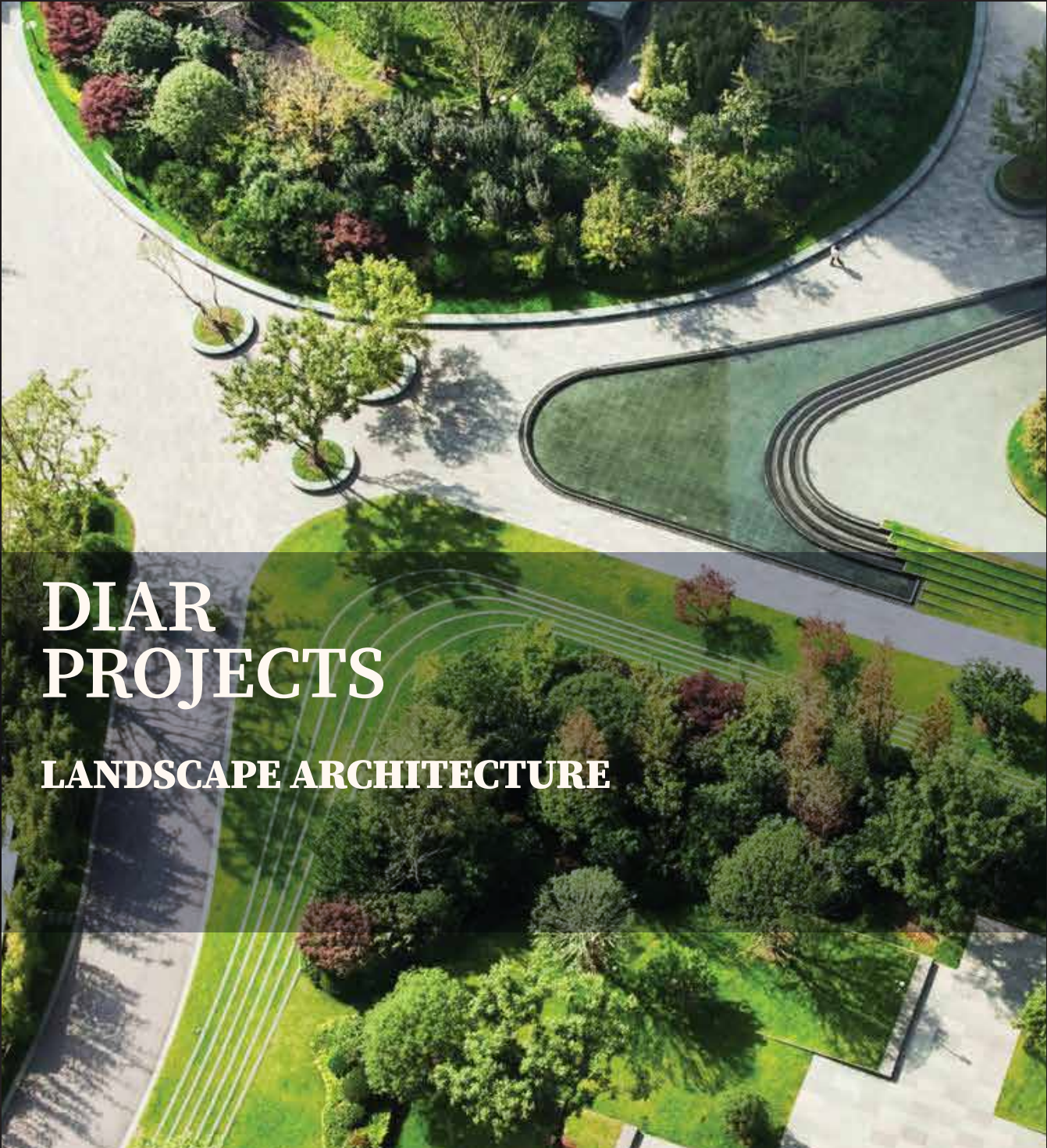
Deliverables:

- All design packages in CAD format.
- All available calculation sheets

The building consists of Basement floor,
Ground floor,
Nine typical floors

Client:
Park Inn Hotel Apartments
Locaion:





DIAR PROJECTS

LANDSCAPE ARCHITECTURE

Nubia Plaza, Assuit



Nubia Plaza, Assuit



Land Area :- 70,325 m²
Total BUA :- 150,000 m²
No. of Floors :- Basement + G + 2

Diar scope of work is to perform and deliver the complete following items:

Preparation of drawings and documents required for the extraction of construction license.

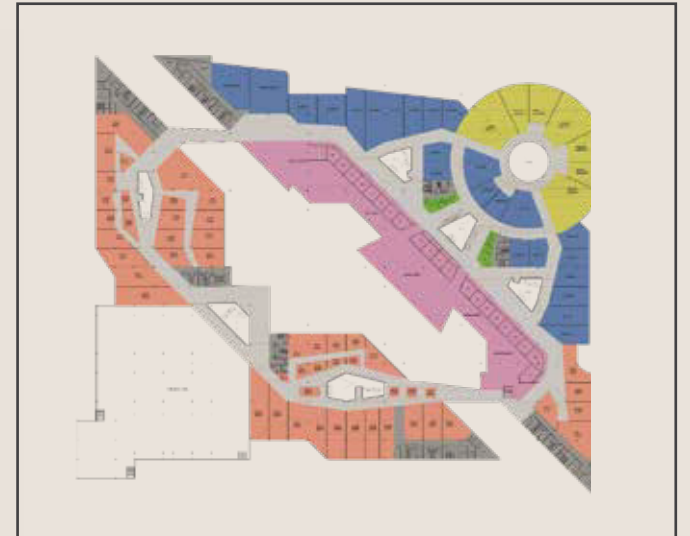
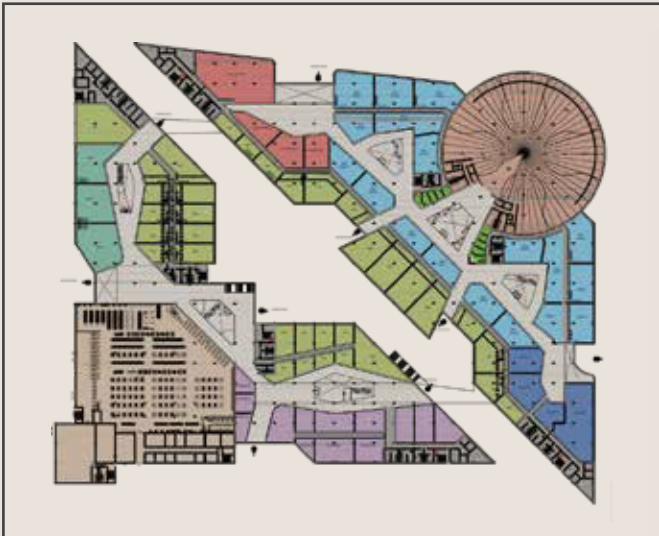
Structure Design Package.

MEP Design Package.

Architecture Design Package as per Construction requirements



Nubia Plaza, Assuit



Al Khohr Garden, KSA

Garden Masterplan 3D Shot

Residential Compound
Garden



Al Khobr Garden, KSA



Diar scope of work is to perform and deliver the complete following items:

- Architecture **Design** Package as per Construction requirements
- **Softscape** Package.
- **Hardscape** Package.



Rudaf Park, Taif, KSA

Located in the southern part of the city of Taif in Saudi Arabia, Arruddaf Park, also known as Al-Rudaf Park is one of the most beautiful parks in the city. Popular amongst tourists and locals alike, the park sprawls across a large expanse, and has a wide range of facilities and amenities, including musical fountains, small hillocks for rock climbing, separate playgrounds for children as well as fun-filled rides.



Diar Scope was the Low Current Engineering for the Project

- LCN Master Plan: outlines fo the overall layout and functionality of the LCN (Low Current Plan), including cable routing, equipment locations, and system specifications.
- Lighting Control System (LCS) Design: This plan details the configuration of the LCS, including control panels, dimmers, sensors, and communication protocols.
- Irrigation System Design: This document outlines the layout and operation of the irrigation system.
- Audio/Visual System Design: this document details the equipment selection, speaker/display placement, and wiring diagrams.

Owner: Ruddad Park
Location:
Taif, Saudi Arabia



Diar Lanscape Projects (KSA)



A photograph of a person's hands holding a pen, working at a computer workstation in a bright office. The computer monitor displays a detailed architectural floor plan with various rooms and corridors. A large, dark blue, rounded rectangular graphic is overlaid on the left side of the image, containing the word "Software" in a light teal, sans-serif font. The background shows other desks and computers, slightly out of focus, with large windows letting in natural light.

Software

Electrical
Software



Dx

MEP
Software



**Instrumen-
-tation**
Software



Process
Software



Piping
Software



Design



SUCCESS PARTNERS

Since our foundation, Diar has established successful business relationships with many international business partners, completing projects of massive scales and following through on its commitment to safety, value creation, optimized solutions and responsiveness. Diar's clients expand across the entire globe with landmark projects.



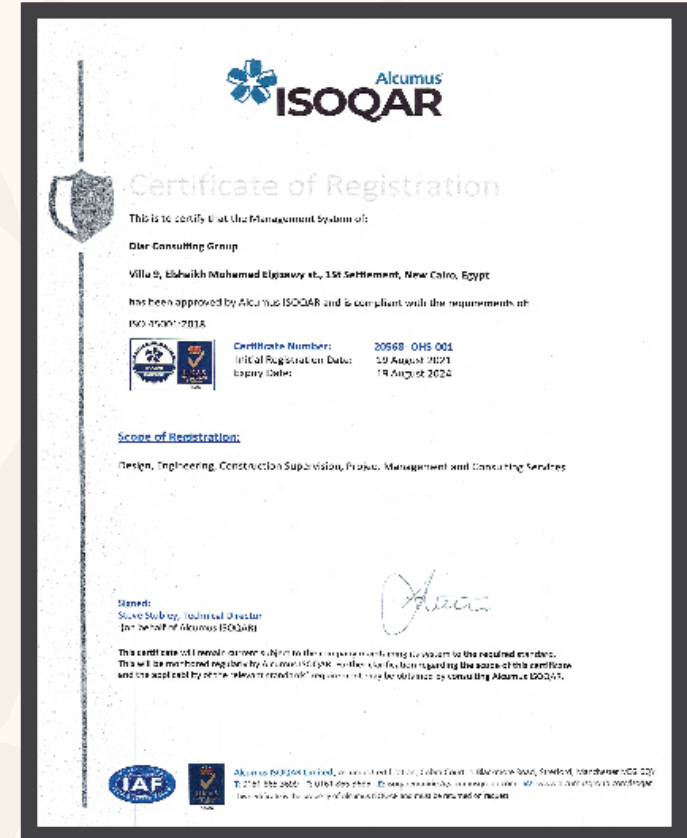
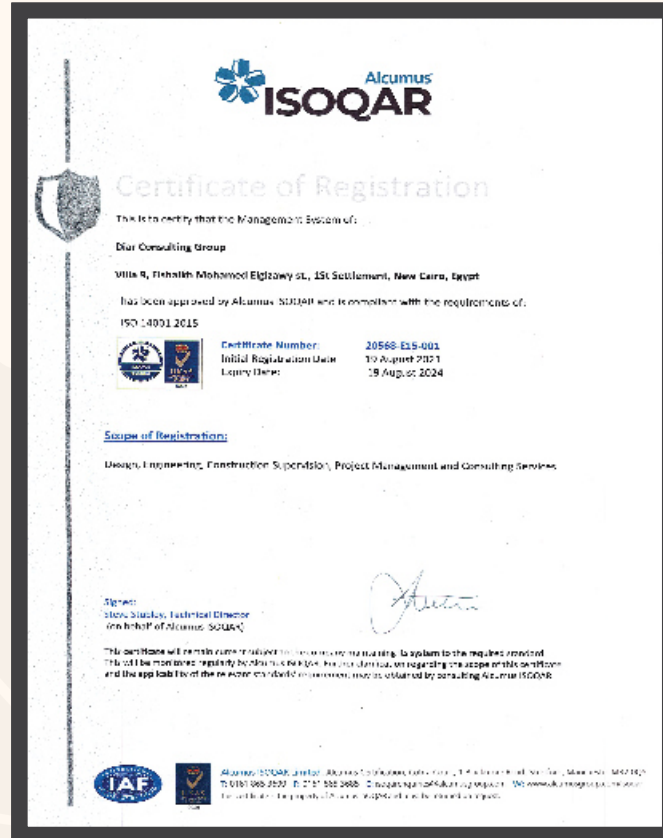
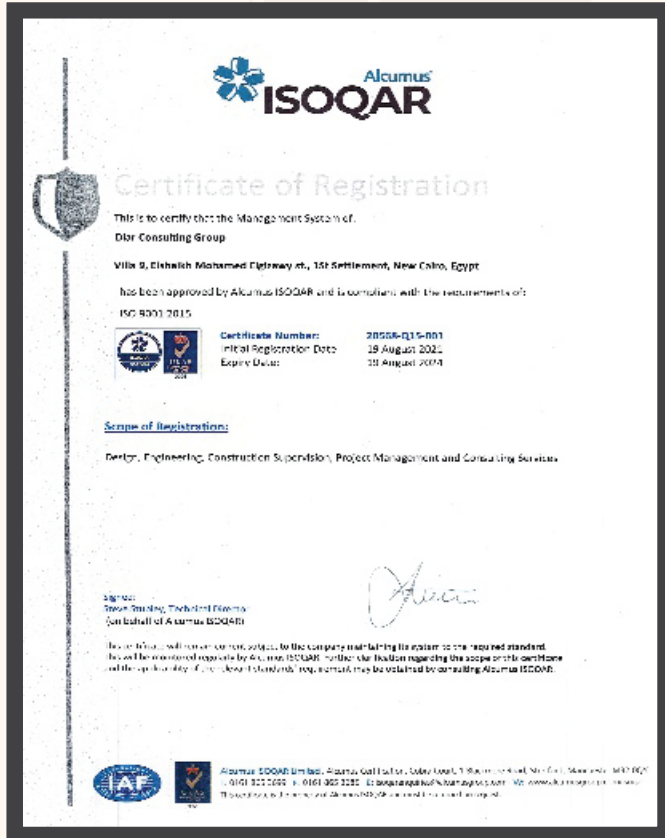
An offshore oil rig is shown at sunset, with the sun low on the horizon and the sky in shades of blue and orange. The rig's complex steel structure is silhouetted against the sky, and some lights are visible on the platform. The ocean is in the foreground, with gentle waves.

DIAR CERTIFICATIONS

Our Certifications

Out of international / national interest of the quality, environment and occupational health & safety and in line with Egypt's vision 2030 for achieving sustainable development and the company interest with the customers satisfaction and continual improvement, Diar has the leadership in obtaining certificates of international standards for:

- Quality Management Systems (ISO 9001)
- Environmental Management Systems (ISO 14001)
- Occupational Health & Safety Management Systems (ISO 45001)



Clients Appreciation



These certifications and Clients Appreciations demonstrate our commitment to excellence and expertise in various engineering disciplines, and showcase our ability to deliver high-quality and reliable engineering services to our clients.

Clients Appreciation



Clients Appreciation



OUR OFFICES MAP

Diar has successfully completed hundreds of projects all around the world, We operate throughout the surrounding region using the combined resources to serve public and private clients in the infrastructure, buildings and Oil & Gas sectors..



Algeria



Cairo
(Head Office)



KSA



Bahrain



UAE



Oman



Oghanda



South Africa



Singapore



EGY Add. (Head Office)
Villa 9, El Shaikh Mohamed El Gizawy
street Zone 9 - 1st Settlement,
New Cairo - Cairo, Egypt

UAE Add.
RAKEZ free zone, RAK, UAE

Algeria Add.
REGUS ALGERIA (GADOUCH PROJECT
58 LOGTS LOT 33, 35, 36,
Algiers, 1600)



Visit Our Website



☎ MOB: 0 106 642 4403


📞 TEL. / FAX: +2 2345 4411


✉ Info.diar@diargroup.com

🌐 www.diargroup.net

 facebook.com/ConsultingDiar

 Diar Consulting Group

 Diar group

 instagram.com/diarconsultinggroup/

 twitter.com/diarconsulting

Thank You