



POO ROFILco

BUILDINGS AND
INFRASTRUCTURE

With extensive capabilities that serve our diverse end markets, we can work on a project from concept to completion and beyond.

"We're more than just engineers; we're **problem solvers**. Our goal is to understand your unique challenges and provide **tailored solutions** that drive your business forward."

Your Success Business Partner

Table of Content

Diar Consulting Group is a Consultant Group Established in January 2009 to provide Consultant & Engineering Services primarily for the infrastructure, buildings, and Oil & Gas projects located in Egypt and elsewhere in the Middle East and Africa.

1 ABOUT DIAR
Our Mission, Vision, Values
Why Diar
Our Team Culture

2 OUR CORE VALUES
Integrity, Accountability, Diligence,
Preseverance, and Discipline

3 OUR BOARD OF DIRECTORS
A Board od Directors with over 40 years of experience in Different engineering fields

4 OUR ORGANIZATION CHART
It shows the internal structure of Our Organization.

5 OUR ENGINEERING DISCIPLINES
Our Engineering Fields and Specialities in addition to Engineering deliverables.

6 DIAR MINING, ENERGY GENERATION CAPABILITIES

7 OUR PROJECTS
Building, infrastructure, Industrial, and Oil & Gas and PMC Projects

8 DIAR OLD PROJECTS
Diar Old projects in Egypt and the MenA Region.

9 PARTNERSHIPS
Our Partnership with Bechtel

10 CERTIFICATES
Our Certifications and Clients Appreciation

11 OUR OFFICES MAP
Diar Offices Map in Egypt and the MENA Region

12 CONTACT INFO
Social Media Accounts, Website and Our Contacts

About Us

Diar Consulting Group is a Consultant Group Established in January 2009 to provide Consultant & Engineering Services primarily for the infrastructure, buildings, and Oil & Gas projects located in Egypt and elsewhere in the Middle East and Africa.



While maintaining a Relentless focus on safety and an uncompromising standard of quality. Regardless of a project's size or location, DIAR delivers Consistent, superior results, which our customers have come to expect. We are confident in our capabilities, our talented workforce, and the Long-term Growth of the markets we serve.

Today we continue our legacy of excellence with a unique business model that offers a more complete supply chain solution to our customers.

With extensive capabilities that serve our diverse end markets, we can work on a project from concept to completion and beyond. Regardless of a project's size or location, DIAR deliver consistent, superior results, which our customers have come to expect.

Our Mission

To be the leading provider of innovative and sustainable consulting and engineering solutions for infrastructure, buildings, Oil & Gas, Industrial and Mining projects in the MENA Region, driving economic Growth and Development.

Our Vision

To shape the future of infrastructure, buildings, and Oil & Gas, Industrial, Mining projects through our innovative solutions and unwavering dedication to excellence.



Why Diar... ?

At Diar we partner with our clients to **provide superior quality solutions that deliver – or Exceed - the results** they are seeking and give them peace of mind that their operations are running smoothly.

Our Core Values

At DIAR, we're guided by [8] Core Values that fuel our success and shape our Interactions with each other and our clients.

We have a reputation for innovation and a **proven track record for success, having completed numerous major projects**, both national and international, on spec, on time and on budget.



OUR
CORE VALUES



Meet Our Board of Directors

Our Team Culture

Every day we work to maintain the highest level of our personnel's competence through regular training, organizational tests and the implementation of proven human resource management methods.

The members of our team have gained their experience while working on many projects and designing solutions for **international corporations as leaders in their industries.**

Meet Our Board of Directors



HANY NABIL

MANAGING DIRECTOR,
PH.D, M.SC

The Managing Director of Diar (The leading Consultant Engineering firm servicing primarily the Infrastructure, buildings and oil & gas sectors in the MEA region). Since 2011



Eng. Hany Nabil

- WorleyParsons
- Dar Al-Handasah-Dar
- (Hill International) American construction consulting firm

Through his extensive work experience, he has acquired management and design expertise, as well as a solid understanding, practical and flexible approach in conforming to both local and international codes and standards (IEC, EN, BS, IEE, NFPA, API, IEEE, ICAO, etc....).



Hany Nabil holds a Ph.D. in Electrical Engineering from Boston University, USA



A Master's degree and a Bachelor's degree in Electrical Engineering from Ain Shams University, Egypt.



DBA Degree from BSS university Swizerland



OSAMA FAWZY

OPERATION MANAGEMENT
DIRECTOR (UAE)

30 years of experience (QHSE/ Operations and General Manager) , General management and Operations management



MAHMOUD NABIL

ENGINEERING DIRECTOR,
PH.D, M.SC

Mr Mahmoud is an Engineering Director with experience spanning 18 years in the design and management engineering sector



Eng. Mahmoud Nabil

- WorleyParsons
- El sewedy Electric Transmission and Distribution (EETD)
- (Hill International) American construction consulting firm

He has possessing management skills and design obtained during his employment in one of the top international engineering design firms.



Mahmoud Nabil holds a Ph.D. in Communication and Electronics from Boston University, USA



A Master's degree in Communication and Electronics from Ain Shams University, Egypt.



Consultant at the Egyptian Engineers Syndicate in Communication and Electronics Field.

Meet Our Board of Directors



SAMIR ANWAR

I&C DIRECTOR

Engineering design (Preliminary/conceptual, FEED or Detailed Design) for Instrumentation & Control Systems (PLC, F&G, DCS, SCADA, ESD) for Offshore/ Onshore OIL&GAS facilities, refineries, and oil & gas processing plants. Also, large utilities and mega infrastructure projects including Water and Wastewater pumping stations, power plants and ports marine projects, and associated Industrial and services buildings.



AHMED BAKR

MINING SPECIALIST

Eng. Ahmed More than 30 (Thirty) years of experience in the field of Exploration, Production, Testing of phosphate mining (open cast and underground tunnel's production) and ROM (Run of Mine). Performing my duties in compliance with International Codes, Standards and common engineering practice. Coaching talents, review and analysing data / info to propose complete technical solutions and alternatives including 2 Years at EMRA (Egyptian Mineral Resources Association)



GAMAL DAWOOD

ELECTRICAL DIRECTOR

Thirty Eight years of experience: Six of them in the operation, maintenance, and construction of electrical instrumentation systems equipment the industrial, military, and domestic fields, and Thirty-Two years in the field of Engineering, Engineering Management, Procurement, Construction, Installations, Commissioning, and Operation of the Oil and Gas fields/plants (upstream &



TAREK ADLY

HSE DIRECTOR

Tarek has over 45 years of experience in Oil and Gas, Plastic, and Detergents Industries. He has worked extensively in the areas of water treatment, chemical laboratories, Corrosion Management, safety, fire prevention, environment protection, security, food, and industrial hygiene, risk assessment and management, training, and auditing.



TAREK AKL

PROCESS DIRECTOR

Tarek has experience in Project Management and Engineering Management, also he has experience in procurement management, quality assurance, HSE management, project control, interface management, proposal management, Risk Management, loss privation and overall construction management.



HASSAN MOHAMED

MECHANICAL DIRECTOR

(45) years' experience in the design and project management of Oil/Gas, Refineries, Petrochemical and Power plant projects. Highly experienced in the areas of Mechanical Installation, Pre-Commissioning and Commissioning of Oil/Gas Refineries, and Petrochemical projects Responsible for overall management and direction of the Company's operations in Saudi Arabia. Control and direction of Project Management, Engineering and Technical Support Services.



MAHMOUD SALAMA

MBA, PMP PROJECT MANAGER

more than 20 years experience in Major Infrastructure and Development Projects Budgets up to \$2.1BN | Oversaw Key Projects, Including Doha Port Redevelopment and Khalifa Avenue, Enhancing Operational Efficiencies and Compliance with International Standards



MOHAMED AZZOUNY

CIVIL DIRECTOR

More Than 20 Years of Experience in Civil Engineering Structure Division



BASEM SANAD

BUILDINGS AND INFRASTRUCTURE DIRECTOR

Bassem has over 18 years experience in the MEP experiences in multi-skills projects (UAE & Qatar & Egypt)



MOHAMED OSAMA

PROJECT CONTROL

He has extensive experience by working on many projects inside and outside Egypt



MOHAMED FAROUK

ARCHITECTURE DIRECTOR

Over 10 years of overall experience Designing, Developing Concept & Construction drawings. Extensive experience in designing and managing construction activities



AHMED KHAIRY

PIPING SECTION HEAD

Total 15 years work experience in industrial sectors, Power Plants, water desalination and Gas separation with multinational EPCM companies

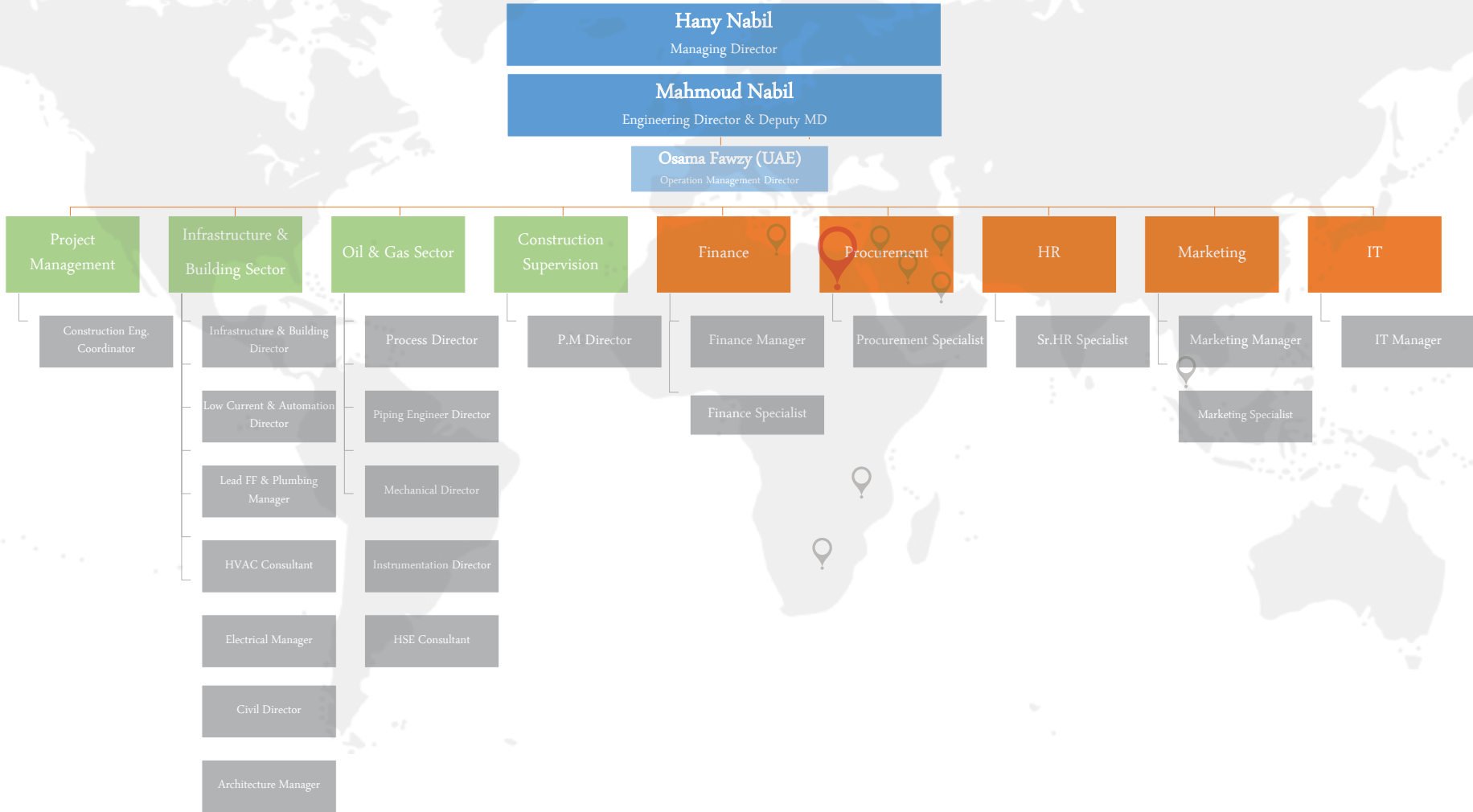


© Viktor
Mácha

Making
your Vision
become a **Reality**
is our Specialty

Company **ORG** Chart

Company Organization Chart Infrastructure & Buildings Engineering Sector

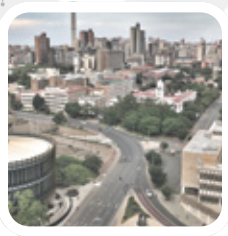


Company **ORG** Chart

Company Organization Chart Our Branches and Offices in the MENA Region

Hany Nabil
Managing Director

Mahmoud Nabil
Engineering Director & Deputy MD



West Africa

Mohamed Hassan
Business Development Manager

Burkina Faso

Bassirou Koussoub
Director

Issa karambir
Business Development Manager

UAE

Osama Fawzy (UAE)
Operation Management Director

Head Office (Egypt)

Maged Yehai
Business Development Manager

Ahmed Bakri
Proposal Engineer

Libya

Ibrahim El-Regoubi (Lybia)
Director

Hassan El-Hawwary
Business Development Manager

South Africa

Eyad EL-Tahtawy
Business Development Manager

Algeria

Essam Amjad Rezaiguia
Business Development Manager

Singapore

Ahmed Samir
Business Development Manager

Diar Consulting Group

Business Fields

**Infrastructure &
Buildings**

**Industrial and
Oil & Gas**



Business Fields

DIAR services including **Engineering, procurement, and construction** to meet our client satisfaction with **high quality and minimum cost**. DIAR believes that our quality is the main target for our team to be a competitive company in the world.



CONSULTING



EPC CONTRACTS



PMC MANAGEMENT

Engineering Disciplines

Diar has a diverse range of engineering fields. Having expertise in those engineering Various fields can provide a comprehensive solution for various projects and industries.

OIL & GAS



PROCESS



PIPING



INSTRUMENTATION



PROCESS SAFETY STUDIES (HAZOP, HAZID, SIL, PSM, GAP ANALYSIS, ETC.)



ELECTRICAL



MECHANICAL



CIVIL & STRUCTURE

BUILDINGS



ARCHITECTURE



INTERIOR DESIGN



LANDSCAPE



CIVIL



MEP



HSE

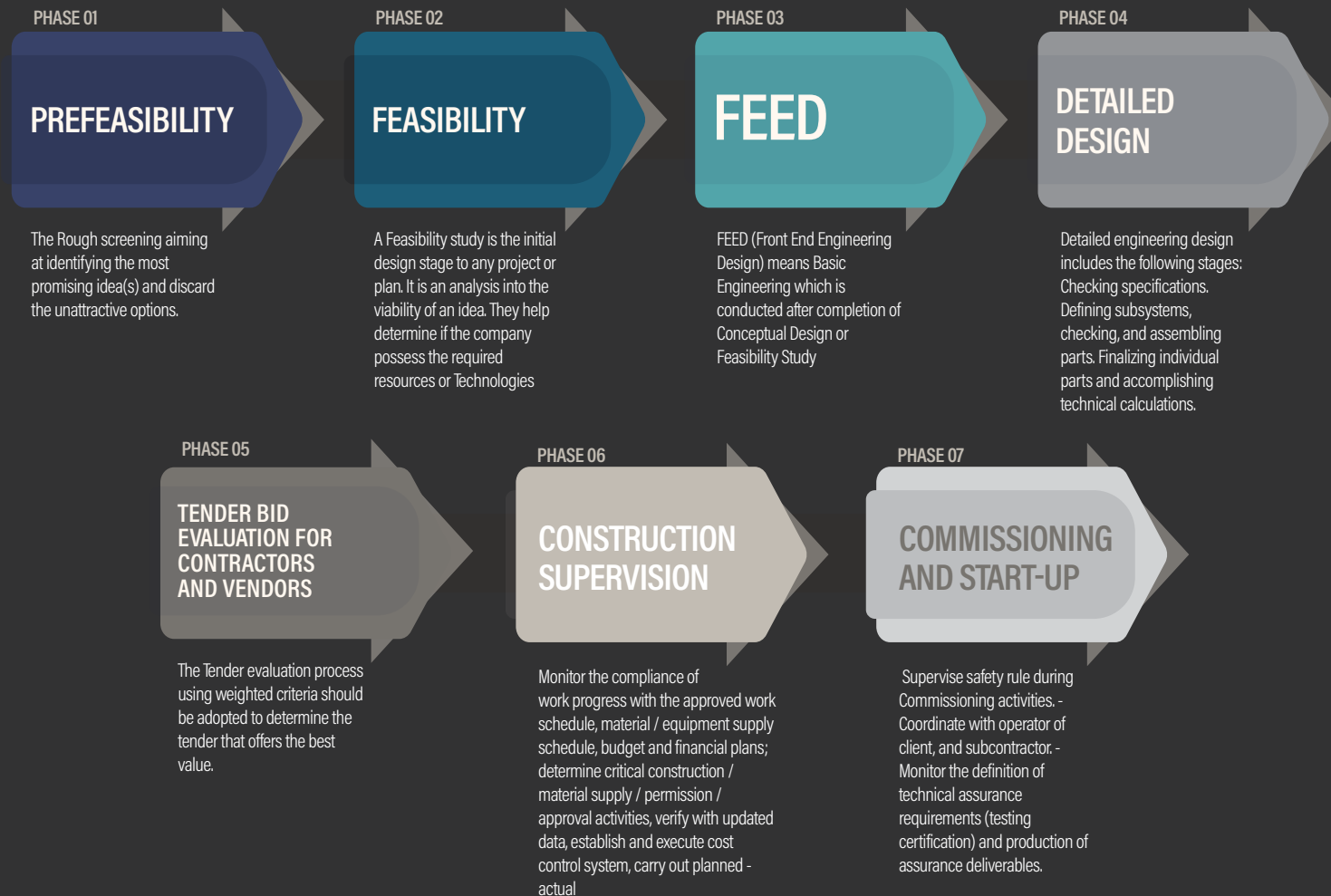


LOW CURRENT

Engineering Projects Phases

Engineering Consultant for Oil&Gas Industrial, Buildings ad Infrastructure

DIAR services including Engineering, procurement, and construction to meet our client satisfaction with high quality and minimum cost. DIAR believes that our quality is the main target for our team to be a competitive company in the world.





With extensive capabilities that serve our diverse end markets, we can work on a project from concept to completion and beyond.

Your Success
Business Partner
شركاء النجاح

We have a reputation for innovation and a proven track record for success, having completed numerous major projects, both national and international, on spec, on time and on budget.



Engineering Disciplines-Deliverables

1. PROCESS

- PFD.
- P&ID.
- Process equipment specifications.
- Equipment datasheets.
- HYSIS simulation.
- Simulation reports.
- HAZOP & HAZID.
- HIPS.
- Process Philosophy.
- Basis of Design.

2. PIPING AND PIPELINE:

- General arrangement layouts.
- Plot plan.
- Piping isometrics (ISOs).
- Plant 3D modeling.
- Piping specifications for materials, paintings, etc.
- Stress analysis.
- Pipeline profile.
- Standard and special supports design.
- Construction support.
- Laser Scanning & 3D Modeling



Engineering Disciplines-Deliverables

3. INSTRUMENT & CONTROL ENGINEERING

- Field instrumentation
- Process controls system such as: pneumatic, hydraulic, electronic & microprocessor (PLC & DCS), etc....
- Safety related systems; ESD, F&G and HIPPS, etc...
- SCADA systems such as fiber optic, micro wave, satellite, etc....
- Custody transfer metering systems
- Pipeline management systems
- Automatic tank gauging systems
- Oil & Gas wellhead control systems
- Asset Integrity Management For ICSS and - plant Control Components
- Subsea Hydraulic network analysis
- Subsea Power distribution analysis

4. MECHANICAL

- Tanks detailed and fabrication drawings.
- Static Equipment detailed and fabrication design. (Vessels, tanks)
- Machinery equipment specifications, datasheets & material requisitions.
- Cooling Load Estimation.
- Duct Design.
- Equipment selection.
- Chilled Water piping.
- Pump head & flow calculation.
- Water tanks calculation.
- Rain water and drainage design.
- Electrical Water Heaters design.
- Designed as a green building for LEED Certification.



Engineering Disciplines-Deliverables

7. ARCHITECTURE

Architecture and design consultancy focusing on strategy, architecture and design for corporate, public sector and education clients for new build, refurbishment and heritage projects.

Our team has wealth of experience and comprises architects, interior designers, analysts, technicians, graphic designers and communication experts.

We cover all architectural work stages, adding further value with our extensive analytical tools and experience.

- Architectural Design
- Interior Design.
- Detailed Design.
- Working Drawing.
- 3d Modeling & Rendering.
- CAD Conversion/As Built Drawings.
- Interior Design.
- Detailed Design.
- Working Drawing.
- 3d Modeling & Rendering.
- CAD Conversion/As Built Drawings.

8. CIVIL

Our designers and technicians can provide quality engineering, and a broad base of practical experience for your project. Presently, we can undertake the following:-

Civil...

- Foundation design, analysis and details for equipment/machinery, storage tank, bunkers and silos, bridge,
- Industrial plant structures, tunnels, ducts, utility towers, galleries and walk ways, pipe racks and general structures.
- Reinforcement detailing and bar bending schedules.
- RCC drawings, shuttering plans
- Water supply and distribution plans and details
- Reservoirs & water tank details.



Engineering Disciplines-Deliverables

REVIT SUPPORT

- Diar Consulting Group is a group of (BIM Managers, BIM Consultants, BIM programmers, Technical support, Specialists, Autodesk certified professional users).
- Diar are ready to provide (BIM Training, BIM Technical support, BIM Implementation)
- Methodology: BIM Consultancy, BIM Modeling for BIM users and companies.
- Also we are publisher on Autodesk store.
- Diar Offers a Free BIM Presentations for the new users & companies.
- Our services include Autodesk Revit and Autodesk Navisworks.

- Manage software products including but not limited to incorporating new version releases and customization of the product
- Manage the implementation of supporting software for ,BIM
- Evaluate new BIM related software and technologies



9. LANDSCAPE

- Site survey and analysis
- Program of needs
- Conceptual design sketches and models
- Landscape construction plans
- Plant lists and specifications
- Material specifications
- Lighting plans
- Signage and wayfinding plans
- Sustainability reports
- Construction details and specifications (shop drawings)
- 2d & 3D models and renderings
- As-built drawings

10. MEP

- Mechanical drawings and specifications: Detailed plans for HVAC systems, ductwork, piping, equipment selection, and control systems.
- Electrical drawings and specifications: Comprehensive plans for power distribution, lighting, communication systems, and fire alarm systems.
- Plumbing drawings and specifications: Detailed plans for water supply, drainage, waste disposal, and sanitary systems
- 3D models and simulations: Visual representations of the MEP systems and simulations of their performance.

Engineering **Disciplines-Deliverables**

HSE

1. HSE Plan which identifies potential hazards, assesses risks, and defines control measures to minimize them.
2. Risk Assessment also includes recommendations for risk mitigation and control.
3. Safe Work Procedures (SWPs) They include information on personal protective equipment (PPE), tools and equipment use, and emergency procedures.
4. Environmental Impact Assessment (EIA)
5. Emergency Response Plan
6. Training Materials
7. Permits and Approvals
8. Monitoring and Reporting

The specific HSE engineering deliverables required for a project will vary depending on the project's size, complexity, and location.

Out of international/national interest of the quality, environment, and occupational health & safety and in line with Egypt's vision 2030 for achieving sustainable development and the company's interest with the customer's satisfaction and continual improvement, Diar has the leadership in obtaining certificates of international standards for:

These certifications demonstrate Diar's commitment to meeting international standards in these areas and ensuring the well-being of its employees, customers, and the environment. By obtaining these certificates, Diar aims to enhance its reputation, attract more customers, and contribute to Egypt's vision of sustainable development.

- **Quality Management Systems (ISO 9001)**
- **Environmental Management Systems (ISO 14001)**
- **Occupational Health & Safety Management Systems (ISO 45001)**

QUALITY, ENVIRONMENTAL, HEALTH & SAFETY MANAGEMENT SYSTEM





PMC

**Project management
consultancy**

Project management consultancy

1. PLANNING ASPECT

- Develop Master time schedule
- Monthly update, and one month look ahead
- Develop monthly report
- Weekly report for all staff including the critical activities should be finish next week, and the delayed activities for current week
- Develop reports for cause of delays and how to crash
- Develop crashed time schedule if needed

2. COST CONTROL ASPECT

- Develop S- Curve, and expected cash Flow
- Develop cost control system, as log for all subcontractors and all activity will performed in house and estimate cost for each items
- Identify target cost
- Update cost estimate and calculate variance of cost
- Make cost analysis and develop corrective actions
- Develop monthly cost report
- Create all cost indexes, SPI, CPI, ETC, EAC
- Analysis all variation orders

3. RESOURCE MANAGEMENT ASPECT

- Resource allocated for activities (equipment & labor & material)
- Managing the resource over project life

4. CONTRACT ADMINISTRATION ASPECT

- Review contract terms and identify all obligations
- Identify financial and contractual commitment
- Develop delay analysis and time impact analysis
- Prepare all contractual letters
- Respond for all consultant contractual letters
- Monitor and alarm for all potential claims
- Prepare claim document and develop all claims



DIAR PROJECTS

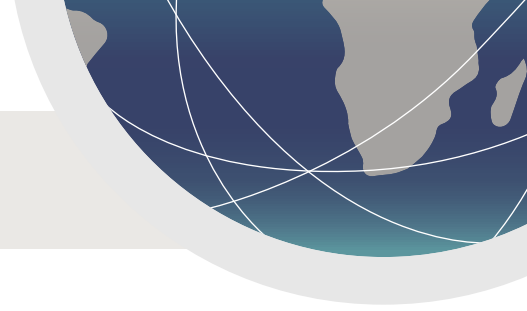
Architectue Projects

PMC (PROJECT MANAGEMENT
CONSULTING)





Project management consultancy



Buildings and Infrastructure

Project Management Consulting Projects

1- **El Shohada New Hospital - El Shohada City**

The establishment of the New Shohdaa Hospital on an area of approximately 21,000 square meters, with a financial appropriation of half a billion pounds, as the Undersecretary of the Ministry of Health indicated that the designs for the hospital are being prepared to start implementation.

2- **Dry Port 6 th October**

The company intended to develop, construct and operate, and maintenance of the 6th of October Dry Port ("DP6"), the first inland dry port in Egypt in the city of 6th of October, west of Cairo (signed on 09 September 2021).

New SHOHDA Hospital **Construction Project**

The establishment of the New Martyrs Hospital on an area of approximately 21,000 square meters, with a financial appropriation of half a billion pounds, as the Undersecretary of the Ministry of Health indicated that the designs for the hospital are being prepared to start implementation.



Diar Scope of Work was the Project (PMC)

- Consultant of the main contractor.
- Main coordinator between ministry of health, owner consultant and project Contractor and designer.
- Designer reviewer for all disciplines as of architectural, civil and MEP.
- Supervisor consultant for all construction works at site.

The new hospital will be established with a financial appropriation of half a billion pounds on an area of approximately 20,800 square meters, which is scheduled to be included in the comprehensive health insurance system, and to provide services to the people of the city of Shah-daa and all the 27 villages of the center.

- Project development and planning:

Defining project scope, developing budgets, establishing schedules, and identifying potential risks.

- **Design management:** Reviewing architectural and engineering plans, ensuring compliance with regulatory standards.

- Procurement strategy development

- **Permitting and approvals**

- **Construction management**

- **Schedule and budget monitoring**

- **Quality control and risk management**

- **Communication and stakeholder management**



Dry Port 6th October

FIRST DRY PORT IN EGYPT

OCTOBER DRY PORT COMPANY (A JOINT STOCK COMPANY ESTABLISHED IN EGYPT TO FINANCE THE DESIGN)

The company intended to develop, construct and operate, and maintenance of the 6th of October Dry Port ("DP6"), the first inland dry port in Egypt in the city of 6th of October, west of Cairo (signed on 09 September 2021).

The Project is the City's "trigger investment" under EBRD Green Cities Framework 2 Window 2 ("GrCF2 W2") formally initiating 6th of October's participation in the programme and enabling the start of the development of the Green City Action Plan ("GCAP") with the New Urban Communities Authority ("NUCA") for the 6th of October City.



Project Overview:

The project involves the supply and installation of GOEC (General Organization for Export and Import Control) laboratories within the October Dry Port located in 6th of October City. The specific location of the project is Building no 3, Floor 3, which has a total area of 700 m2. The floor has been divided into different zones to accommodate the specific requirements of the laboratories, offices, and service corridors.



Dry Port 6th October

FIRST DRY PORT IN EGYPT

Project Scope of Work:

The scope of work includes demolition, masonry works, flooring and wall tiles installation, installation of wooden doors, marble flooring, false ceiling, and mechanical and electrical works. These tasks encompass clearing the area, constructing walls, installing flooring and wall tiles, setting up wooden doors, incorporating marble flooring, installing false ceilings, and implementing HVAC and electrical systems.

USD 176 Million to Construct First Dry Port at 6th of October City



Diar Scope of Work was the Project (PMC) - Project Management Consultant





DIAR PROJECTS

Urban Design Projects

Residential Compound Master Plan in Burkina Faso



Given Burkina Faso's unique climate and cultural context, there are several key design considerations to keep in mind when planning your residential compound:

Project Components

01. Residential Areas:

Villas: Luxurious standalone homes with private gardens and ample outdoor space.

Apartments: Modern and stylish units in low-rise or high-rise buildings, offering a variety of sizes and layouts.



02. Community Facilities:

Recreational Facilities: Parks, playgrounds, sports fields, and other outdoor recreational areas.

Clubhouse: A central hub for social gatherings, featuring a swimming pool, gym, spa, and event spaces.

Commercial Areas: Retail shops, restaurants, cafes, and other commercial establishments to cater to residents' daily needs.



Educational Facilities: Schools and nurseries to provide quality education within the compound.

Healthcare Facilities: Clinics and medical centers to ensure easy access to healthcare services.

03. Infrastructure and Utilities:

Road Network: A well-planned road network to facilitate smooth traffic flow within the compound.

Utilities: Reliable water, electricity, and sewage systems.

Security Systems: Advanced security measures to ensure the safety of residents and their property.

Master Plan for Your 3,000,000 sqm Residential Compound

Project Components

Central Park (100,000 sqm):

- A large, open green space with diverse plant life, including native trees, shrubs, and flowering plants. A central lake or pond with fountains and water features.
- Walking and jogging paths, cycling lanes, and picnic areas.
- Children's play areas and outdoor fitness equipments.

Neighborhood Parks (200,000 sqm):

- Smaller parks scattered throughout the compound, providing green spaces for each neighborhood.
- Playgrounds, sports fields, and community gardens.

Water Features (50,000 sqm):

- A network of canals, streams, and ponds, creating a serene and visually appealing landscape.
- Waterfalls, fountains, and reflecting pools.

Residential Compound Master Plan in Burkina Faso

Project Components

Green Corridors (100,000 sqm):

- A network of green corridors connecting different parts of the compound, providing shade and reducing noise pollution.
- Planted with trees, shrubs, and groundcover.



Architecture Style

Bricks are increasingly recognized for their role in sustainable architecture, particularly in facades. A brick facade combines traditional aesthetics with modern sustainability goals, offering a number of environmental, economic, and performance benefits.

1. Energy Efficiency
2. Durability and Longevity
3. Low Environmental Impact
4. Carbon Sequestration
5. Aesthetic and Biophilic Benefits
6. Sourcing and Recycling Considerations
7. Water Management



INTERIOR MATERIALS

The way bricks are incorporated into a building's architecture can directly influence the amount of natural light a space receives. Certain brick design strategies can optimize the flow of light and ensure it reaches interior spaces effectively:

Brick Courtyards and Atriums: In large buildings, brick-clad courtyards or atriums can serve as open spaces that allow natural light to penetrate deeper into the structure. These areas act as light wells, bringing daylight to areas that would otherwise be too dark or enclosed.

Residential Compound Master Plan in Burkina Faso

Project Master Plan

This concept will create a tranquil and luxurious environment, balancing natural beauty and modern amenities.



The City of Life: A New Era in Healthcare

A Visionary Medical Hub in Sharjah, UAE



Key Features
 Innovative
 Mushroom-Shaped
 Towers
 Cutting-Edge Medical
 Technology
 Sustainable Urban
 Design million square
 meters (Phase 1)
 Total Built-up Area: 8

The City of Life, the Capital of Health (Medical City) will be launched in Sharjah on a land area of one million square meters out of a land area of 4 million square meters (a permitted above-ground floor area of 8 million square meters) with an annual rent for the land of 240 million dirhams.

Location:

Sharjah, UAE

Land Area: 1 million square meters (Phase 1)

Total Built-up Area: 8 million square meters

Project Components

The available area is 4 million square meters:
 The Whole Project Components:

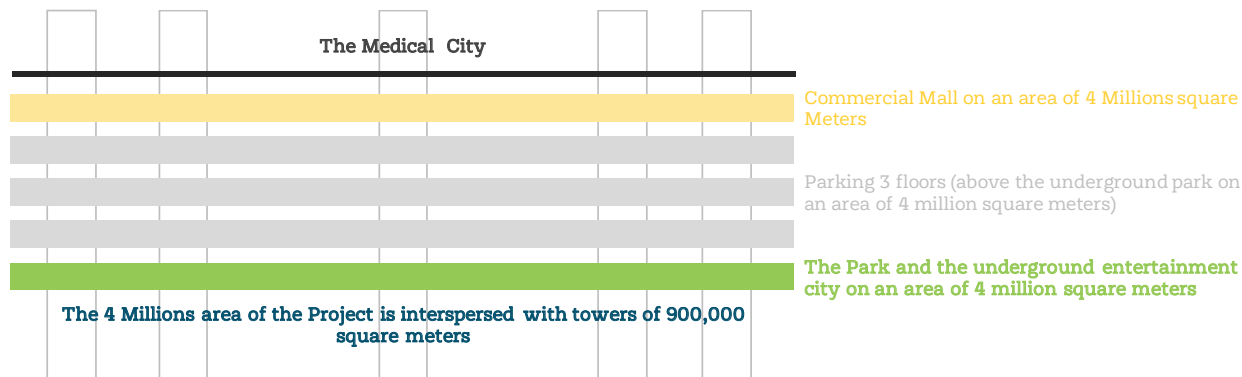
The available area is 4 million square meters (4 square kilometers) The proposed city for the hospital is one million square meters with a capacity of 33 thousand beds

A Residential city of villas for doctors and nurses is required on an area of 2 million square meters

A hotel city is required on an area of one million square meters

The park and the underground entertainment city on an area of 4 million square meters

Parking 3 floors above the underground park on an area of 4 million square meters interspersed with towers that can accommodate 180 thousand parking spaces, each floor has 60 thousand parking spaces) A commercial mall above the parking spaces on an area of 4 million square meters interspersed with towers of 900,000 square meters



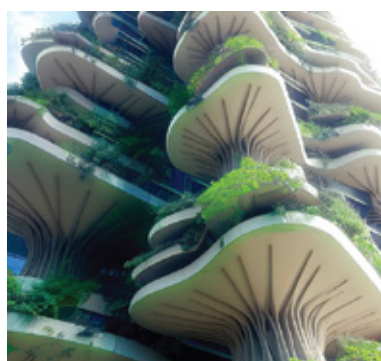
The City of Life: A New Era in Healthcare

A Visionary Medical Hub in Sharjah, UAE

The available area is 4 million square meters:

Under The Ground

- 1) **A commercial mall** above the parking spaces on an area of 4 million square meters interspersed with towers of 900,000 square meters
- 2) **Parking 3 floors** (above the underground park on an area of 4 million square meters) interspersed with towers that can accommodate 180
- 3) **The Park and the underground entertainment city** on an area of 4 million square meters



The Main Elements of the Medical City

1. Towers

First,
Above ground (900,000 square meters) 3 floors each floor 300,000 square meters and underground 10 floors each floor 300,000 square meters so that the area of 10 floors is 3,000,000 square meters and the floor area of the towers is 3,600,000 meters Square
Cost 19,500,000,000 dirhams
5,342,465,753.42 dollars

Second,
Water and Green areas (The Ground Floor between the Towers)
On an area of 700,000 square meters between the towers, a garden, water areas and a walkway between the towers (Above this floor is an open garden of 700,000 square meters between the towers)
At a cost of 210,000,000 dirhams
57,534,246.57 dollars.

Third,
Reception
A floor with a height of 6 meters with an area of 700,000 square meters connected to all buildings and contains restaurants, cafes, shops, pharmacies, laboratories and a medical mall with everything the visitor needs and connected to all buildings
At a cost of 2,100,000,000 dirhams
575,342,465.753 dollars

2- Car parking

3 floors with a height of 12 meters and an area of 3,000,000 square meters with a capacity of 66,600

3- The mall

A floor with an area of one million square meters

The City of Life: A New Era in Healthcare

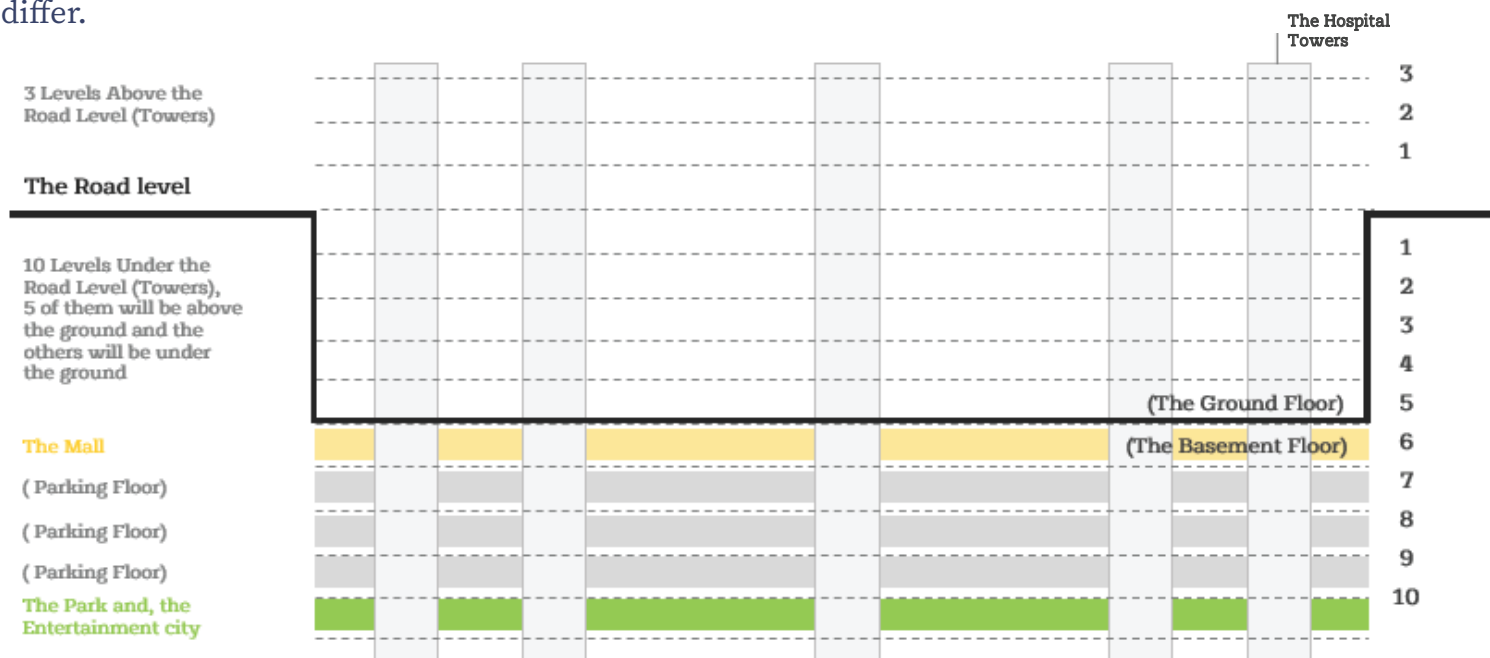
A Visionary Medical Hub in Sharjah, UAE

There will be 4 floors of each tower underground and at the same time 10 of them below road level. The towers may be at the same height and number of floors or they may differ.

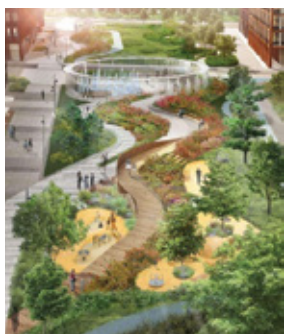
At a cost of up to 60,000,000,000 dirhams
16,438,356,164.383 dollars

The cost of the room is 900,000 dirhams

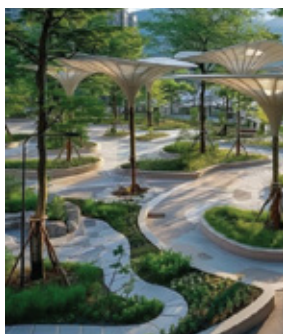
Room rent is 1000 dirhams per day, so it will be 360,000 dirhams per year, including electricity, cleaning and management, as is the case in hotels, considering that the costs of this are 30%, so the net room rent is 700 dirhams per day and 21,000 dirhams per month and 252,000 dirhams per year, so that payment will be made in less than 4 years and within a maximum period of 6 years



Zoning and Functional Integration for the Urban Zones City



Connectivity and Circulation



Landscape Design

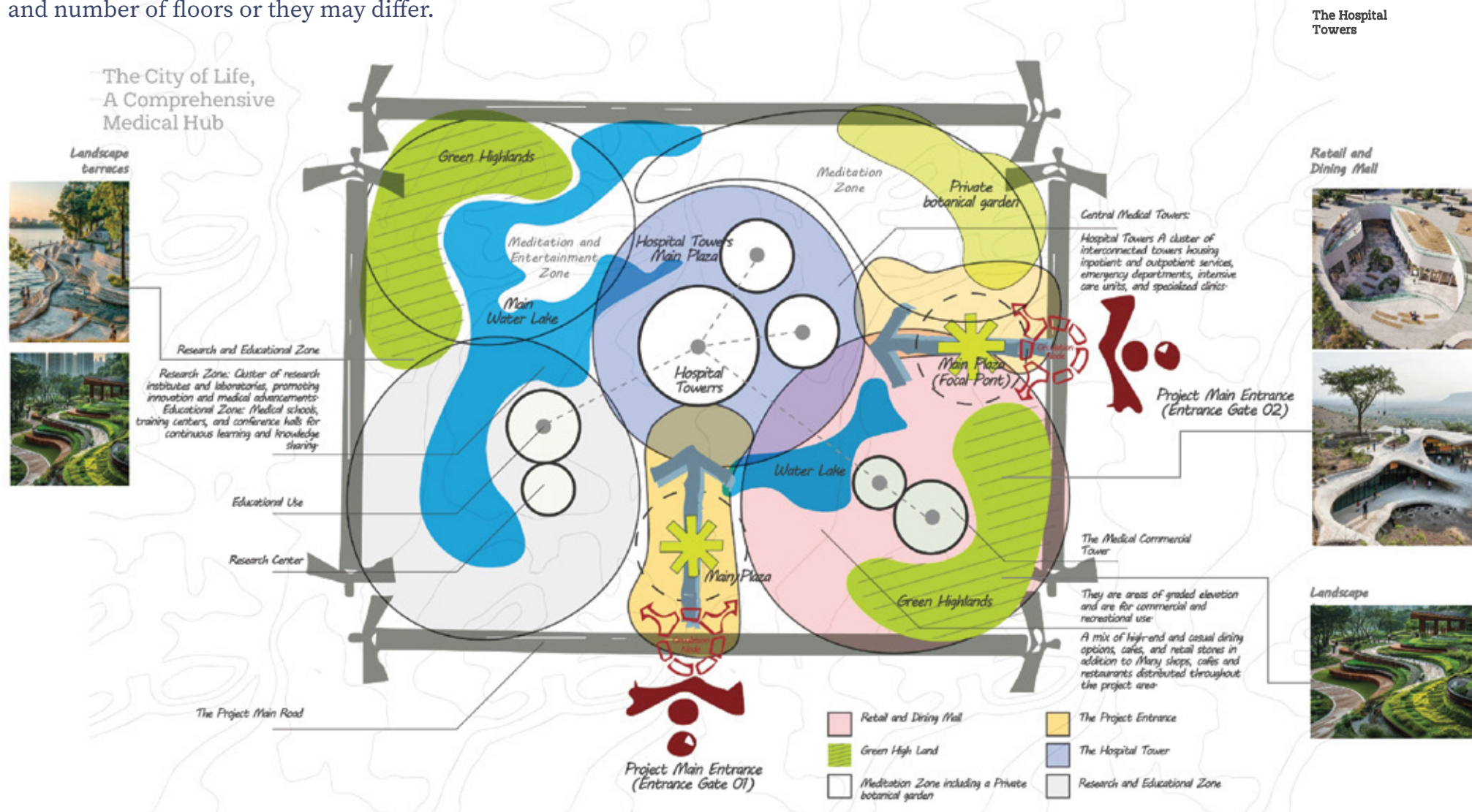


Support Facilities

The City of Life: A New Era in Healthcare

A Visionary Medical Hub in Sharjah, UAE

There will be 4 floors of each tower underground and at the same time 10 of them below road level. The towers may be at the same height and number of floors or they may differ.



The City of Life: A New Era in Healthcare

A Visionary Medical Hub in Sharjah, UAE

There'll be mainly 7 Towers, 3 of them are the main Hospital Towers

- 1- 3 Towers are the Hospital Towers: A cluster of interconnected towers housing inpatient and outpatient services, emergency departments, intensive care units, and specialized clinics.
2. Research and Innovation Center Tower: A dedicated space for medical research, clinical trials, and technological advancements.
3. Medical Education Center: A facility for medical education and training, including lecture halls, laboratories, and simulation centers.
4. The Medical Commercial Tower: including the Medical Mall, Retail and Dining, Entertainment Zone.



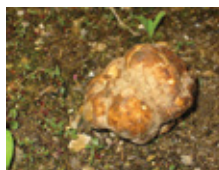
The Main Hospital Towers Zoning Plan (Reference Plan)

MAIN TOWER: GROUND FLOOR

- EMERGENCY
- XRAY DEPT
- DIALYSIS
- CIRCULATION
- ADMIN
- OTHER CLINICS
- DOCTORS
- LOUNGE



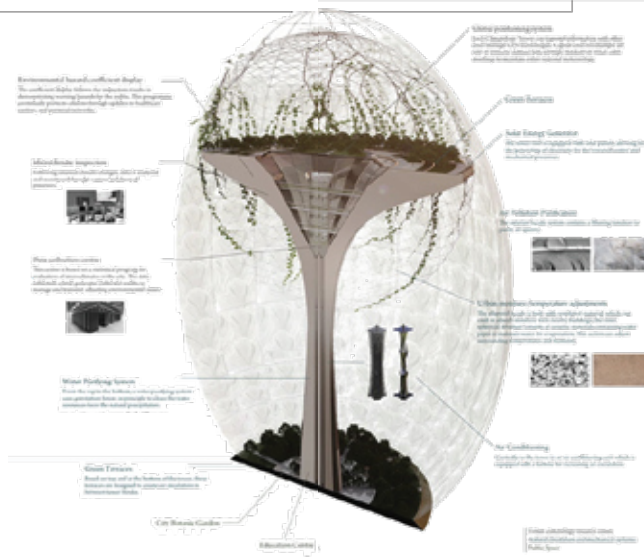
MAIN TOWER: FIRST FLOOR



THE MAIN IDEA OF THE TOWERS DESIGN FOR THE PROJECT IS INSPIRED BY THE TRUFFLE PLANT.

Inspirational Exterior Design for

Some of the city towers exterior design will be inspired by the artistic shape of Truffle Plant (One of the mushroom plant types)





DIAR PROJECTS

Architectue Projects
**Administrative, Residential, and
Commercial**

RUNNING PROJECTS IN KSA

Y Office Tower, Saudi Arabia, Lusail

PRIME Company is developing its premises on the Saudi Arabia and intending to make the mentioned offices tower as a Prevailing offices facilities and technology in the market. It is located in lusail city; The project information and statistics are given below;

Name of the Project : Y OFFICE TOWER

Owner : PRIME company

Location : Saudi arabia

Type of Development : 6 Basements + Ground +mezzanine + 25 floors + roof

Built Up- Area : 27,122 m2 excluding roof areas

The project is endeavored to perform the detailed design for the floors including Architectural, civil and MEP design packages in the building and site layout.



RUNNING PROJECTS IN KSA

Y Office Tower, Saudi Arabia, Lusail



Scope of Work:

Stage 01– Concept Design stage

Stage 02- Detailed Design Stage

Architectural, and Civil Engineering

Stage 03- Tender Documents Upon the approval of detailed design package, the Consultant shall proceed to prepare the tender documents package for review and approval by Medical Group team.



OPEN
CO-WORK-
ZONE

DOUBLE
HEIGHT
OFFICE

RUNNING PROJECTS IN EGYPT

WADICO New Head-Quarter Building



Built up Area
1391 m2

Project scope

The consultancy services are including the following:
Concept interior design
Detailed Design Development.
Tender document "Drawings & BOQ & Specs".
Tender bidding consultancy.
Supervision and handing over.

PDesigning the interior of the new administrative building for the WADICO for Mineral Wealth and Oil Shale. It aims to create an efficient, functional, and aesthetically pleasing workspace that maximizes space utilization and integrates architectural, mechanical, electrical, and safety systems. The design will prioritize energy efficiency, safety, and operational compliance with industry standards.

Project scope

The "Design Services" form the Concept to Tender stages as per the requirements of the client mentioned in this offer.

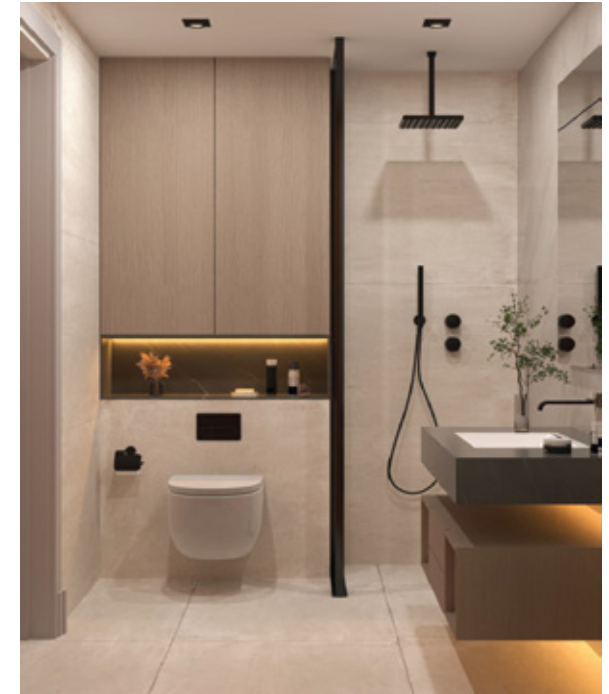
RUNNING PROJECTS IN KSA

WADICO - Interior Design for Admin Building

Scope of Work:

The consultancy services are including the following:

- **Concept interior design**
- Detailed Design Development.
- Tender document “Drawings & B OQ & Specs”.
- Tender bidding consultancy.
- Supervision and handing over.



Name of the Project: Administrative Building for WADICO for Mineral Recourses and Oil Shale.
Owner : WADICO for Mineral Recourses and Oil Shale.
Location : EGYPT
Type of Development: Interior design for an administrative office building. Built up Area : 1391 m2



RUNNING PROJECTS IN EGYPT

WADICO - Interior Design for Admin Building



Designing the interior of the new administrative building for the WADICO for Mineral Wealth and Oil Shale. It aims to create an efficient, functional, and aesthetically pleasing workspace that maximizes space utilization and integrates architectural, mechanical, electrical, and safety systems. The design will prioritize energy efficiency, safety, and operational compliance with industry standards.



The space is characterized by a neutral color palette with warm wood tones and soft beige accents. The dining table, with its sleek design and inviting chairs, is the focal point of the room. The artwork on the wall adds a touch of artistic flair, while the pendant lights above the table provide ambient lighting. Overall, the design creates a calming and elegant atmosphere, perfect for enjoying meals and entertaining guests.

RUNNING PROJECTS IN KSA, RESIDENTIAL

Z 12 (Al Wadi Palace)

Al Wadi Palace Developing its premises on Saudi Arabia and intending to make the Palace as a Prevailing facilities and technology in the market.

Built Up- Area: 46,382 m2

Owner : Z12

Location : Saudi Arabia

Client: METICULOUS



The palace space including the following sections:

1. Son private zone 1.
2. Son private zone 2.
3. Son private zone 3.
4. Sons Common area.
5. Sons Golf Academy.



FAMILY ZONE

- 1 Sons Entertainment
- 2 Sons Villa 3
- 3 Sons Villa 2
- 4 Education Building



PRIVATE ZONE

- 1 His Private Suite
- 2 Car Display
- 3 Male Guest Villa
- 4 Sport Area
- 5 Golf Clubhouse



PUBLIC ZONE



RUNNING PROJECTS IN KSA, RESIDENTIAL

Z 12 (Al Wadi Palace)



Scope of work:

Project scope the "Design Services" from the schematics to Tender stages as per the requirements of the client mentioned in this offer.

Moreover, the required offer to include the estimated Design Stage duration – (project schedule) in weeks, The consultancy services are including the following:

- Schematic design.
- Detailed Design Development.
- Tender stage "Drawings & BOQ & Specs".



Clean Lines and Geometric Shapes:
The building features simple, geometric forms like cubes and rectangles, characteristic of modern architecture.

RUNNING PROJECTS IN KSA, RESIDENTIAL

Z 12 (Al Wadi Palace)



Natural Materials: The use of stone and wood in the building's facade creates a connection to the natural environment, aligning with organic design principles.

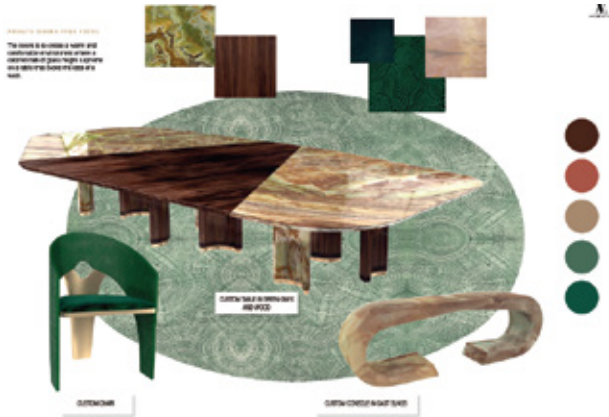


The interior design in this image evokes a sense of underwater wonder. The use of teal and turquoise hues, combined with organic shapes and patterns, creates a serene and sophisticated atmosphere. The centerpiece, a stunning backlit bar with a wave-like design, adds a touch of drama and elegance. The overall design is both modern and timeless, inviting relaxation and contemplation.



RUNNING PROJECTS IN KSA, RESIDENTIAL

Z 12 (Al Wadi Palace)



The centerpiece is a stunning dining table with a marble top and wooden base, creating a dramatic focal point. The velvet chairs and the unique side table add a touch of elegance and comfort. Overall, the design exudes a sense of opulence and timeless style.



The bedroom's interior design is a blend of luxury and modern style. Warm tones, plush furnishings, and a unique headboard create a cozy and elegant space.

This interior design mood board showcases a warm and inviting living room concept. The color palette features earthy tones like terracotta, beige, and deep teal, creating a cozy atmosphere. The furniture choices, including a plush sofa and a unique coffee table, blend modern and traditional elements. The rug, with its intricate pattern and rich colors, serves as a focal point. Overall, the design exudes a sense of comfort and sophistication.



Luxurious, Eclectic, Serene, Sophisticated, Opulent, Modern, Artistic



RUNNING PROJECTS IN YEMEN, RESIDENTIAL

Al Beyaa Al-Mostafweya Yemen-Hadrmaut



Developing its premises on the Yemen and intending to make the compound as a Prevailing residences facilities and technology in the market. It is located in Hadramout city; The project information and statistics are given below;
Name of the Project : ALBEYAA ALMOSTAFAWEYA
Owner : Al SAKEENA
Location : Yemen
Type of Development : residential compound
Built Up- Area : 16,200 m2

The offices space including the following sections:

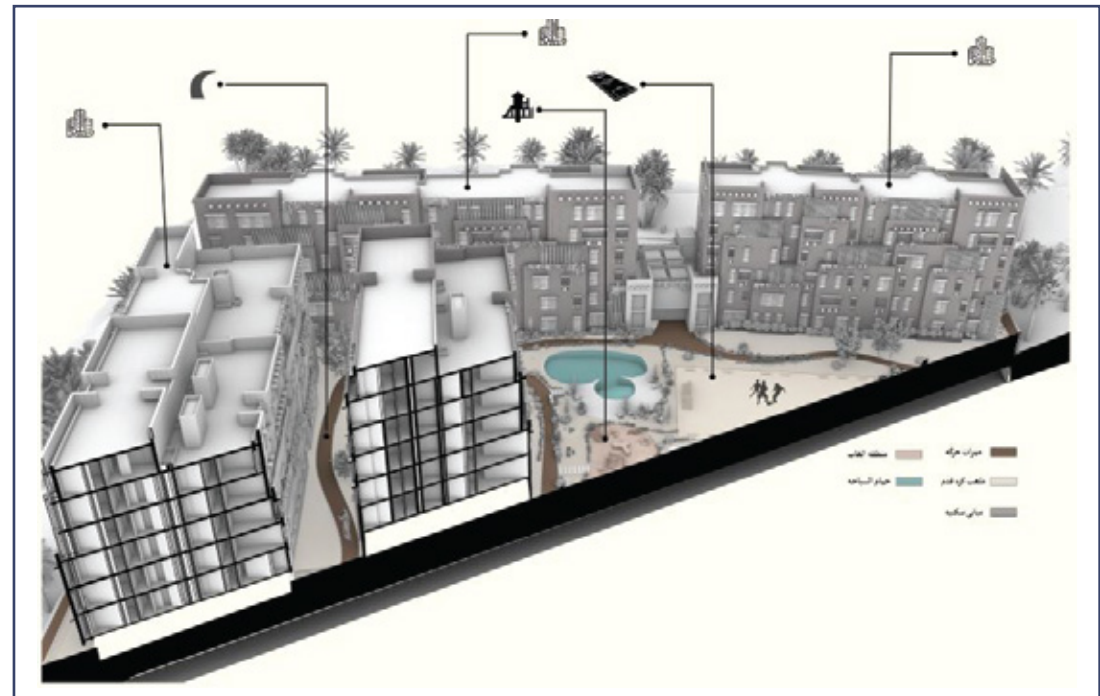
1. 14 residential buildings.
2. Hotel and mosque.
3. Infra structure works.

The project is endeavored to perform the detailed design for the floors including Architectural, civil and MEP design packages in the building and site layout.

SCOPE OF WORK

Project scope the "Design Services" form the Concept to Tender stages as per the requirements of the client mentioned in this offer. Moreover, the required offer to include the estimated Design Stage duration – (project schedule) in weeks, The consultancy services are including the following:

- Concept design review and modify
- Detailed Design Development.
- Tender stage “Drawings & BOQ & Specs”.



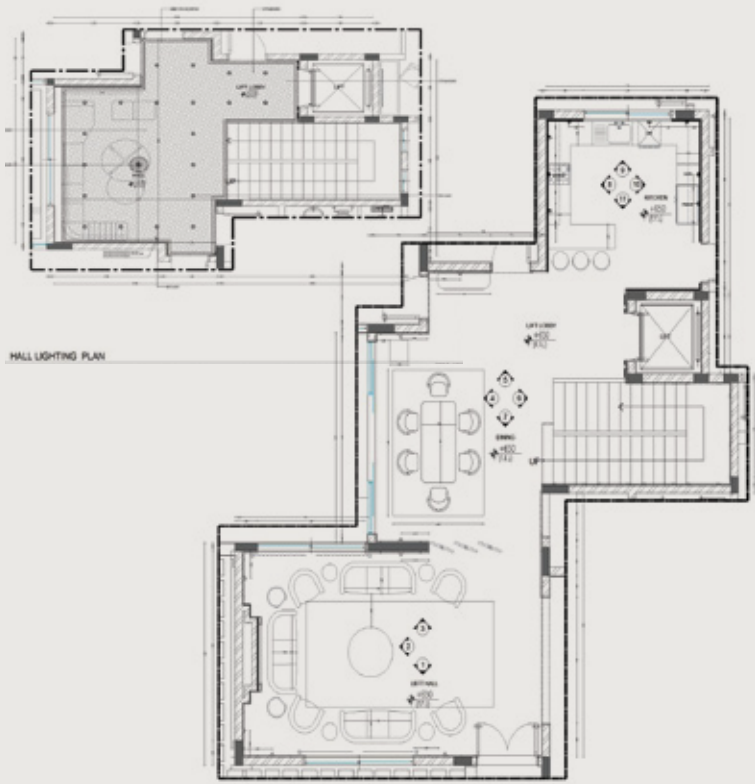
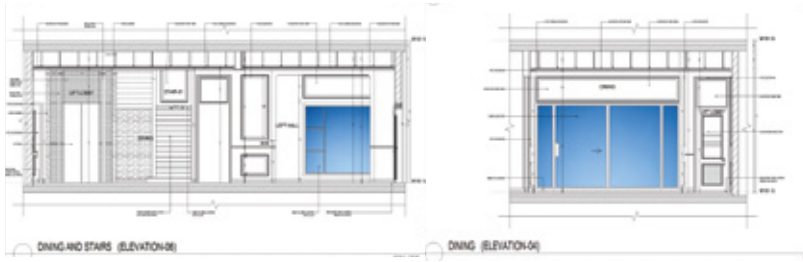
Villa Mr\Ahmed Nabil (Bahrain) (Diar El Muharraq)

Diar scope of work is to perform and deliver the complete following items:

- Architecture Design Package as per Construction requirements
- Architecture Shop drawings



Villa Mr\Ahmed Nabil (Bahrain) (Diar El Muharraq)



LEFT SALON, DINING AND KITCHEN (FURNITURE PLAN)



Luxury Villa Bahrain

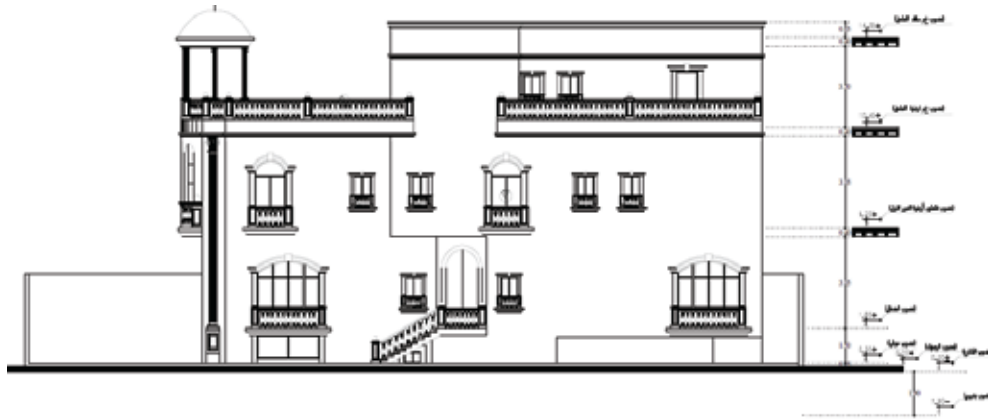
Diar scope of work is to perform and deliver the complete following items:

- **Architecture Design Package as per Construction requirements**
- **Architecture exterior shots**



Villa ElGuhany, KSA

Private Luxurious Villa Located in Saudi Arabia



Diar Scope was the MEP Engineering Design Package for the Project

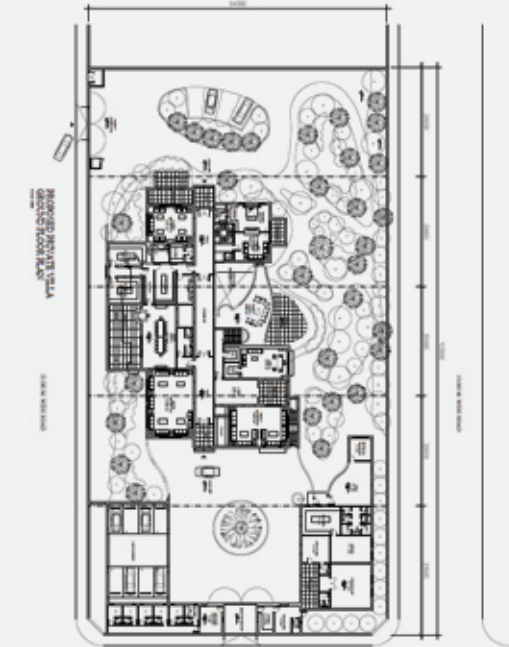
- Plumbing: Water supply and distribution, drainage and waste systems, sanitary fixtures, and hot water systems.
- Electrical: Power distribution, lighting design, grounding and bonding, communication systems (phone, internet, etc.), and home automation systems (if desired).
- HVAC: Heating, ventilation, and air conditioning systems, considering factors like climate, building size, and occupant needs.
- Equipment Selection and Lighting Control System



Diar Scope was the Engineering Design Package:

- Detailed Engineering Drawings: The engineer will produce detailed construction drawings for all structural elements, including foundations, walls, floors, roofs, and staircases
- Mechanical, Electrical, and Plumbing (MEP) Design: The engineer will design the MEP systems for the villa including heating, ventilation, air conditioning, plumbing, electrical wiring, and lighting.

- Structural Calculations and Analysis: The engineer will perform structural calculations to ensure the building can safely withstand the dead loads (permanent weight) and live loads (occupancy and environmental loads).
- In addition to the **Landscape Design for the Villa Garden**,



RIYAD PRIVATE VILLA,
FIRST FLOOR PLAN

Riyad Private Villa, KSA

Private Luxurious Villa Located in Saudi Arabia

Dina Farms Shop

El Sheikh Zayed Branch



Dina farms Shop El-Sheikh Zayed

Basic and detailed engineering of the new Shop, MEP design for Shop, el sheikh zayed, including the following:

- Electrical engineering
- Mechanical design
- Fire Fighting
- Light current works

Diar scope of work is to perform and deliver the complete following items:

- **Architecture Design Package as per Construction requirements**
- **Structure Design Package.**
- **MEP Design Package.**
- Preparation of **drawings and documents** required for the extraction of construction license.



Total Energies Gas Station

Katameya, Ahram Gardens, New Cairo

Marsa Alam Compound

Centamin (SGM)-Marsa Alam Compound

The Project Brief:

- Centamin (SGM)-Sukari Golden Mines has invited Diar Consulting Group to perform Architectural and Civil works for their Marsa Allam company compound.



- Swimming Pool.
- Sports Field (5 * Aside dimensions with 4 lanes track).
- Laundry (to be separated by Male / Female).
- Clinic.
- Bikes routes (3 * lanes) around the compound inside perimeter.
- Car Parking (30 Parking lots).
- Generators Area (3 * Gensets) (Generators' noise to be taken into consideration).
- Main Security Gate and Office including rest area.

Centamin (SGM) are planning on building their company compound at Marsa Allam city with the following requirements:

- A residential building has (256 Double rooms & 178 Single room & 20 VIP room) – with Meeting Room for 20 persons). VIP rooms must be partially but not totally separated from other rooms / Meeting room to have a privacy.
- Restaurant (80 * Persons capacity) with Kitchen (Hot Section, Butcher section, Bakery Section, Salad section, Service tools Section, Fridge Sections, dry Food Storage Section), and food receiving area on the ground floor.
- Recreation Area about 800 m2.
- GYM (21 Machines) including Toilets (Male / Female).



The Siemens logo is displayed in a teal, sans-serif font.

Siemens

DCC Building - Control Room

Siemens intends to install DMS and AMI equipment such as servers, operator consoles, video wall, UPS, batteries and etc., so the existing rooms in both SCC and WADCC shall be renovated.

Siemens invited Diar to provide a technical and commercial offer for the engineering, procurement, and construction of the subject project.

- Architecture works
- Electrical Works
- Low current works
- Mechanical works (FF and plumbing)

DIAR PROJECTS

Architecture Projects
Hospitals and Health-Care
Facilities



Al Mehwar Hospital

6th of October City, Giza, Egypt

Diar is the main Consultant of Al Mehwar Hospital that provided consulting Design and Engineering services for the whole project and construction supervision. Our team worked tirelessly to ensure that the hospital was designed and built to the highest standards to match the local and international codes, with a focus on safety, efficiency, and sustainability.

Al Mehwar Hospital located in 6 of October Cairo Egypt on a built-up area 28000 m2 consist of Basement + Ground + 5 floors



Design
Architecture
Package
as per
Construction
Requirements

MEP
Design
Package.

Tender
Evaluation

Construction
Supervision

Procurement
Support

Diar scope of work is to **perform and deliver the complete**
Following items:



MAIN ENTRANCE
WAITING AREA



AL MEHWAR HOSPITAL
MAIN ENTRANCE RECEPTION



Al Mehwar Hospital

6th of October City, Giza, Egypt

The architectural interior design of the hospital's main entrance and waiting area exudes a sense of calm and elegance. The use of clean lines and neutral colors creates a soothing atmosphere, while the plush seating arrangements and carefully placed plants add a touch of comfort and warmth. The overall design promotes a sense of tranquility, which is essential in a healthcare setting.



**AL MEHWAR HOSPITAL
MAIN ENTRANCE
WAITING AREA**

Al Mehwar Hospital

6th of October City, Giza, Egypt



The interior design of this clinic space is modern and functional. The use of light colors and clean lines creates a calming and professional atmosphere. The strategic placement of medical equipment ensures efficiency and accessibility. The addition of plants adds a touch of nature, contributing to a more pleasant and inviting environment. Overall, the design prioritizes both aesthetics and practicality, making it suitable for a healthcare setting.



The use of marble and wood creates a sophisticated and warm atmosphere.





IVF Medical Center - Dr. Wael El Banna Hospital

Dr.wael Hospital located in maadi, Cairo Egypt .
Diar scope of work is to perform and deliver the complete following items:

Preparation of drawings and documents required for the extraction of construction license.

Structure Design Package.

MEP Design Package.

Architecture Design Package as per Construction requirements

Basic and detailed engineering of **the firefighting System**



**IVF Medical Center
Interior Shot**

Large waiting area: The lobby has a large waiting area with several couches and chairs for patients to sit in. Reception desk: There is a reception desk in the background where staff members can greet patients and answer questions.

IVF Medical Center Interior Shot



Andalusia Hospital (New Heart Of Jeddah)

Andalusia group is launching Andalusia Jeddah New Hospital (New Heart of Jeddah) in 2023, The most modern smart hospital in Saudi Arabia - Jeddah and which presents a new concept of healthcare, healing and wellness.

size: 5000 sqft - 10,000 sqft



Andalusia Hospital in Jeddah is distinguished for its exceptional health experience that combines treatment and well-being for patients. In this hospital, the focus was on the entire patient's journey through the combination of innovative design, modern technology, and distinguished medical services in one place.

Andalusia Hospital (New Heart Of Jaddah)

The design features of the hospital also include the presence of 4,000 square meters of hanging gardens, a comprehensive entertainment system, and commercial services that meet the needs of patients. It also has integrated medical centers to improve patients' quality of life.



The project involved a comprehensive overhaul of the hospital's design and planning to incorporate smart technologies and advanced healthcare systems. Diar Consulting Group utilized their expertise in architecture, medical planning, and structural engineering to create a state-of-the-art facility that meets the highest standards of modern healthcare.

Diar Hospital Projects (KSA)



Diar Scope of work:

Diar Consulting Group successfully completed the re-design of the architectural, medical, and structural planning, MEP (Mechanical, Electrical, and Plumbing), and prepared the tender package for the Andalusia smart hospital in Jeddah. This remarkable achievement was accomplished within a record time of just 3 months.



Andalusia Maadi Hospital

Andalusia Group aimed to build a New Extension to Andalusia Hospital in New Maadi to be partially merged later with the existing hospital.

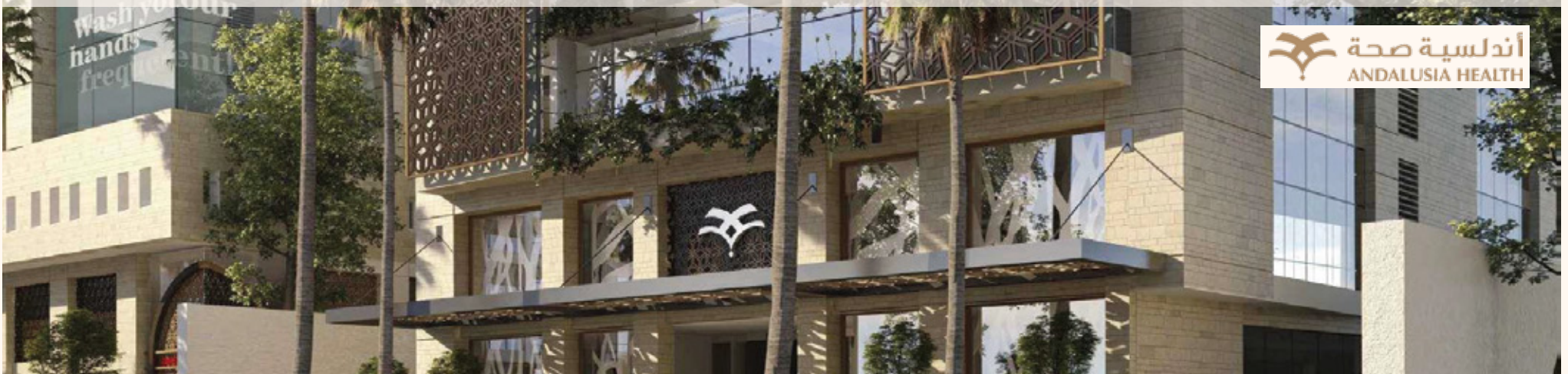
The new standalone building is on total plot area 600 sqm with 4,400 sqm built up area divided on 11 floors (Two Basement floors – Ground Floor – 7 floors – Roof Floor). New Andalusia general hospital after extension will contain 40 beds.



Diar Scope of work:

MEP Package Design and shop drawing

Diar was responsible for the design, installation, and maintenance of the mechanical, electrical, and plumbing systems in a building. These systems are essential to the safety and comfort of the occupants and must be properly designed and installed to function properly. including Electrical, Low Current System



Andalusia 6th October Hospital



Andalusia is developing its premises on the 6th. Of October City intends to make it a Prevailing treating/ healing facility and technology in the market with a Built Up- Area of 47,000 m2 and a capacity of 291 Beds and 100 Clinics.

The project endeavored to perform the detailed design for buildings including All MEP design packages in the building and site layout.





Diar Hospital Projects (EGYPT)



Diar Scope of work:

Mechanical:

- Update Mechanical Design Calculations
- Update Design brief.
- Stormwater.
- Gas System, if required.
- Water Supply Layouts & Details
- Bathrooms/Kitchens plans
- Fire Fighting Layouts & Details
- Drainage Layouts & Details
- HVAC Layouts & Details
- Equipment Schedules & Selection
- Final waste management plans
- Coordination with other services.



Diar Hospital Projects (EGYPT)

Al Moosa Hospital

Al Ahsa - Saudi Arabia - Specialized Hospital for Rehabilitation and long-term Care

Al Moosa Specialist Hospital for Rehabilitation and Long-term Care this hospital is designed as a micro-village that embraces nature and the surrounding landscape. The master plan takes its inspiration from the Al-Ahsa region's natural landform of an oasis, while the building design fosters healing through its connections to nature.

- The hospital Consist of 220 beds, 10 operation rooms.
- The building consist of 25 floors, five (5) basements, 2 floors for services (ground and fourth Mezz floors), 18 Floors.
- Note that the above mentioned areas are for each floor.
- The total area far the hospital 50,250 m2



Diar scope of work:

- **Review Architecture Design Package as per Construction requirements.**
- **Review Structure Design Package.**
- **MEP Design Package**
- **Preparation of Drawings and documents required for extraction of construction license.**

Dr. Sulaiman Al Habib Al Khobar, KSA

Dr. Sulaiman Al-Habib hospital in Al-Khobar is about two million square feet, with a capacity of 600 beds, 100 of which are for in- tensive care of all kinds. This hospital in- cludes more than 450 clinics covering all specialties, and includes two towers, each consisting of 16 floors, with a height of more than 63 meters, and parking spaces exceeding 1,600 cars.



Diar scope of work is to Redesign and shop drawings for all MEP systems. The most challenge for this project that the client request to submit the shop drawings for the whole project in just 4 months including the composite plans.

Renovation Project

Dar El Shefaa Hospital

Dar-elshefa Hospital located in Abbasiya, Cairo Egypt.



Design:
Renovation for three floors including
Covert 27 beds patient rooms
floor to 57 beds and
Renovation scope.

MEP
Design
Package.

Basic and detailed
engineering of
the Dar Al Shefa
hospital
firefighting
System



**DAR-EL SHEFA HOSPITAL
ELEVATOR LOBBY**

ABC Hospital

Syria Street, El Mohandseen, Cairo

ABC Hospital was established in 2019 as the first hospital specialized in obesity and plastic surgeries in Egypt and Africa. The hospital also obtained the American accreditation from the Surgical Review Corporation (SRC) in 2019, and the accreditation was renewed in 2022 for the second time in a row to become the first hospital accredited by the corporation in Egypt and Africa.



Design
Architecture
Package
as per
Construction
Requirements

MEP
Design
Package.

Tender
Evaluation

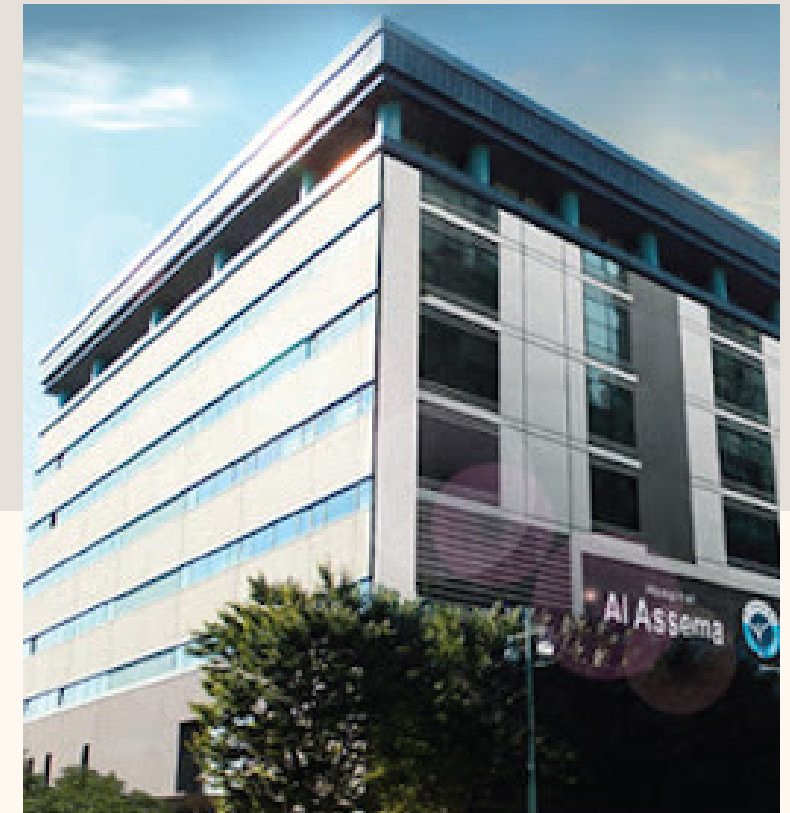
Construction
Supervision

Procurement
Support

Al Assema Hospital

Al Dokki, Cairo

This project located in AL Dokki, Cairo The client decide to make convert a residential building into a 10th floors hospital with total built up area of 4000 SQM



Diar scope of work:

- **Architecture Design Package as per Construction**
- **Requirements Prepare Soil Report.**
- **Structure Design Package.**
- **MEP Design Package.**
- **Preparation of drawings and documents required for the extraction of construction license**

Misr El Gadida Hospital



Diar Scope of work was to perform and deliver the Complete Following items:

- Architecture Design Package as per Construction requirements.
- Prepare soil Report.
- Structure Design Package.
- MEP Design Package.
- Preparation of drawings and documents required for the extraction of construction license.

Dar El Orouba

Nasr City, Cairo



Our Scope of Work was the Engineering Design Package

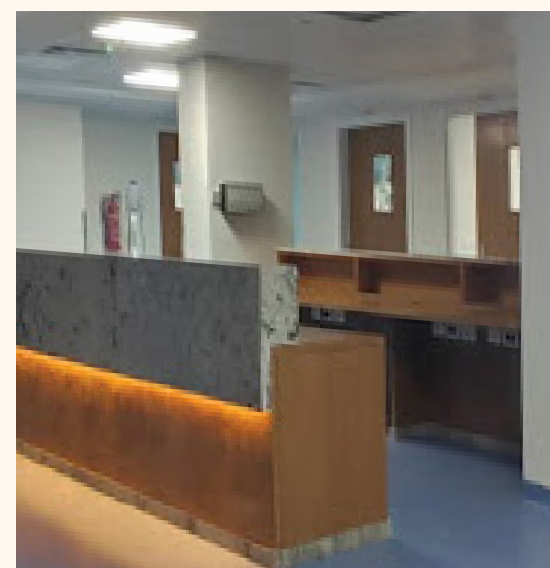
Design Architecture Package as per Construction Requirements

MEP Design Package.

Tender Evaluation

Construction Supervision

Procurement Support



Dar El Orouba Hospital is a legacy of medical Excellence, located in Nasr City, A Building consisting of 6 Floors

Al Zaytoon Specialized Hospital, El Amireya, Cairo

Al-Zaytoun Specialized Hospital contains most of the medical specialties, which are "heart - brain and nerves - digestive system and endoscopy - kidney medicine and surgery - orthopedics - joint and cartilage treatment - fracture clinic - internal medicine - urinary tract - general surgery - physical therapy for men and women - anti-smoking - rheumatism"



Diar Hospital Projects (EGYPT)



Diar Scope of work: Fire fighting and Fire Hose system Package Design and shop drawing

- Hydraulic calculations: Determining the water flow requirements and pipe sizes to ensure adequate coverage and pressure throughout the system.
- Sprinkler selection and placement: Choosing the appropriate sprinkler type (e.g., wet, dry, pre-action) and strategically positioning them based on the fire risk and occupancy.
- Pump and water supply selection: Sizing and specifying pumps and water storage tanks to meet the system's flow and pressure needs.
- Alarm and control system design: Integrating the fire fighting system with the building's fire alarm system for early detection and automatic activation.
- Standpipe and hose system design: Including stand pipes and fire hoses in strategic locations for manual firefighting by trained personnel.

Al Sayeh Square HiCare



located in **Manama, Bahrain** on a built-up area 3000 m2 including 12 clinics, reception, laboratory,..etc.



Diar scope of work
Architecture Design
Package as per
Construction
requirements
MEP Design Package.

Linear Accelerator

Air Force Military Hospital

Damietta Building Cancer Center Hospital

El-Galaa Military Hospital

Wadi El-Nile Hospital

Mostafa Kamel Military Hospital

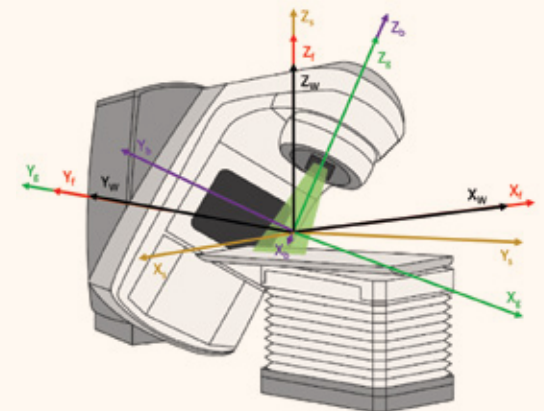
Maadi Military Hospital



Diar scope of work

EPC for full package of Architecture and MEP works for the Linear Accelerator room and related control room including the following:

- Architecture finishing
- HVAC
- Electrical
- Low Current systems





Solid foundations
for a **Brighter Future.**



DIAR OLD PROJECTS

(INDUSTRIAL, OIL&GAS PROJECTS)

EGYPT AND MENA REGION PROJECTS

WWW.DIARGROUP.COM

Buildings and Infrastructure Projects



- Royal Guard camp - Riyadh - KSA.
- Warehouse - Royal Guard camp - Riyadh – KSA.
- Service Buildings - Royal Guard camp - Riyadh – KSA.
- Preparatory year Buildings (Six types Buildings).

Shymaisy buildings Project – Shop Drawings Location:
Makkah, Saudi Arabia.

(Client: Bin Laden, redesign and Shop drawings)

- MultiPurpose Hall Biulding.
- Men's Departure Hall Biulding.
- WoMen's Departure Hall Biulding.
- Men's Administration Building.
- Visitors Building.
- Women's Administration Building.
- Womens Arrival Hall Building.
- Mens Arrival Hall Building.
- Ministry of finance Building.
- Kitchen & Bakery Building.
- Hospital service Building.
- 50 Bed Hospital Building.
- Laundry Building.

- Le Caire restaurant at Sun City Mall - Egypt.
- Premaman child dressing shop at Arkan Mall - Egypt.
- Belady restaurant at Tahrir Square - Egypt.
- Animal Laboratory House (Three Buildings).

Infrastructure Projects

- Sama criet Sixth of October City Infrastructure, Location: Egypt
- Onayzaa Infrastrcture Qaseem Location: KSA.



Commercial Building Projects

- Souq Masr Mall MEP revit model – El Sewedy Egypt
- Damietta Cancer center – Damietta, Egypt
- Nasaïem Hospital (6000m2) - Egypt
- Dokki Medical Center Building - Egypt
- Computer science Collage – Madina KSA (42000 m2)
- Environmental Collage MEP revit model (18000 m2)
- Poetry Collage MEP revit Model KSA (24000 m2)
- Gastec New office Building - Egypt
- EGYBEL-Office Building - Maadi, Egypt
- Emerging Media Office Building - Egypt

Residential Projects

- KAKIAA residential compound project, Location: Makka, Saudi Arabia.
- Limas Compound including six Villas.
- Al-Fareda Compound – Shop drawings.



- Residential and commercial buildings Compound Infrastructure – Location: Alexandria, Egypt.
- El-Guhany Villa Detailed design.
- Asmarat City Mosque.
- Ibrahim Khalil Mosque at 5th Settlement.
- Residential Buildings - Royal Guard camp Riyadh – KSA.



Software
Our Success **Partners**
Certificates
Our Offices Map

Software

"At Diar Consulting Group, we leverage cutting-edge software to deliver exceptional engineering solutions. Our expertise spans a range of industry-leading tools, enabling us to optimize design, improve efficiency, and achieve optimal project outcomes."

Electrical Software					
MEP Software					
Instrumentation Software					
Process Software					
Piping Software					

Our Clients, Partnerships and Collaborations



Partnerships



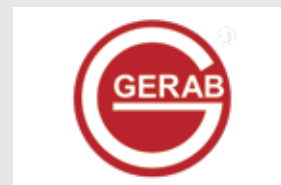
Meticulous, USA



Bechtel, USA



ZAVKOM, Russia



GERAB, UAE

SUCCESS PARTNERS

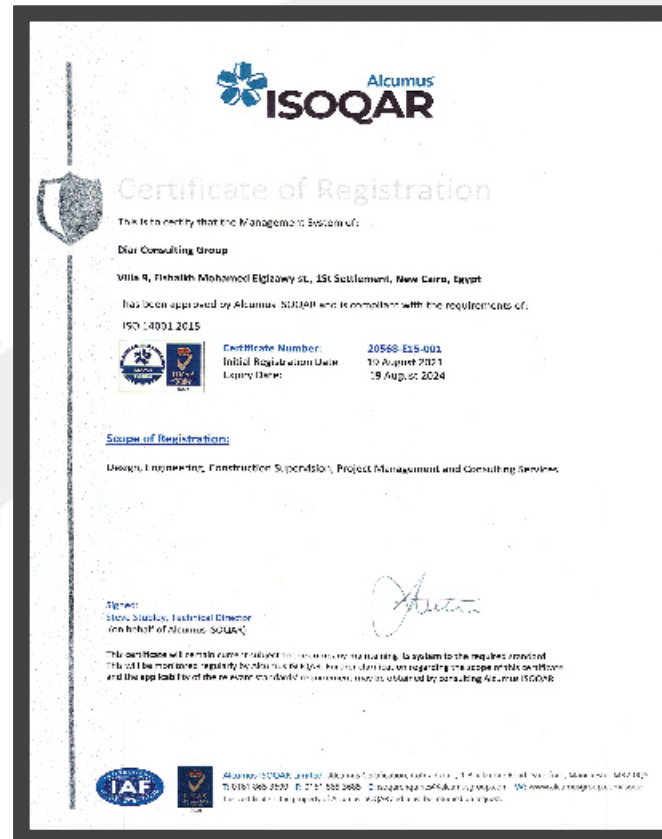
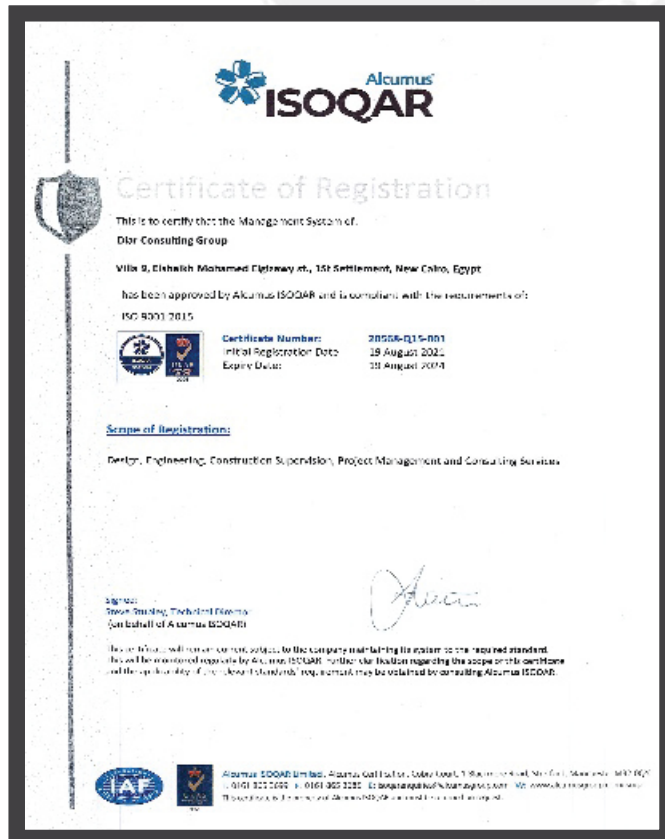
Since our foundation, Diar has established successful business relationships with many international business partners, completing projects of massive scales and following through on its commitment to safety, value creation, optimized solutions and responsiveness. Diar's clients expand across the entire globe with landmark projects.



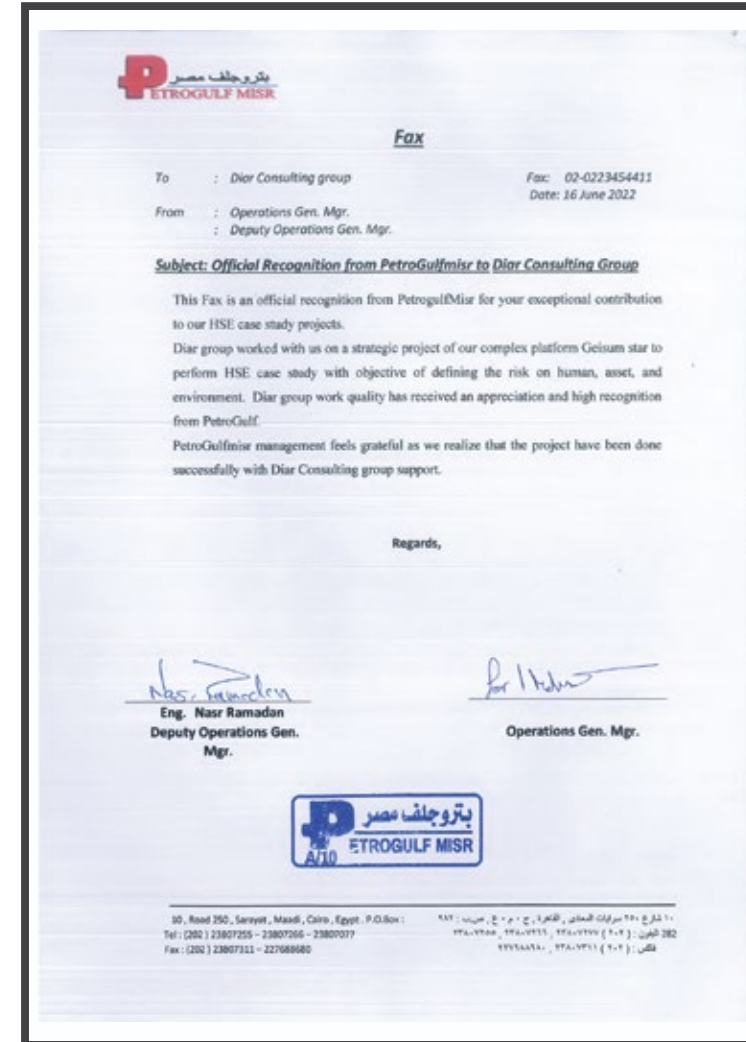
Certifications

Out of international / national interest of the quality, environment and occupational health & safety and in line with Egypt's vision 2030 for achieving sustainable development and the company interest with the customers satisfaction and continual improvement, Diar has the leadership in obtaining certificates of international standards for:

- Quality Management Systems (ISO 9001)
- Environmental Management Systems (ISO 14001)
- Occupational Health & Safety Management Systems (ISO 45001)



Certifications



These certifications and Clients Appreciations demonstrate our commitment to excellence and expertise in various engineering disciplines, and showcase our ability to deliver high-quality and reliable engineering services to our clients.

Certifications Clients Appreciation

We are incredibly grateful for the opportunity to work with such esteemed clients. Your trust in our expertise has been instrumental in our success. These certificates are a small token of our appreciation for your partnership and the mutually beneficial relationships we have cultivated.



Our Offices Map

Diar has successfully completed hundreds of projects all around the world, We operate throughout he surrounding region using the combined resources to serve public and private clients in the infrastructure, buildings and Oil & Gas sectors..



Egypt (Head Office), UAE, KSA, Bahrain, Oman, Algeria, Oghanda, South Africa, Singapore, Armenia, Mauritania Burkina Faso



EGY Add. (Head Office)
Villa 9, El Shaikh Mohamed El Gizawy
street Zone 9 - 1st Settlement,
New Cairo - Cairo, Egypt

UAE Add.
RAKEZ free zone, RAK, UAE

Algeria Add.
REGUS ALGERIA (GADOUCH PROJECT
58 LOGTS LOT 33, 35, 36,
Algiers, 1600)



Visit Our Website



☎ MOB: 0 106 642 4403


📞 TEL. / FAX: +2 2345 4411

✉ Info.diar@diargroup.com

🌐 www.diargroup.net

 facebook.com/ConsultingDiar

 Diar Consulting Group

 Diar group

 instagram.com/diarconsultinggroup/

 twitter.com/diarconsulting

Thank You