



Diar
Consulting Group

We provide Consultant & Engineering Services primarily for the infrastructure, buildings and Oil & Gas projects located in **Egypt and The MENA Region.**

BUILDINGS AND INFRASTRUCTURE

Profile
Company

TABLE OF CONTENTS

Welcome to our Diar Company profile (Oil&Gas and Industrial Profile). We invite you to take a Closer Look at Our Company and the Services we offer. With a team of highly skilled engineers and a commitment to excellence, we are dedicated to providing innovative Engineering solutions.

1 ABOUT DIAR
Our Mission, Vision, Values
Why Diar
Our Team Culture, Our Core Values

2 OUR BOARD OF DIRECTORS
Great teamwork is the only way we create the breakthroughs that define our careers.

3 OUR BUSINESS FIELDS
Our Engineering Fields, and Project Phases and Deliverables

4 OUR PROJECTS
Building, infrastructure, and PMC Projects

5 CERTIFICATION
Diar Certifications, Clients Appreciation

6 OUR SUCCESS PARTNERS
We Established successful business relationships with many international business partners.

7 CONTACT INFO
Our Offices Map and our Contact info

ABOUT US

From 2009 DIAR has provided Reliable solutions while maintaining a Relentless focus on safety and an uncompromising standard of quality.



“

With extensive capabilities that serve our diverse end markets, we can work on a project from concept to completion and beyond.

Regardless of a project's size or location, DIAR deliver consistent, superior results, which our customers have come to expect.

”

Today we continue our legacy of excellence with a unique business model that offers a more complete supply chain solution to our customers.

OUR MISSION

To provide engineering and consulting services (design & supervision) for the infrastructure (civil works ,architecture and landscape), buildings and Oil & Gas projects serving our clients locally and regionally. Our clients can depend on our ability to design any project from feasibility, preliminary through for construction, tender package stages.



OUR VISION



Our vision is to be one of the key professional firms in the fields of Engineering & consulting services in MENA Region for the infrastructure, buildings and Oil & Gas sectors.



Our Design Principles

Design should fit the Client **Budget**.

Considering how we want to use the available resources.

Design should meet **Client Requirement**

allow the project team to explore variable options. and recommend the best option which suite and deliver the Client Requirements.

Design should meet the **Propose Target**

The Goal of engineering design is always to solve a problem.

Design should be **Applicable**

Engineering design also should be leading to improved solutions and positive outcomes.

WHY DIAR... ?

At Diar we partner with our clients to **provide superior quality solutions that deliver – or Exceed - the results** they are seeking and give them peace of mind that their operations are running smoothly.

Our Team CULTURE

Every day we work to maintain the highest level of our personnel's competence through regular training, organizational tests and the implementation of proven human resource management methods.

The members of our team have gained their experience while working on many projects and designing solutions for **international corporations as leaders in their industries.**

We have a reputation for innovation and a proven track record for success, having **completed numerous major projects, both national and international**, on spec, on time and on budget.



Health and safety is more than just a mantra at Diar; it is a driving force behind every element of our business operation. We have a genuine commitment to conserving the natural environment, where we are recognized as leaders in our field.

OUR CORE VALUES

At DIAR, we're guided by [8] Core Values that fuel our success and shape our Interactions with each other and our clients.





DIAR BRINGS THE EXPERTISE OF MULTINATIONAL CONSULTANTS CAPABILITIES
COUPLED WITH THE HISTORY OF SUCCESSES, TECHNICAL AND LOCAL
KNOWLEDGE OF MIDDLE EAST MARKET.



MEET OUR BOARD OF DIRECTORS

GREAT TEAMWORK IS THE ONLY WAY WE CREATE THE BREAKTHROUGHS THAT DEFINE OUR CAREERS.



HANY NABIL

MANAGING DIRECTOR,
PH.D, M.SC

THE MANAGING DIRECTOR OF DIAR (THE LEADING CONSULTANT ENGINEERING FIRM SERVING PRIMARILY THE INFRASTRUCTURE, BUILDINGS AND OIL & GAS SECTORS IN THE MEA REGION). SINCE 2011



MAHMOUD NABIL

ENGINEERING DIRECTOR,
PH.D, M.SC

MR MAHMOUD IS AN ENGINEERING DIRECTOR WITH EXPERIENCE SPANNING 18 YEARS IN THE DESIGN AND MANAGEMENT ENGINEERING SECTOR



OSAMA FAWZY

OPERATION MANAGER

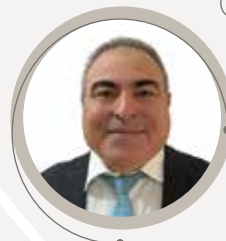
30 YEARS OF EXPERIENCE (QHSE/ OPERATIONS AND GENERAL MANAGER), GENERAL MANAGEMENT AND OPERATIONS MANAGEMENT



BASSEM SANAD

BUILDINGS AND
INFRASTRUCTURE DIRECTOR

BASSEM HAS OVER 18 YEARS EXPERIENCE IN THE MEP EXPERIENCES IN MULTI-SKILLS PROJECTS (UAE & QATAR & EGYPT)



AHMED BAKR

MINING DIRECTOR

MORE THAN 30 (THIRTY) YEARS OF EXPERIENCE IN THE FIELD OF EXPLORATION, PRODUCTION, TESTING OF PHOSPHATE MINING (OPEN CAST AND UNDERGROUND TUNNELS PRODUCTION) AND ROM (RUN OF MINE).



TAREK ADLY

HSE DIRECTOR

MR MAHMOUD IS AN ENGINEERING DIRECTOR WITH EXPERIENCE SPANNING 18 YEARS IN THE DESIGN AND MANAGEMENT ENGINEERING SECTOR



HASSAN MOHAMED

MECHANICAL DIRECTOR

FORTY (45) YEARS' EXPERIENCE IN THE DESIGN AND PROJECT MANAGEMENT OF OIL/GAS, REFINERIES.

MEET OUR BOARD OF DIRECTORS

GREAT TEAMWORK IS THE ONLY WAY WE CREATE THE BREAKTHROUGHS THAT DEFINE OUR CAREERS.



BIESHROY WAGDY

CONSTRUCTION DIRECTOR

MORE THAN 15 YEARS EXPERIENCE IN PROJECTS CONSTRUCTION SUPERVISION /DESIGN SPECIFIC TO THE MECHANICAL / PIPING ACTIVITIES IN FIELDS OF OIL& GAS, POWER GENERATION, INDUSTRIAL, AND RESIDENTIAL



MOHAMED AZZOUNY

CIVIL DIRECTOR

PH.D. CIVIL ENGINEERING STRUCTURE DIVISION



TAREK AKL

PROCESS DIRECTOR

HE HAS MORE THAN 30 YEARS OF EXPERIENCE IN PROJECT MANAGEMENT AND ENGINEERING MANAGEMENT.



SAMIR ANWAR

I&C DIRECTOR

TAREK HAS OVER 45 YEARS OF EXPERIENCE IN OIL AND GAS, PLASTIC, AND DETERGENTS INDUSTRIES.



AHMED KHAIRY

0000000

0000000000000000000



MOHAMED OSAMA

PROJECT CONTROL

0000000000000000000



MOHAMED FAROUK

ARCHITECTURE DIRECTOR

OVER 10 YEARS OF OVERALL EXPERIENCE DESIGNING, DEVELOPING CONCEPT & CONSTRUCTION DRAWINGS. EXTENSIVE EXPERIENCE IN DESIGNING AND MANAGING CONSTRUCTION ACTIVITIES



**MAKING
YOUR VISION
BECOME A REALITY
IS OUR SPECIALTY**

DIAR OIL & GAS, PETROCHEMICAL, INDUSTRIAL
BUILDINGS AND INFRASTRUCTURE IN ADDITION TO
PROJECT MANAGEMENT CONSULTING SERVICES

BUSINESS FIELDS

DIAR has provided reliable solutions for different types of projects: Building, infrastructure, Industrial, and Oil & Gas according to international standards.

DIAR services including **Engineering, procurement, and construction to meet our client satisfaction with high quality and minimum cost.** DIAR believes that our quality is the main target for our team to be a competitive company in the world.



CONSULTING

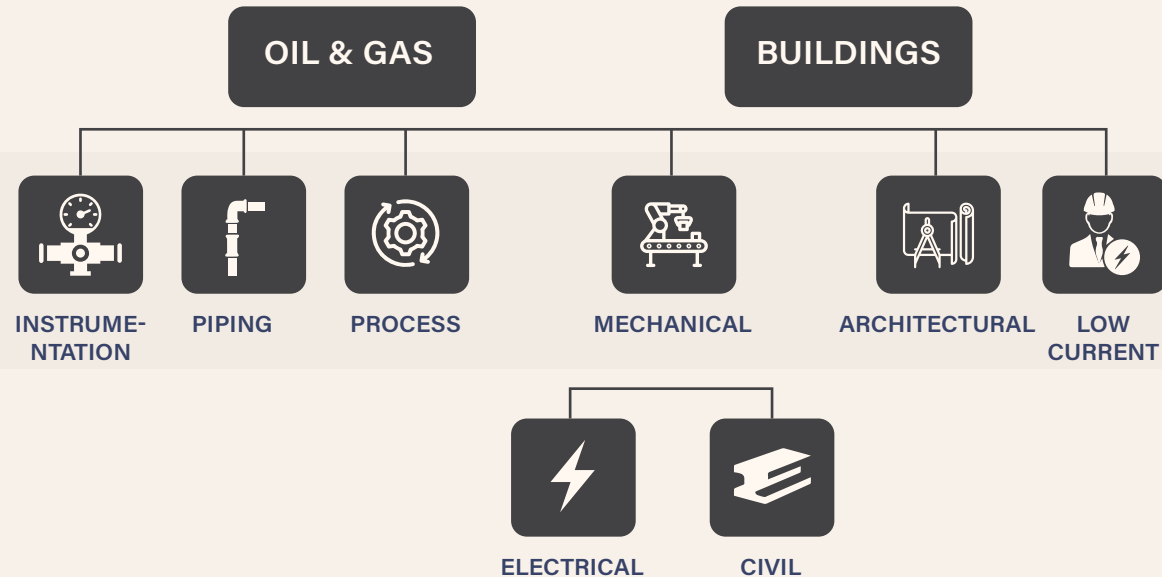


EPC CONTRACTS



PMC MANAGEMENT

COMPANY DISCIPLINES



INFRASTRUCTURE AND BUILDINGS

INDUSTRIAL AND OIL & GAS

BUSINESS FIELDS

DIAR CONSULTING GROUP



Engineering **Projects Phases**

Engineering Consultant for Buildings and Infrastructure

DIAR services including Engineering, procurement, and construction to meet our client satisfaction with high quality and minimum cost. DIAR believes that our quality is the main target for our team to be a competitive company in the world.

PHASE 01

CONCEPT SELECTION AND FEASIBILITY STUDIES

Feasibility Study:

It is an analysis into the viability of an idea. It is the initial design stage to any project or plan.

Concept Selection is an element of the design process. It enables you to pick the idea(s) which best satisfy the Design Specification.

PHASE 02

CONCEPT DESIGN

It's the point within the development cycle that typically sits between the Project requirements and detailed design.

PHASE 03

SCHEMATIC

the project team determines the areas, physical requirements and relationships of all the required building spaces and components, then confirms or revises the total building square footage and the total project budget, as well as the project schedule and occupancy dates.

PHASE 04

DETAILED DESIGN

Detailed engineering design includes the following stages: Checking specifications. Defining subsystems, checking, and assembling parts. Finalizing individual parts and accomplishing technical calculations.

PHASE 05

TENDER DOCUMENTS

The set of documents prepared by a quantity surveyor to invite bids from contractors, including drawings, specifications, bills of quantities, and contractual terms.

PHASE 06

IFC

IFC (Issued for Construction) and Shop Drawings play an important role in detailing out information about all components in a construction project. Extracting these drawings can help all involved stakeholders to speed up the project.

PHASE 07

PROCUREMENT SUPPORT

EPC contracting is a type of contract in which the contractor is responsible for the design, engineering, procurement, and construction supervision of a project

OUR ENGINEERING DISCIPLINES-DELIVERABLES

1. ARCHITECTURE

Architecture and design consultancy focusing on strategy, architecture and design for corporate, public sector and education clients for new build, refurbishment and heritage projects.

Our team has wealth of experience and comprises architects, interior designers, analysts, technicians, graphic designers and communication experts.

We cover all architectural work stages, adding further value with our extensive analytical tools and experience.



- Architectural Design
- Interior Design.
- Detailed Design.
- Working Drawing.
- 3d Modeling & Rendering.
- CAD Conversion/As Built Drawings.
- Interior Design.
- Detailed Design.
- Working Drawing.
- 3d Modeling & Rendering.
- CAD Conversion/As Built Drawings.



2. CIVIL

Our designers and technicians can provide quality engineering, and a broad base of practical experience for your project. Presently, we can undertake the following:-

Civil...

- Foundation design, analysis and details for equipment/machinery, storage tank, bunkers and silos, bridge,
- Industrial plant structures, tunnels, ducts, utility towers, galleries and walkways, pipe racks and general structures.
- Reinforcement detailing and bar bending schedules.
- RCC drawings, shuttering plans
- Water supply and distribution plans and details
- Reservoirs & water tank details.



REVIT SUPPORT

- Diar Consulting Group is a group of (BIM Managers, BIM Consultants, BIM programmers, Technical support, Specialists, Autodesk certified professional users).
- Diar are ready to provide (BIM Training, BIM Technical support, BIM Implementation)
- Methodology: BIM Consultancy, BIM Modeling for BIM users and companies.
- Also we are publisher on Autodesk store.
- Diar Offers a Free BIM Presentations for the new users & companies.
- Our services include Autodesk Revit and Autodesk Navisworks.
- Manage software products including but not limited to incorporating new version releases and customization of the product
- Manage the implementation of supporting software for ,BIM
- Evaluate new BIM related software and technologies
- Stay informed on best practices for use of Revit BIM.
- Stay informed on other BIM related Software and how they work with Revit
- Installation and support of related BIM software.

LEARN.
PERFORM.
RESULTS.

Certificate of Completion

Completed
This is to certify that the project has been completed in accordance with the contract documents and the client's requirements. The project was completed on the date of completion and the project was completed in accordance with the contract documents and the client's requirements.

Project & Contract
Name
Project Location
Date
Location

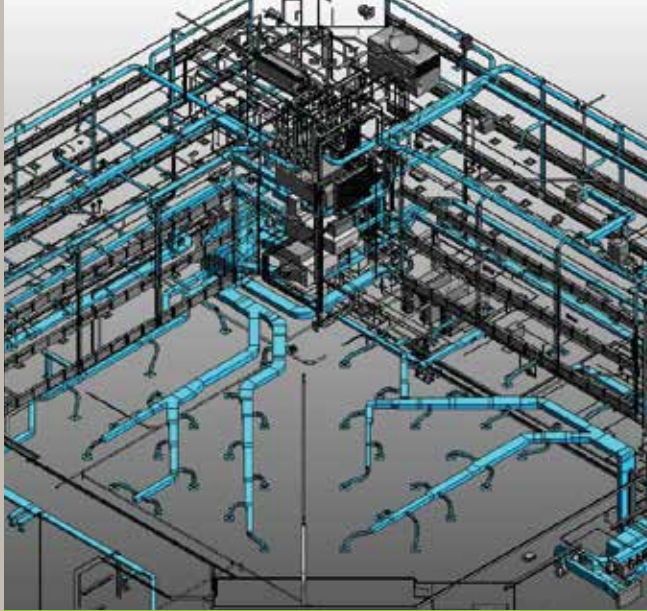
28 Nov 2011
11:00 AM
11:00 AM

Autodesk
BIM & Construction Solutions

Carl Bone
Carl Bone
President, Construction Division

3. LANDSCAPE

- Site survey and analysis
- Program of needs
- Conceptual design sketches and models
- Landscape construction plans
- Plant lists and specifications
- Material specifications
- Lighting plans
- Signage and wayfinding plans
- Sustainability reports
- Construction details and specifications (shop drawings)
- 2d & 3D models and renderings
- As-built drawings



4. MEP

- Mechanical drawings and specifications: Detailed plans for HVAC systems, ductwork, piping, equipment selection, and control systems.
- Electrical drawings and specifications: Comprehensive plans for power distribution, lighting, communication systems, and fire alarm systems.
- Plumbing drawings and specifications: Detailed plans for water supply, drainage, waste disposal, and sanitary systems
- 3D models and simulations: Visual representations of the MEP systems and simulations of their performance.

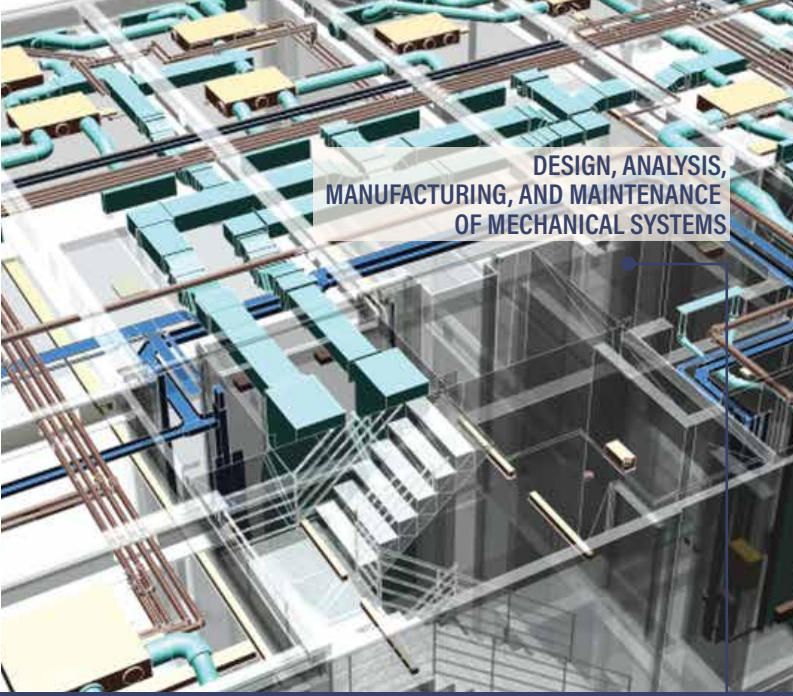


5. HSE

1. HSE Plan which identifies potential hazards, assesses risks, and defines control measures to minimize them.
2. Risk Assessment also includes recommendations for risk mitigation and control.
3. Safe Work Procedures (SWPs) They include information on personal protective equipment (PPE), tools and equipment use, and emergency procedures.
4. Environmental Impact Assessment (EIA)
5. Emergency Response Plan
6. Training Materials
7. Permits and Approvals
8. Monitoring and Reporting

The specific HSE engineering deliverables required for a project will vary depending on the project's size, complexity, and location.





DESIGN, ANALYSIS,
MANUFACTURING, AND MAINTENANCE
OF MECHANICAL SYSTEMS

6. MECHANICAL

- Tanks detailed and fabrication drawings.
- Static Equipment detailed and fabrication design. (Vessels, tanks)
- Machinery equipment specifications, datasheets & material requisitions.
- Cooling Load Estimation.
- Duct Design.
- Equipment selection.
- Chilled Water piping.
- Pump head & flow calculation.
- Water tanks calculation.
- Rain water and drainage design.
- Electrical Water Heaters design.
- Designed as a green building for LEED Certification.

7. ELECTRICAL ENGINEERING

- Electrical Systems' Analytical and Special studies
- Grid-Connected Power Generation Plants.
- High Voltage Grid-Connected Substations
- MV Overhead Transmission Lines
- Island and Field Interconnected Power Generation Plants.
- MV and LV Power Distribution Systems (Indoor, - Outdoor and Explosion Proof)
- Electrical Prefabricated Substations, Modules and Kiosks.
- AC & DC UPS systems
- Power Factor Improvement capacitor banks.
- Solar Power units
- Cabling and Raceways Systems
- Lighting Systems
- Grounding and Lightning Systems
- Navigational Aids
- Electrical Heat Tracing



8. LOW CURRENT

- Data.
- VOIP Telephony System or conventional PABX system.
- IPTV or MATV system.
- Audio visual system.
- Public address system.
- Fire alarm systems.
- Car parking security system.
- IP-CCTV or conventional CCTV.
- Access Control system.
- Digital Signage system.
- Master Clock system.
- Building Management System BMS.



OUR PMC DELIVERABLES

1. Planning Aspect

- Develop Master time schedule
- Monthly update, and one month look ahead
- Develop monthly report
- Weekly report for all staff including the critical activities should be finish next week, and the delayed activities for current week
- Develop reports for cause of delays and how to crash
- Develop crashed time schedule if needed

2. Cost control Aspect

- Develop S- Curve, and expected cash Flow
- Develop cost control system , as log for all subcontractors and all activity will performed in house and estimate cost for each items
- Identify target cost
- Update cost estimate and calculate variance of cost
- Make cost analysis and develop corrective actions
- Develop monthly cost report
- Create all cost indexes, SPI, CPI, ETC, EAC
- Analysis all variation orders

3. Resource Management Aspect

- Resource allocated for activities (equipment& labor & material)
- Managing the resource over project life

4. Contract Administration Aspect

- Review contract terms and identify all obligations
- Identify financial and contractual commitment
- Develop delay analysis and time impact analysis
- Prepare all contractual litters
- Respond for all consultant contractual litters
- Monitors and alarm for all potential claims
- Prepare claim document and develop all claims



AIU	1,822 (-35)	1,822 (-35)	1,822 (-35)
MBC	3,605 (+210)	3,605 (+210)	3,605 (+210)
YBV	3,204 (-33)	3,204 (-33)	3,204 (-33)
MBB	3,320 (-120)	3,320 (-120)	3,320 (-120)
LJH	9,542 (+128)	9,542 (+128)	9,542 (+128)
QMN	5,211 (+156)	5,211 (+156)	5,211 (+156)
WFF	712 (+12)	712 (+12)	712 (+12)
MJB	2,609 (+35)	2,609 (+35)	2,609 (+35)
M	7,100 (-60)	7,100 (-60)	7,100 (-60)
HJM	134 (+5)	134 (+5)	134 (+5)



QUALITY, ENVIRONMENTAL, HEALTH & SAFETY MANAGEMENT SYSTEM



Out of international/national interest of the quality, environment, and occupational health & safety and in line with Egypt's vision 2030 for achieving sustainable development and the company's interest with the customer's satisfaction and continual improvement, Diar has the leadership in obtaining certificates of international standards for:

These certifications demonstrate Diar's commitment to meeting international standards in these areas and ensuring the well-being of its employees, customers, and the environment. By obtaining these certificates, Diar aims to enhance its reputation, attract more customers, and contribute to Egypt's vision of sustainable development.

- Quality Management Systems (ISO 9001)
- Environmental Management Systems (ISO 14001)
- Occupational Health & Safety Management Systems (ISO 45001)

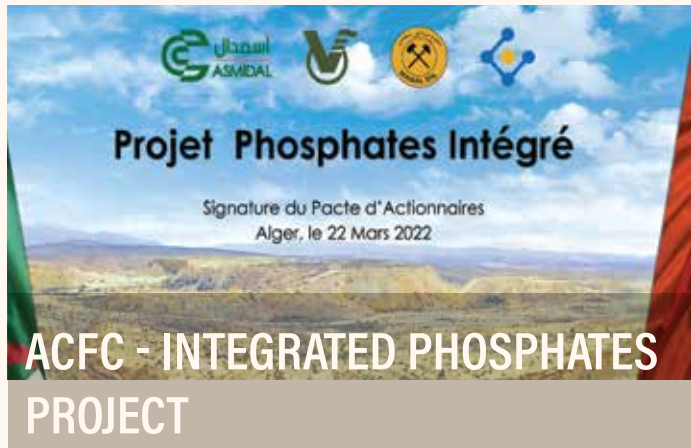
The implementation of the requirements of these international standards was effectively considered in all of the company's projects and activities in all stages (design, procurement and construction supervision) through an integrated management system to monitor, evaluate and improve Diar performance in the Quality, Environmental & Safety and Customer Support Management Systems.



DIAR PROJECTS

INFRASTRUCTURE
AND BUILDINGS PROJECTS. IN ADDITION TO
PROJECT MANAGEMENT CONSULTING

PROJECT MANAGMENT (PMC) PROJECTS



Project Brief:

AC Fertilizer Company, Joint stock company under Algerian law created to develop the integrated phosphates Project (PPI) which consists of the development, exploitation of the deposits, the enrichment of phosphates of the deposit of Bled El Hadba/ wilaya of TEBESSA, Algeria

Scope of Work:

The Client plans to use a PMC Service Provider exclusively during the planning phase (studies phase) to benefit from its expertise in the field of the development, exploitation of phosphates deposits and their enrichment, chemical transformation of phosphates and manufacture of ammonia and of Fertilizers through a Selective Consultation.

Client:

AC Fertilizer Company

Location:

Bled El Hadba/ wilaya of TEBESSA, Algeria

Project Brief:

October Dry port company intended to develop, construct and operate, and maintenance of the 6th of October Dry Port ("DP6"), the first inland dry port in Egypt in the city of 6th of October, west of Cairo (signed on 09 September 2021).

The project involves the supply and installation of GOEC (General Organization for Export and Import Control) laboratories within the Dry Port.



Scope of Work:

The scope of work includes demolition, masonry works, flooring and wall tiles installation, installation of wooden doors, marble flooring, false ceiling, and mechanical and electrical works. These tasks encompass clearing the area, constructing walls, installing flooring and wall tiles, setting up wooden doors, incorporating marble flooring, installing false ceilings, and implementing HVAC and electrical systems.

Client:

October Dry Port

Location:

6th October, Giza

Project Brief:

The establishment of the New Martyrs Hospital on an area of approximately 21,000 square meters, with a financial appropriation of half a billion pounds, as the Undersecretary of the Ministry of Health indicated that the designs for the hospital are being prepared to start implementation.

which is scheduled to be included in the comprehensive health insurance system, and to provide services to the people of the city of Shahdaa and all the 27 villages of the center.

Scope of Work:

- Consultant of the main contractor.
- Main coordinator between ministry of health, owner consultant and project contractor and designer.
- Designer reviewer for all disciplines as of architectural, civil and MEP.
- Supervisor consultant for all construction works at site.

Client:

Ministry of Health

Location:

Monufiya, Egypt



BUILDINGS AND INFRASTRUCTURE PROJECTS



AL GALALA HOTEL

AL GALALA MOUNTAIN RESORT - AL AIN AL SOKNA

Project Brief:

The Galala Hotel is located within the Galala Plateau project, the second largest national project approved by President Abdel Fattah El-Sisi in 2014, and supervised by the Engineering Authority of the Armed Forces, to be the capital of the city of Ain Sukhna and a tourist and entertainment gathering, at the highest international levels.

The coastal hotel, which was designed and implemented according to the latest engineering methods and architectural designs to be a masterpiece and a distinctive sign of the project, consists of:

257 Rooms

34 Suites

An Entrance hall, waiting salons

A Giant conference hall

4 Subsidiary halls, a Main Restaurant

A Specialty Restaurant

And a parking lot.

The project includes 53 national civil companies working with the armed forces, including 40 Egyptian companies

THE PROJECT AREA CONTAIN GROUND AND SIX FLOORS AND THE BUILT UP AREAS IS ABOUT TOTAL COMMUTATIVE AREA 116000 M2



Mount Galala consists of ancient archaic rocks, abundant with mineral veins, the Northern Galala Plateau (1,223 metres), and the Southern Galala Plateau (1,472 metres), and between them is Wadi Gharba, which consists of Apocinian limestone rocks. Within the Galala Plateau, we passed through many valleys, including the Abursis Valley. Wadi Amalug, Wadi Naot, and Wadi Horus.



BUILDINGS AND INFRASTRUCTURE PROJECTS



The Unique Geographical Location of the project.

The site of Jabal Al-Galala Mountain was chosen for its distinguished location, and it is also rich in a lot of wealth that will bring development to Egypt, as it contains marble raw materials, and the road that will be built in the mountain will help facilitate the transportation of these raw materials to the quarries.

A look at the geographical nature of the project site..

The Al-Jalala Plateau... is part of the mountain range located west of the Red Sea, which faces the Hijaz Mountains on the eastern side and within Saudi territory. It slopes steeply towards the Red Sea and gradually inland, as it represents the western, jumping edge of the Red Sea Rift.



The Galala Plateau area...a unique area...the magic of nature surrounds it from every direction, in addition to many of the ingredients that qualified it to become one of the major national projects whose implementation is supervised by the Engineering Authority of the Armed Forces...This huge

project includes the Galala International City and King Abdullah University. And a tourist resort overlooking the Gulf of Suez, in addition to the "Ain Sokhna-Zaafarana" road, which bisects Mount Galala.

THE MOUNTAIN HOTEL PROJECT AREA CONTAIN GROUND AND SIX FLOORS AND THE BUILT UP AREAS

IS ABOUT TOTAL COMMUTATIVE AREA 116000 M2



Diar Scope of work:

MEP Package Redesign and shop drawing Diar was responsible for the design, installation, and maintenance of the mechanical, electrical, and plumbing systems in a building. These systems are essential to the safety and comfort of the occupants and must be properly designed and installed to function properly. including Electrical, Low Current System

Locaion:

El Galala City, El Ain El Sokhna, Egypt



BUILDINGS AND INFRASTRUCTURE PROJECTS



MARSA ALLAM COMPOUND

CENTAMIN (SGM) -
MARSA ALAM COMPOUND

The Project Brief:

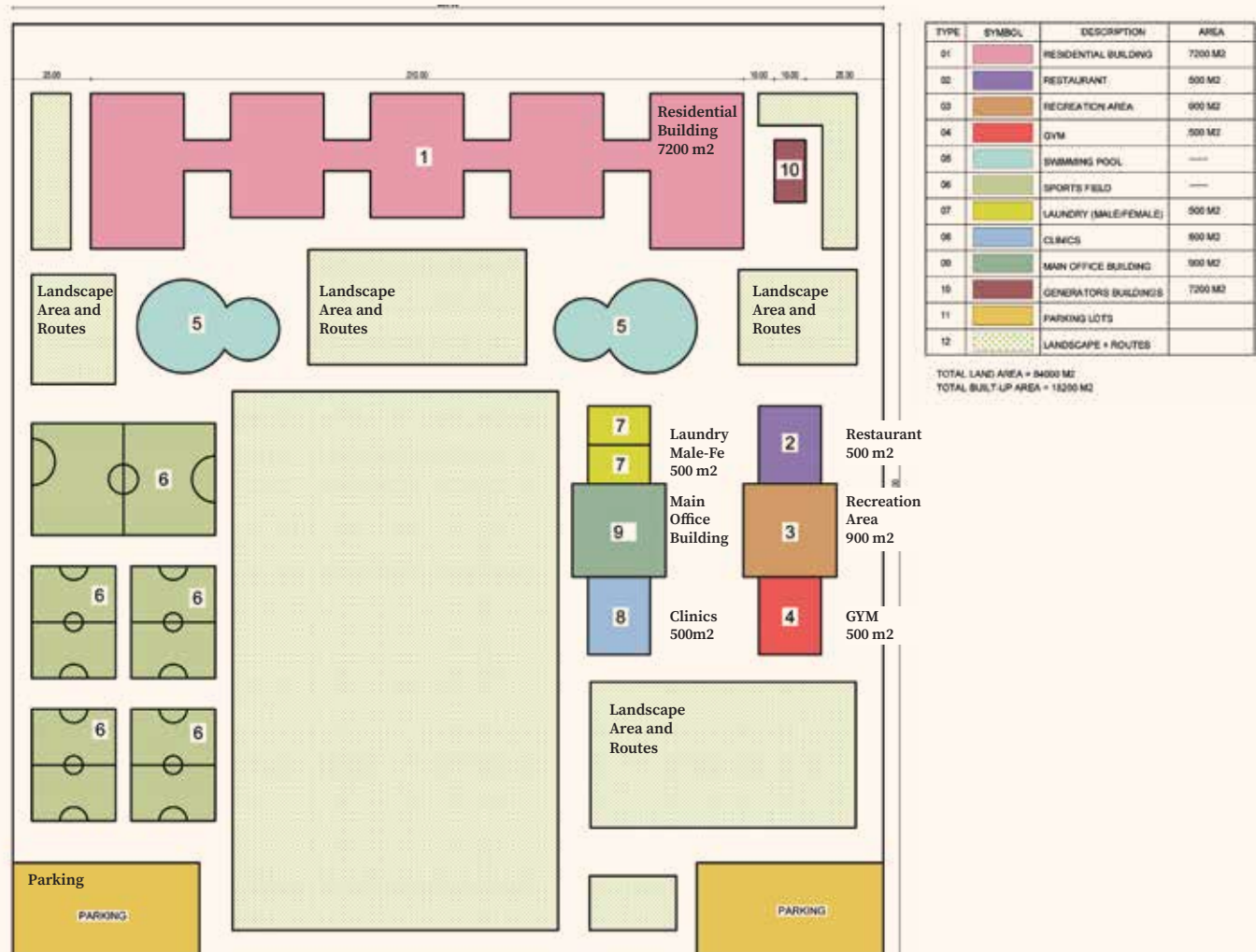
Centamin (SGM)-Sukari Golden Mines has invited Diar Consulting Group to perform Architectural and Civil works for their Marsa Allam company compound.

Centamin (SGM) are planning on building their company compound at Marsa Allam city with the following requirements:

- A residential building has (256 Double rooms & 178 Single room & 20 VIP room) – with Meeting Room for 20 persons). VIP rooms must be partially but not totally separated from other rooms / Meeting room to have a privacy.
- Restaurant (80 * Persons capacity) with Kitchen (Hot Section, Butcher section, Bakery Section, Salad section, Service tools Section, Fridge Sections, dry Food Storage Section), and food receiving area on the ground floor.
- Recreation Area about 800 m2.
- GYM (21 Machines) including Toilets (Male / Female).

- Swimming Pool.
- Sports Field (5 * Aside dimensions with 4 lanes track).
- Laundry (to be separated by Male / Female).
- Clinic.

- Bikes routes (3 * lanes) around the compound inside perimeter.
- Car Parking (30 Parking lots).
- Generators Area (3 * Gensets) (Generators' noise to be taken into consideration).
- Main Security Gate and Office including rest area.



BUILDINGS AND INFRASTRUCTURE PROJECTS

VALUE ENGINEERING PROJECTS



NOORA HOTEL PROJECT-UMM GHUWAILINA-DOHA-QATAR

ROYAL RESIDENTIAL APARTMENTS
(2B + G + M + 7 TYPICAL + STAIR-CASE)

The Project Brief:

Diar Consultant was invited to make a value engineering for Nora Hotel

Diar Has Prepared a report to make evaluation for the MEP engineering to apply the following concept:

- Review the main concept for MEP Package (after review found that there is no generator feed this building for emergency loads ...etc.)
- Meet the Client requirement with minimum cost.

After Review the MEP Package we found fetal mistakes in design as per next sections

- Electrical.
- HVAC Systems
- Drainage System.
- fire protection system.
- Water Supply.

This report we hve prepared was an added value to notify the client with the correction way to apply the right concept for MEP packages (add generator for emergency loads...etc.) and reduce the modification cost during construction.

Client:
Sheikha Noora Jasim M. J Al Thani
Locaion:
Umm Ghuwailina ,Doha ,Qatar



PARK INN HOTEL SALALAH, OMAN

VALUE ENGINEERING AND CONSTRUCTION SUPERVISION

Project Brief:

The project is endeavored to perform the Value engineering and Construction supervision for the hotel apartments including MEP Value engineering packages in the building and site layout.

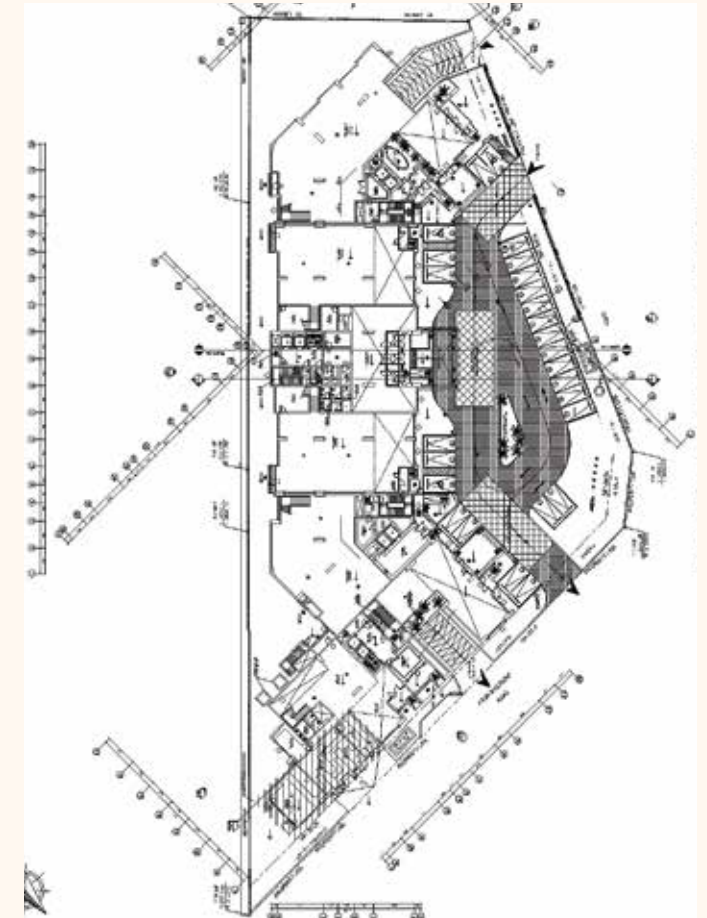
The client intends to construct the hotel apartments in Salah, Oman. Project tender package was received, which is show the project details.

Deliverables:

- All design packages in CAD format.
- All available calculation sheets

The building consists of Basement floor,
Ground floor,
Nine typical floors
and Roof.
The project built-up area will be 24,000 sq.m.

Client:
Park Inn Hotel Apartments
Locaion:
Salalah, Oman



BUILDINGS AND INFRASTRUCTURE PROJECTS



NEAMA TOWN RESORT

RABWAR NAAMA, SHARM EL SHIEKH

The Project Brief:

is located in Neama Bay, The beating heart of Sharm El Sheikh, in Rabwat Neama (Neama Hill) & elevated 100 meters above sea level, with a spectacu-

Scope of work:

Diar defined the scope of the telecommunication infrastructure works for Promo Sharm project and to establish the design criteria for the final design. It includes estimates for telephone lines and exchanges capacities.

Design work of the project will include the following:

- Provisional Space for exchange buildings according to Egypt Telecom company (ETC) requirements.
- Engineering forecast of telephone lines demand and estimating capacity of each Exchange.
- Distribution network according the selected alternative solution, including primary and secondary cable networks, fiber optic network (as applicable), as well as network distribution components (cross connect cabinets, distribution points, etc).
- Builder's work for the network including trenches, duct banks, manholes and hand holes.

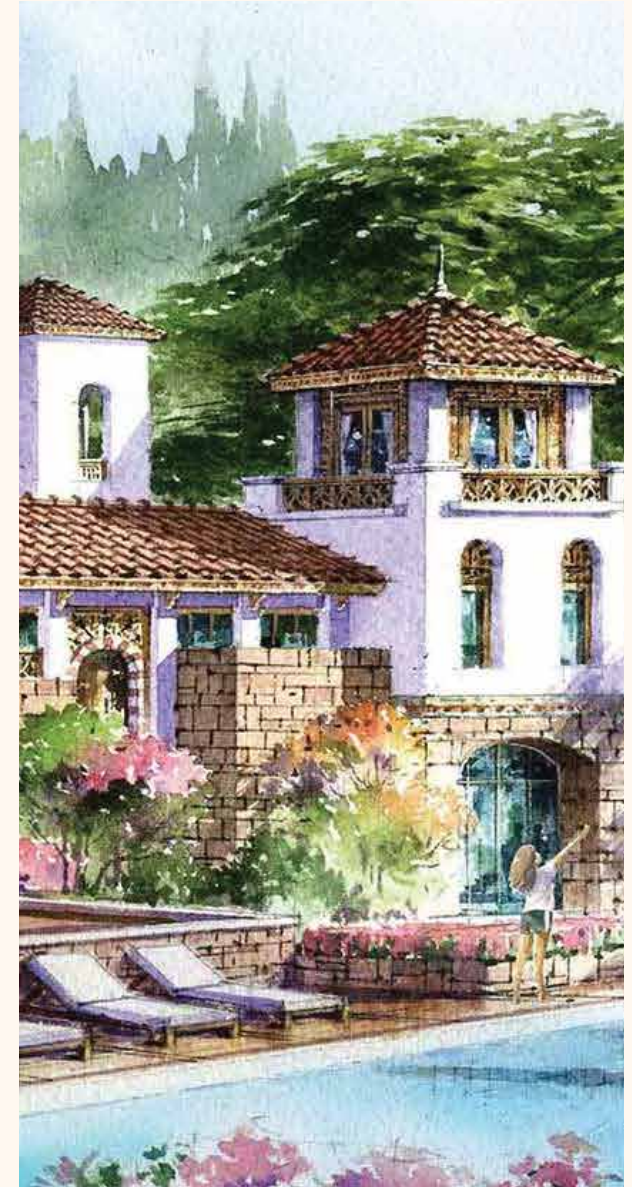
Offers the latest integrated real estate development project, incorporating top quality design landscape, highest level of service, professional state of the art techniques offering residential, commercial areas as well as a fully integrated residential area including studios, one and two bedrooms apartments and duplexes.

Client:

Promo Sharm - Real Estate Development

Location:

Ibn Sina Rd, Sharm Al Shiekh



BUILDINGS AND INFRASTRUCTURE PROJECTS



Project Brief:

Diar is the main Consultant of Al Mehwar Hospital that provided consulting Design and Engineering services for the whole project and construction supervision. Our team worked tirelessly to ensure that the hospital was designed and built to the highest standards to match the local and international codes, with a focus on safety, efficiency, and sustainability.

Al Mehwar Hospital located in 6 of October Cairo Egypt on a built-up area 28000 m2 consist of Basement + Ground + 5 floors

Scope of Work:

- Design Architecture Package as per Construction Requirements.
- MEP Design package
- Tender Evaluation.
- Construction Supervision
- Procurement Support

Client:

Al Mehwar

Locaion:

6 of October Cairo Egypt



Project Brief:

Dr.wael, Consultant of Obstetric and Gynecology one of the most distinguished Egyptian doctors in the field of Obstetrics and Gynecology. intends to establish a medical center Located in Maadi, Cairo Egypt .

Scope of Work:

- Preparation of drawings and documents required for the extraction of construction license.
- Structure Design Package
- MEP Design Package.
- Architecture Design Package as per construction.
- Basic and detailed engineering of the firefighting System

Client:

Dr. Wael El Banna

Locaion:

Maadi, Cairo Egypt .



BUILDINGS AND INFRASTRUCTURE PROJECTS



Project Brief:

Andalusia group is launching Andalusia Jeddah New Hospital (New Heart of Jeddah) in 2023, The most modern smart hospital in Saudi Arabia - Jeddah and which presents a new concept of health-care, healing and wellness.
size: 5000 sqft - 10,000 sqft

Scope of Work:

Diar Consulting Group successfully completed the re-design of the architectural, medical, and structural planning, MEP (Mechanical, Electrical, and Plumbing), and prepared the tender package for the Andalusia smart hospital in Jeddah. This remarkable achievement was accomplished within a record time of just 3 months.

Client:

Andalusia Group

Location:

Jeddah, Saudi Arabia

Project Brief:

Dr. Sulaiman AL-Habib Hospital in AL Khobar is the first fully integrated digital health project with Digital Hospital system in the region, with the capacity of 400 beds and 290 clinics on 290.000 m2.

DR. SULAIMAN AL HABIB - HOSPITAL



Scope of Work:

- Diar scope of work is to Redesign and shop drawings for all MEP systems.
- The most challenge for this project that the client request to submit the shop drawings for the whole project in just 4 months including the composite plans.

Client:

Dr. Suliman El Habib Medical Group

Location:

Al Khobar, Saudi Arabia

Project Brief:

Andalusia is developing its premises on the 6th. Of October City intends to make it a Prevailing treating/ healing facility and technology in the market with a Built Up- Area of 47,000 m2 and a capacity of 291 Beds and 100 Clinics. (electricity, Super -heated steam, Absorption refrigerator) using only one source (NG)

Scope of Work:

Mechanical:

- Update Mechanical Design Calculations
- Update Design brief.
- Stormwater.
- Gas System, if required.
- Water Supply Layouts & Details
- Bathrooms/Kitchens plans
- Fire Fighting Layouts & Details
- HVAC Layouts & Details

ANDALUSIA 6TH OCTOBER HOSPITAL



Client:

Andalusia Group

Location:

6th October, Egypt

BUILDINGS AND INFRASTRUCTURE PROJECTS



**ALKHOBAR
GARDEN- KSA (LANDSCAPE)**

Project Brief:

VADO has invited Diar Consulting Group to produce a landscape package and arch plans for Al Khobar Garden

Scope of Work:

DProject scope of work in details, which includes as the following:

- Produce a landscape package and arch plans for Al Khobar Garden.
- Infrastructure for MEP design for the landscape: (Irrigation networks, landscape lighting).
- Electrical substation, irrigation station, water supply substation.

Client:

VADO

Locaion:

Al Khobar, KSA



**VILLA MR/AHMED
NABIL (BAHRAIN) - RESIDENTIAL
LUXURY VILLA**



DIAR AL MUHARRAQ

Scope of Work:

- Architecture Design Package as per Construction requirements
- Architecture Shop drawings

Client:

Dr. Ahmed Nabil

Locaion:

Bahrain

Project Brief:

The Galala Hotel is located within the Galala Plateau project, the second largest national project approved by President Abdel Fattah El-Sisi in 2014

The coastal hotel, which was designed and implemented according to the latest engineering methods and architectural designs to be a masterpiece and a distinctive sign of the project, consists of 257 rooms, 34 suites

Scope of Work:

MEP Package Redesign and shop drawing Diar was responsible for the design, installation, and maintenance of the mechanical, electrical, and plumbing systems in a building. These systems are essential to the safety and comfort of the occupants and must be properly designed and installed to function properly. including Electrical, Low Current System

Client:

Governmental National Project

Locaion:

Al Ain El Sokhna, Egypt



**AL GALALA HOTEL
GALALA MOUNTAIN RESORT**

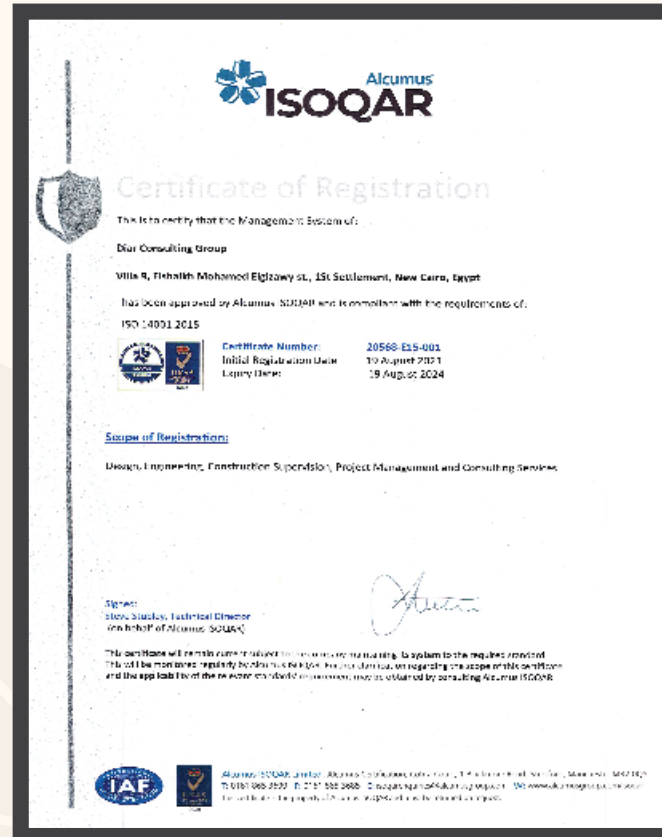
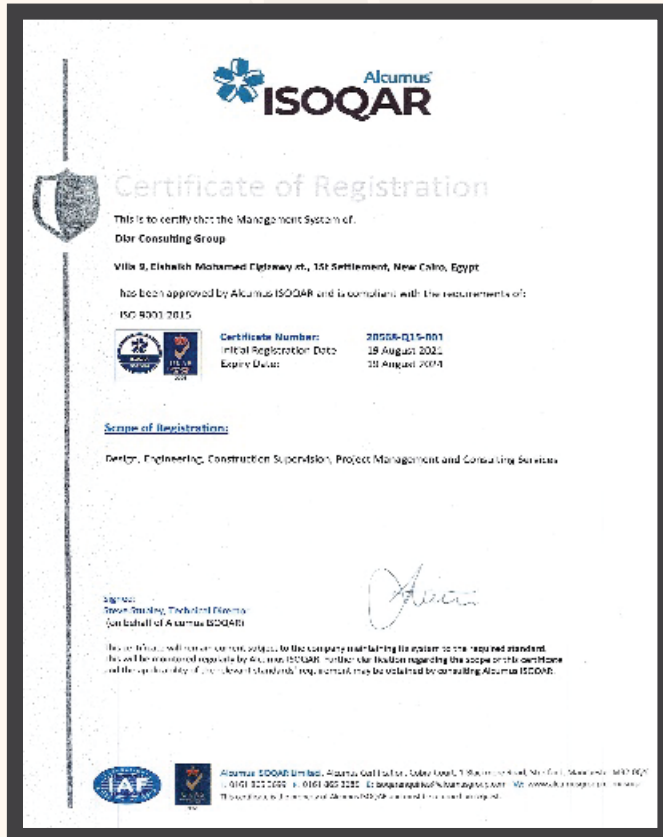


DIAR CERTIFICATIONS

OUR CERTIFICATIONS

Out of international / national interest of the quality, environment and occupational health & safety and in line with Egypt's vision 2030 for achieving sustainable development and the company interest with the customers satisfaction and continual improvement, Diar has the leadership in obtaining certificates of international standards for:

- Quality Management Systems (ISO 9001)
- Environmental Management Systems (ISO 14001)
- Occupational Health & Safety Management Systems (ISO 45001)



CLIENTS APPRECIATION



These certifications and Clients Appreciations demonstrate our commitment to excellence and expertise in various engineering disciplines, and showcase our ability to deliver high-quality and reliable engineering services to our clients.



SUCCESS PARTNERS

Since our foundation, Diar has established successful business relationships with many international business partners, completing projects of massive scales and following through on its commitment to safety, value creation, optimized solutions and responsiveness. Diar's clients expand across the entire globe with landmark projects.

SUCCESS PARTNERS

OUR OFFICES MAP

Diar has successfully completed hundreds of projects all around the world, We operate throughout the surrounding region using the combined resources to serve public and private clients in the infrastructure, buildings and Oil & Gas sectors..



Algeria



Cairo
(Head Office)



KSA



Bahrain



UAE



Oman



Singapore



South Africa



EGY Add.
Villa 9, El Shaikh Mohamed El Gizawy
street Zone 9 - 1st Settlement,
New Cairo - Cairo, Egypt

UAE Add.
RAKEZ free zone, RAK, UAE



Visit Our Website



☎ MOB: 0 106 642 4403


📞 TEL. / FAX: +2 2345 4411


✉ Info.diar@diargroup.com

🌐 www.diargroup.net

 facebook.com/ConsultingDiar

 [Diar Consulting Group](#)

 [Diar group](#)

 instagram.com/diarconsultinggroup/

 twitter.com/diarconsulting

Thank You